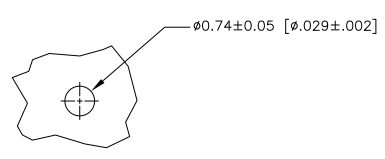
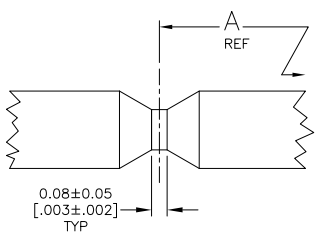
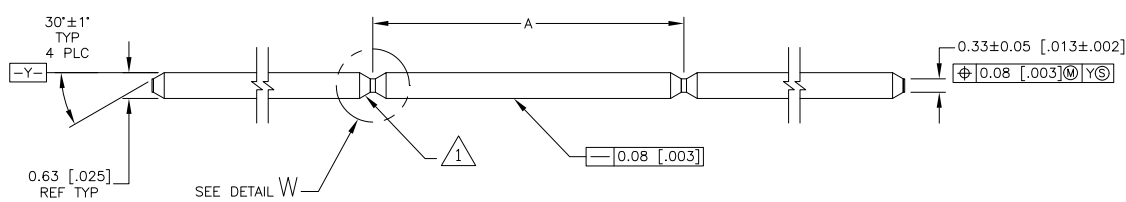


THIS DRAWING IS UNPUBLISHED. RELEASED FOR PUBLICATION
 BY TYCO ELECTRONICS CORPORATION. ALL RIGHTS RESERVED.

LOC	DIST	REVISIONS			
P	LR	DESCRIPTION	DATE	BY	APP'D
B		ECO-07-021031	11SEP07	MB	JG
B1		REVISED PER ECO-09-020689	22AUG09	KK	AEG



RECOMMENDED PC BOARD
TIN-PLATED HOLE SIZE

- 1 THE NOTCHED EDGES AND POST TIPS WILL NOT BE PLATED.
- 2 0.00038 [.000015] GOLD OVER 0.00127 [.000050] NICKEL.
- 3 MATERIAL: COPPER ALLOY.
- 4 OBSOLETE PARTS: OBSOLETE CIS STREAMLINING PER D.RENAUD/D.SINISI

Ø	INCHES	PART NUMBER
25.40	[1.000]	6-147334-1
25.15	[.990]	6-147334-0
24.89	[.980]	5-147334-9
24.64	[.970]	5-147334-8
24.38	[.960]	5-147334-7
24.13	[.950]	5-147334-6
23.88	[.940]	5-147334-5
23.63	[.930]	5-147334-4
23.37	[.920]	5-147334-3
23.11	[.910]	5-147334-2
22.86	[.900]	5-147334-1
22.61	[.890]	5-147334-0
22.35	[.880]	4-147334-9
22.10	[.870]	4-147334-8
21.84	[.860]	4-147334-7
21.59	[.850]	4-147334-6
21.34	[.840]	4-147334-5
21.08	[.830]	4-147334-4
20.83	[.820]	4-147334-3
20.57	[.810]	4-147334-2
20.32	[.800]	4-147334-1
20.07	[.790]	4-147334-0
19.81	[.780]	3-147334-9
19.56	[.770]	3-147334-8
19.30	[.760]	3-147334-7
19.05	[.750]	3-147334-6
18.80	[.740]	3-147334-5
18.54	[.730]	3-147334-4
18.29	[.720]	3-147334-3
18.03	[.710]	3-147334-2
17.78	[.700]	3-147334-1
17.53	[.690]	3-147334-0
17.27	[.680]	2-147334-9
17.02	[.670]	2-147334-8
16.76	[.660]	2-147334-7
16.51	[.650]	2-147334-6
16.26	[.640]	2-147334-5
16.00	[.630]	2-147334-4
15.75	[.620]	2-147334-3
15.49	[.610]	2-147334-2
15.24	[.600]	2-147334-1
14.99	[.590]	2-147334-0
14.73	[.580]	1-147334-9
14.48	[.570]	1-147334-8
14.22	[.560]	1-147334-7
13.97	[.550]	1-147334-6
13.72	[.540]	1-147334-5
13.46	[.530]	1-147334-4
13.21	[.520]	1-147334-3
12.95	[.510]	1-147334-2
12.70	[.500]	1-147334-1
12.45	[.490]	1-147334-0
12.19	[.480]	147334-9
11.94	[.470]	147334-8
11.68	[.460]	147334-7
11.43	[.450]	147334-6
11.18	[.440]	147334-5
10.92	[.430]	147334-4
10.67	[.420]	147334-3
10.41	[.410]	147334-2
10.16	[.400]	147334-1

THIS DRAWING IS A CONTROLLED DOCUMENT. **BY: B. HAYMAKER** **DATE: 08/09/09**

CHK: J. GESFORD **DATE: 08/09/09**

APP'D: J. GESFORD **DATE: 08/09/09**

PRODUCT SPEC: 0.64 [.025] SQ CONTINUOUS POST

APPLICATION SPEC: 114-13011

SIZE: A2 **CAGE CODE: 00779** **DRAWING NO: C=147334**

WEIGHT: -- **RESTRICTED TO: --**

MATERIAL: 3 **FINISH: 2**

CUSTOMER DRAWING **SCALE: 15:1** **SHEET: 1 of 1** **REV: B1**