

4

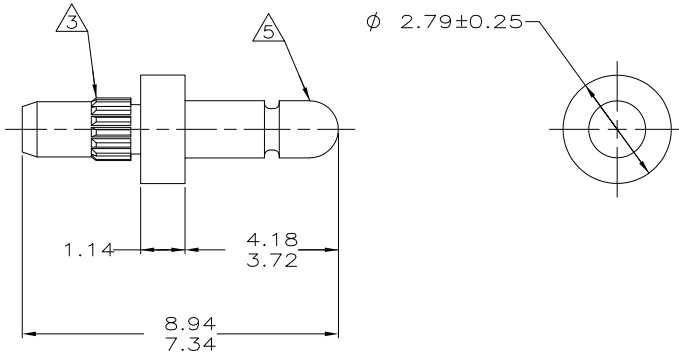
3

2

1

THIS DRAWING IS UNPUBLISHED. RELEASED FOR PUBLICATION  
 © COPYRIGHT - By - ALL RIGHTS RESERVED.

| LOC | DIST | REVISIONS   |                           |         |        |
|-----|------|-------------|---------------------------|---------|--------|
| P   | LTR  | DESCRIPTION | DATE                      | DWN     | APVD   |
| CM  | 00   | S1          | REVISED PER ECO-11-004820 | 11MAR11 | RK HMR |



- △ 0.00381 MIN BRIGHT TIN-LEAD PLATING ALL OVER.
- △ 0.00076 MIN GOLD PLATING ALL OVER.
- △ REED STRAIGHT TOOTH KNURL CS 80-80 T.P.I., 125 TEETH, 70° INCLUDED ANGLE. FITS 1.50 - 1.57 DIAMETER HOLE IN A 1.59 PRINTED CIRCUIT BOARD.
- 4. PARTS TO COMPLY WITH AMP SOLDERABILITY SPECIFICATION 109-11-3.
- △ MATES WITH AMP PARTS 60354 AND 60598.
- △ 0.00381 MIN BRIGHT TIN PLATING ALL OVER.

| MM      | IN      |
|---------|---------|
| 8.94    | .352    |
| 7.34    | .289    |
| 4.18    | .165    |
| 3.72    | .146    |
| 2.79    | .110    |
| 1.59    | .063    |
| 1.57    | .062    |
| 1.50    | .059    |
| 1.47    | .058    |
| 1.14    | .045    |
| 0.25    | .010    |
| 0.13    | .005    |
| 0.00381 | .000150 |
| 0.00076 | .000030 |
| MM      | IN      |

|        |             |
|--------|-------------|
| △ 6    | 3-60599-1   |
| △ 5    | 60599-3     |
| △ 1    | 60599-1     |
| FINISH | PART NUMBER |



THIS DRAWING IS A CONTROLLED DOCUMENT.

|                   |   |                                  |  |                    |
|-------------------|---|----------------------------------|--|--------------------|
| DIMENSIONS:<br>mm | TOLERANCES UNLESS OTHERWISE SPECIFIED:<br>0 PLC ±<br>1 PLC ±<br>2 PLC ±0.13<br>3 PLC ±<br>4 PLC ±<br>ANGLES ± | DWN<br>S. CARPENTER<br>21AUG2003 | TE Connectivity                                  |                    |
|                   | FINISH<br>SEE TABLE   | CHK<br>J. ELLIS<br>21AUG2003     | PIN, .058 DIAMETER, BRASS, KNURLED, P.C. CONTACT |                    |
| MATERIAL<br>BRASS |   | APVD<br>J. ELLIS<br>21AUG2003    | NAME   | RESTRICTED TO      |
|                   |   | PRODUCT SPEC<br>108-1025         | SIZE<br>A3                                       | CAGE CODE<br>00779 |
|                   |   | APPLICATION SPEC<br>114-1008     | DRAWING NO<br>C-60599                            | SCALE<br>10:1      |
|                   |   | WEIGHT                           | SHEET<br>1 of 1                                  | REV<br>S1          |
|                   |   | CUSTOMER DRAWING                 |  |                    |