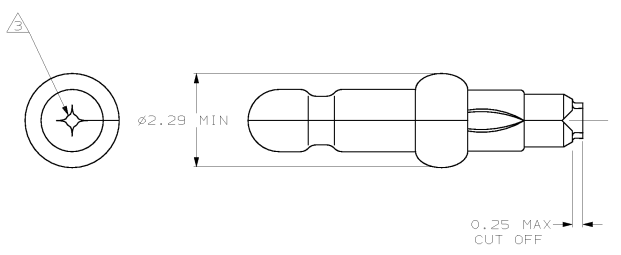


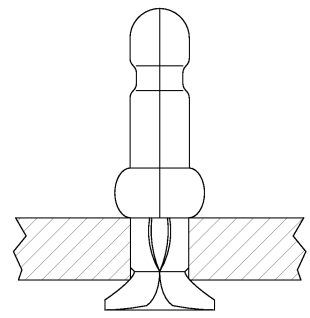
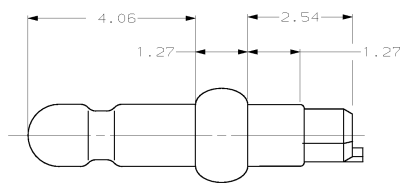
4 3 2 1

THIS DRAWING IS UNCLASSIFIED  
 (C) COPYRIGHT IS BY AMP INCORPORATED. ALL RIGHTS RESERVED.

REV. NO.		REV. DATE		DESCRIPTION		DATE	BY	APP'D
CM	52	U	REV & REDWN PER EC	DL30-0176-97	8-27-97	TB	RS	



- FITS 1.40 - 1.55 DIAMETER HOLE IN A 1.57 PRINTED CIRCUIT BOARD.
  - PARTS TO COMPLY WITH AMP SOLDERABILITY SPECIFICATION 109-11-3.
- △ 0.05 - 0.25 DIAMETER OPENING REQUIRED IN TIP OF PIN.



640394-1  
 PART NUMBER

MM	IN	MM	IN	MM	IN	MM	IN
0.25	.010	1.47	.058	2.29	.090	-	-
0.13	.005	1.40	.055	1.57	.062	4.06	.160
0.05	.002	1.27	.050	1.55	.061	2.54	.100

CONVERSION TABLE

**METRIC**

THIS DRAWING IS A CONTROLLED DOCUMENT		DWG. T. BECK 8-27-97 CHK. S. SWING 8-27-97 DES. J. BENDIS/CK 9-10-97 PROD. SPEC. 108-1025 APPLICATION SPEC. 114-1008 REVISIONS: - CUSTOMER DRAWING	<b>AMP</b> AMP Incorporated Harrisburg, PA 17105-3608 P/N: .058 DIAMETER, PHOSPHOR BRONZE, CLINCH FIT, LOOSE PIECE, P.C. CONTACT FILE: FILE CODE: DRAWING NO: A200779 640394 SCALE: 15:1 SHEET: 1 OF 1 REV: 11
DIMENSIONS: UNLESS OTHERWISE SPECIFIED: mm TOLERANCES: F. PLC ±.01 M. PLC ±.013 H. PLC ±.01 H. PLC ±.01	MATERIAL: 0.25 PH BRZ FINISH: PRE TIN	RESTRICTED TO: -	

AMP 1471-9 REV 27JAN96  
 27-AUG-97 14:44:41 amp22238 /home/amp22238/junk/redraw.sfp

640394  
 B

A