

4

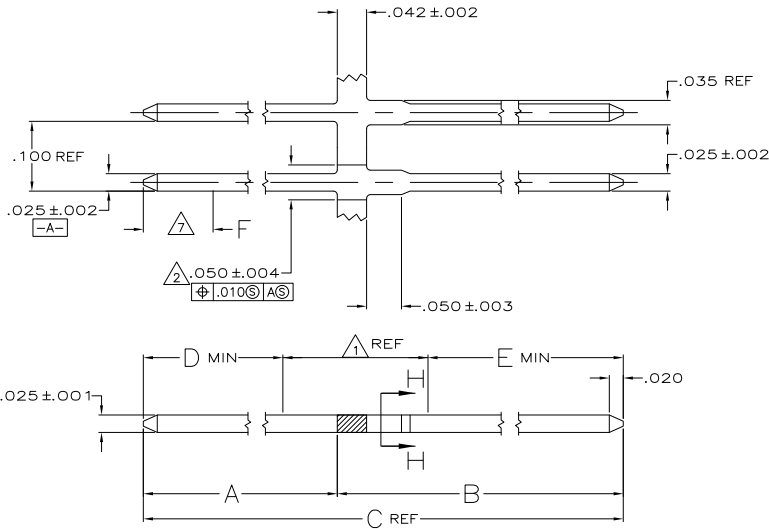
3

2

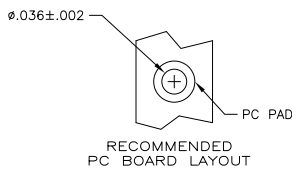
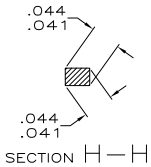
1

THIS DRAWING IS UNPUBLISHED. RELEASED FOR PUBLICATION. ALL RIGHTS RESERVED.

LOC	DIST	REVISIONS			
P	LTR	DESCRIPTION	DATE	MIN	APD
AD	31	F3	REVISED PER ECO-11-004917	11MAR11	RK HMR



- △ THE AREA BETWEEN D & E WILL BE PLATED WITH .000050 MIN NICKEL
- △ APPLICATOR CUT-OFF DIMENSION.
- △ .000030 MIN GOLD OVER .000050 MIN NICKEL
- △ .000100-.000200 MATTE TIN-LEAD OVER .000050 NICKEL.
- △ .000015 MIN GOLD OVER .000050 MIN NICKEL.
- △ .000050 MIN GOLD OVER .000050 MIN NICKEL.
- △ POINT OF MEASUREMENT FOR PLATING THICKNESS.
- △ .000100-.000200 MATTE TIN OVER .000050 NICKEL.
- △ ROHS 2002/95/EC COMPLIANT.
- △ OBSOLETE PARTS: OBSOLETE CIS STREAMLINING PER D.RENAUD/D.SINISI



SUPERSEDED BY 4-87022-1

△ 10	.100	△ 8	△ 6	.125	.200	.483	.165	.318	△ 5-87623-8
OBSOLETE	.100	△ 8	△ 6	.160	.200	.828	.550	.278	△ 5-87623-7
	.100	△ 8	△ 6	.220	.200	.628	.350	.278	△ 5-87623-6
	.100	△ 8	△ 6	.280	.200	.688	.410	.278	△ 5-87623-5
	.100	△ 8	△ 5	.125	.200	.443	.165	.278	△ 5-87623-4
△ 10	.100	△ 8	△ 5	.160	.200	.828	.550	.278	△ 5-87623-3
OBSOLETE	.100	△ 8	△ 5	.160	.200	1.016	.738	.278	△ 5-87623-2
	.100	△ 8	△ 3	.125	.200	.443	.165	.278	△ 5-87623-1
	.100	△ 4	△ 6	.125	.200	.483	.165	.318	87623-8
OBSOLETE	.100	△ 4	△ 6	.160	.200	.828	.550	.278	87623-7
OBSOLETE	.100	△ 4	△ 6	.220	.200	.628	.350	.278	87623-6
OBSOLETE	.100	△ 4	△ 6	.280	.200	.688	.410	.278	87623-5
	.100	△ 4	△ 5	.125	.200	.443	.165	.278	87623-4
OBSOLETE	.100	△ 4	△ 5	.160	.200	.828	.550	.278	87623-3
OBSOLETE	.100	△ 4	△ 5	.160	.200	1.016	.738	.278	87623-2
	.100	△ 4	△ 3	.125	.200	.443	.165	.278	87623-1
F	FINISH OVER AREA E	E	FINISH OVER AREA D	D	C	B	A	PART NUMBER	

THIS DRAWING IS A CONTROLLED DOCUMENT.

DIMENSIONS: INCHES 0 PLC ± .005 1 PLC ± .005 2 PLC ± .005 3 PLC ± .005 4 PLC ± .005 ANGLES ± .005	DIMENSIONS: MILLIMETERS 0 PLC ± .005 1 PLC ± .005 2 PLC ± .005 3 PLC ± .005 4 PLC ± .005 ANGLES ± .005	FINISH: SEE TABLE	MATERIAL: PHOS BRONZE	DWG: S. A. Shuey 11Dec08 OK: APPD: S. A. Shuey 11Dec08 PRODUCT SPEC: APPLICATION SPEC: WEIGHT:	NAME: POST, MOD II SIZE: A2 CASE CODE: 00779 DRAWING NO: C-87623 RESTRICTED TO: F3	TE Connectivity
------------------------------------------------------------------------------------------------------------------------	-----------------------------------------------------------------------------------------------------------------------------	----------------------	--------------------------	---------------------------------------------------------------------------------------------------------------	---------------------------------------------------------------------------------------------------	-----------------

CUSTOMER DRAWING SCALE: 10:1 SHEET: 1 of 1 REV: F3

87623

B

A