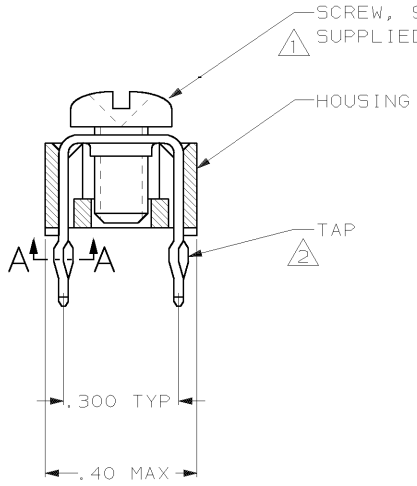
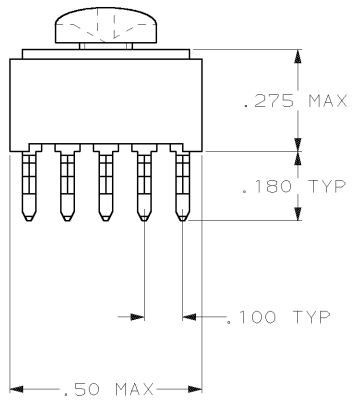


DRAWING MADE IN THIRD ANGLE PROJECTION

THIS DRAWING IS UNPUBLISHED. RELEASED FOR PUBLICATION, 19
 © COPYRIGHT 19 BY AMP INCORPORATED. ALL INTERNATIONAL RIGHTS RESERVED.

M		LOC	DIST	REVISIONS			
P	F	ZONE	LTR	DESCRIPTION	DATE	APPD	
		G		REV PER OUE0-0037-01	170CT01	JR	



⚠ TO PREVENT THREAD STRIPPING, SCREW TORQUE SHOULD NOT EXCEED 9 IN LBS.
 ⚠ TAP HOLE IS 6-32UNC-2B, TWO MIN THREADS.

.050±.005 DIA



SECTION A-A
 SCALE 10:1
 10 PLACES

SUPSD BY -2	YES	55673-2
	NO	55673-1
	SCREW	PART NO

DO NOT SCALE PRINT. UNLESS SPECIFIED DIMENSIONS IN INCHES TOLERANCES ON: 2. PLC DEC ± 3. PLC DEC ± .010 ANGLES ±	DR L. BRINER 4/1/97 CHK H. JAMSHIDIAN 4/1/97 APPD H. JAMSHIDIAN 4/1/97 H. JAMSHIDIAN 4/1/97	NAME AMP AMP INCORPORATED Harrisburg, Pa. 17105
MATERIAL HOUSING: NYLON TAP: COPPER ALLOY 725, .025 THICK	PRODUCT SPEC	TAP ASSEMBLY, POWER DISTRIBUTION
FINISH TAP: .000150 TIN-LEAD OVER .000050 NICKEL	APPLICATION SPEC	SIZE B FSCM NO 00779 DRAWING NO 55673
WEIGHT		SCALE 4:1 SHEET 1 OF 1

AMP 1470-15 REV 3-87
 17-JUN-97 13:27:12 amp23953 /home/ssr/v161a/dsk02/dp11322/amp23953.u.1773

CUSTOMER DRAWING