

4

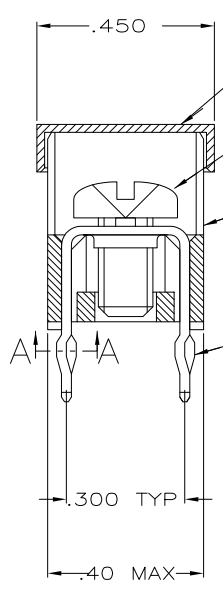
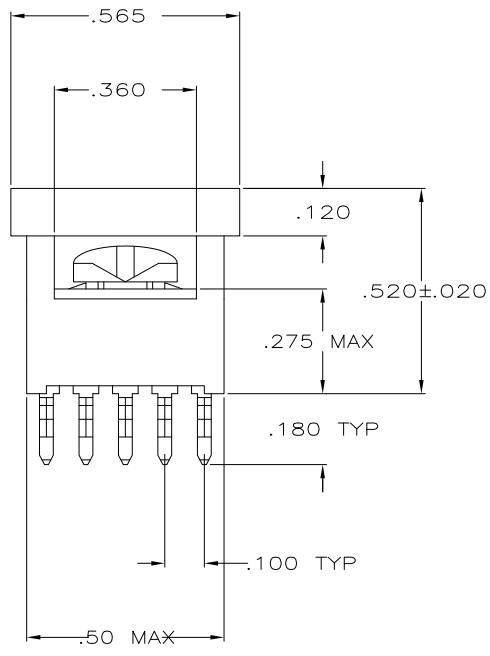
3

2

1

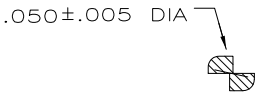
THIS DRAWING IS UNPUBLISHED. RELEASED FOR PUBLICATION
 © COPYRIGHT - BY TYCO ELECTRONICS CORPORATION. ALL INTERNATIONAL RIGHTS RESERVED.

LOC		DIST		REVISIONS				
P	LTR	DESCRIPTION			DATE	DWN	APVD	
GP	00	K1	REV PER ECO-10-011095			26MAY2010	RG	SM



- COVER
 - SCREW, 993879-1
SUPPLIED UNASSEMBLED, SEE TABLE
 - HOUSING
 - TAP
- ① TO PREVENT THREAD STRIPPING, SCREW TORQUE SHOULD NOT EXCEED 9 IN LBS.
 ② TAP HOLE IS 6-32UNC-2B, TWO MIN THREADS.
 ③ PACKAGED BULK.
 ④ PACKAGED INDIVIDUALLY.

OBSOLETE	④	YES	YES	55557-5
OBSOLETE	③	YES	YES	55557-4
OBSOLETE	③	YES	NO	55557-3
OBSOLETE	-	NO	YES	55557-2
OBSOLETE	-	NO	NO	55557-1
PACKAGING		HOUSING AND TAP ASSEMBLED	SCREW	PART NO.



SECTION A-A
 SCALE 10:1
 10 PLACES

THIS DRAWING IS A CONTROLLED DOCUMENT.

DIMENSIONS: INCHES	TOLERANCES UNLESS OTHERWISE SPECIFIED:	DWN J. McCLINTON 1/11/88	Tyco Electronics Corporation Harrisburg, PA 17105-3608	
0 PLC ± -	1 PLC ± -	CHK R. STONE 1/11/88	APVD M. GALLOWAY 1/15/88 NAME	
2 PLC ± -	3 PLC ± .010	APVD M. GALLOWAY 1/15/88	PRODUCT SPEC	
4 PLC ± -	ANGLES ± -	APPLICATION SPEC	TAP ASSEMBLY, POWER DISTRIBUTION	
MATERIAL: NYLON	FINISH: TAP: .000150 TIN-LEAD OVER .000050 NICKEL	WEIGHT -	SIZE A3	CAGE CODE 00779
TAP: COPPER ALLOY 725, .025 THICK		CUSTOMER DRAWING	DRAWING NO C-55557	RESTRICTED TO -
			SCALE 4:1	SHEET 1 OF 1
				REV K1