

4

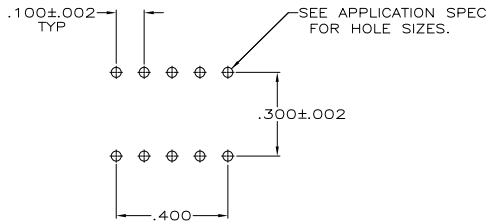
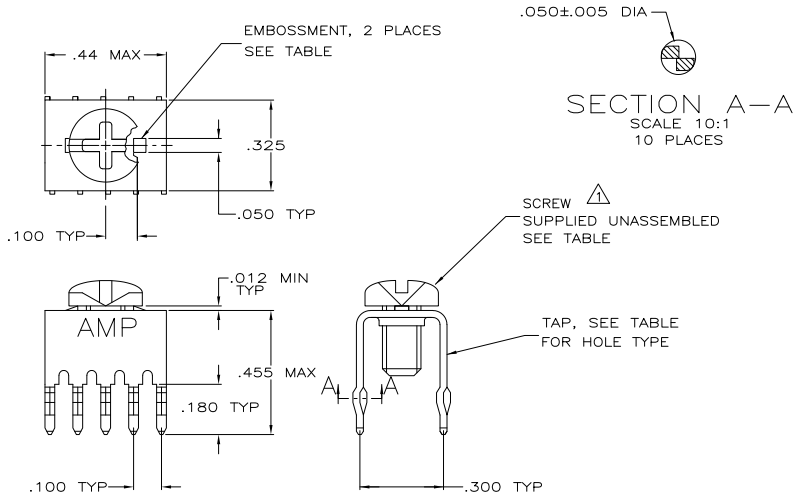
3

2

1

THIS DRAWING IS UNPUBLISHED. RELEASED FOR PUBLICATION. ALL RIGHTS RESERVED.

LOC		DIBT		REVISIONS			
P	LR	DESCRIPTION	DATE	BY	APPD		
GP	00						
	M1	REVISED PER ECO-11-004835	11MAR11	RK	HMR		



- 1 TO PREVENT THREAD STRIPPING, SCREW TORQUE SHOULD NOT EXCEED 9 IN LBS.
- 2 TAP HOLE IS 6-32UNC-2B, TWO MIN THREADS.
- 3 TAP HOLE IS M4 X 0.7, TWO MIN THREADS.
- 4 TAP: .000150 TIN-LEAD OVER .000050 NICKEL.
- 5 TAP: .000150 TIN OVER .000050 NICKEL.

FINISH	HOLE TYPE	SCREW	EMBOSSMENT	PART NUMBER
5	3	993879-1	YES	9-55558-1
5	3	NO	YES	9-55558-0
4	3	NO	YES	1-55558-1
4	3	993879-1	NO	55558-8
4	3	NO	NO	55558-7
4	3	993879-1	YES	55558-4
4	3	NO	YES	55558-3

SUPERSEDED BY -4

THIS DRAWING IS A CONTROLLED DOCUMENT.		BY J. McCLINTON 1-11-08	TE Connectivity	
DIMENSIONS: INCHES		CHK R. STONE 1-11-08	TAP, POWER DISTRIBUTION	
TOLERANCES UNLESS OTHERWISE SPECIFIED:		APPD M. GALLOWAY 1-11-08	RESTRICTED TO	
Ø PLC ± .008	PLC ± .008	APPLICATION SPEC 114-11000	SIZE A2	CAGE CODE 00779
Ø PLC ± .008	PLC ± .008	WEIGHT -	DRAWING NO C-55558	REV M1
MATERIAL COPPER ALLOY 72S	FINISH 4/5	CUSTOMER DRAWING	SCALE 4:1	SHEET 1 of 1

1471-9 (3/11)

55558

A