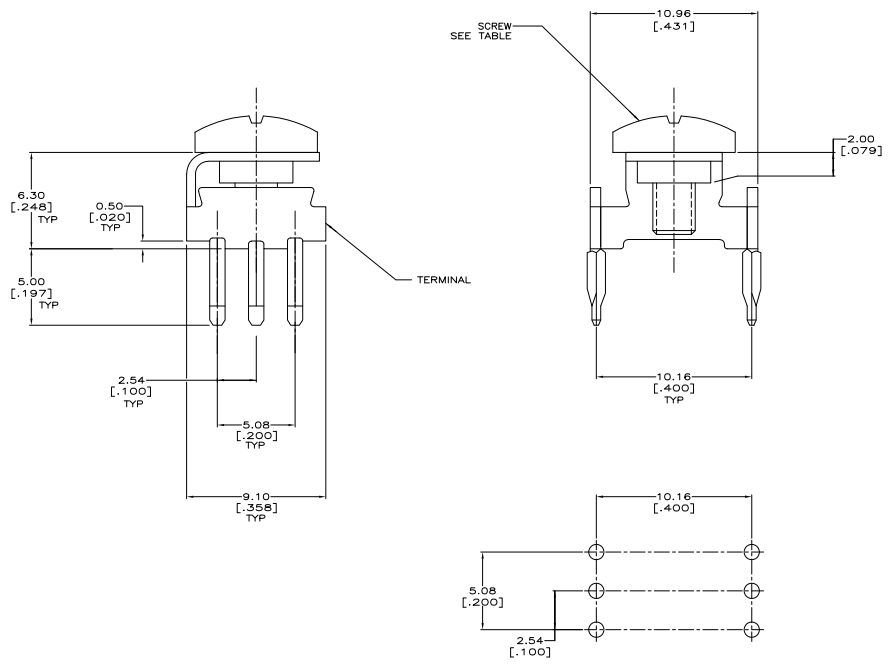


THIS DRAWING IS UNCLASSIFIED
 UNLESS INDICATED OTHERWISE
 BY THE ELECTRONICS CORPORATION
 ALL WORK RESERVED

REVISIONS			
REV	DATE	BY	APP
0			
A	REV PER EC 0512-0073-04		JA SF

- △ TERMINAL: PHOSPHOR BRONZE; SCREW: STAINLESS STEEL.
- △ TERMINAL: 2.54μm[.00100] MIN MATTE TIN OVER 1.25μm[.000050] MIN NICKEL.
- △ SCREW: PASSIVATED.



RECOMMENDED P.C. BOARD LAYOUT

PLATED THROUGH HOLE SPECIFICATION		THIS DRAWING IS A CONTROLLED DOCUMENT		M4 X 0.5 5213816-2	
DRILLED HOLE	1.6±0.025	BY ALCOBETA - 05-02	DATE	5213816-1	
Cu- THICKNESS	25-75 μm	BY FRANKLIN - 05-02			
Sn-THICKNESS	4-10 μm	BY FRANKLIN - 05-02			
FINISHED HOLE	1.39-1.54	BY FRANKLIN - 05-02			
FINISHED HOLE (AFTER REFLOW)	1.36-1.54	BY FRANKLIN - 05-02			

DATE	REV	BY	APP	DATE	REV	BY	APP

POWER TAP ASSY, 6 POSN	REVISED BY	DATE	REV	BY	APP