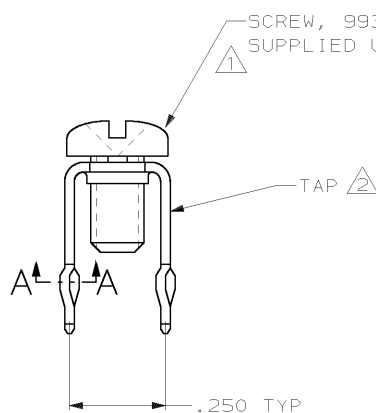
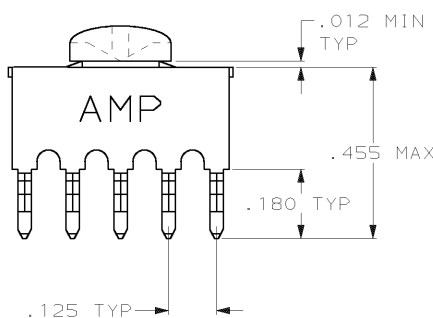
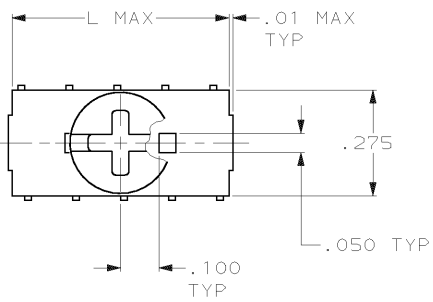


DRAWING MADE IN THIRD ANGLE PROJECTION

THIS DRAWING IS UNPUBLISHED. RELEASED FOR PUBLICATION, 19
 © COPYRIGHT 19 BY AMP INCORPORATED. ALL INTERNATIONAL RIGHTS RESERVED.

MOD	LOC	DIST	REVISIONS			
P	F	ZONE	LTR	DESCRIPTION	DATE	APPD
			M	REV PER OUE0-0037-01	170CT01	JR



SCREW, 993879-1
 SUPPLIED UNASSEMBLED, SEE TABLE

- 1 TO PREVENT THREAD STRIPPING, SCREW TORQUE SHOULD NOT EXCEED 9 IN LBS.
- 2 TAP HOLE IS 6-32UNC-2B, TWO MIN THREADS.
- 3 FINISH .000150 BRIGHT TIN-LEAD OVER .000050 NICKEL .

.57	YES	10	1-55323-0
.32	YES	6	55323-9
.57	NO	10	55323-6
.32	NO	6	55323-5
L	993879-1	NUMBER OF POSN	PART NO

.050±.005 DIA
SECTION A-A
 SCALE 10:1
 10 PLACES

DO NOT SCALE PRINT. UNLESS SPECIFIED DIMENSIONS IN INCHES TOLERANCES ON: 2. PLC DEC ± 3. PLC DEC ± .008 ANGLES ±	DR 1-11-88 J. MCCLINTON CHK 1-11-88 R. STONE APPD 1-15-88 M. GALLOWAY APPD 1-15-88 M. GALLOWAY PRODUCT SPEC	AMP AMP INCORPORATED Harrisburg, Pa. 17105	
MATERIAL COPPER ALLOY 725, .025 THICK	FINISH	NAME TAP, POWER DISTRIBUTION	
	APPLICATION SPEC	SIZE B	FSCM NO 00779
	WEIGHT	SCALE 4:1	DRAWING NO 55323
			SHEET 1 OF 1

AMP 1470-15 REV 3-87
 17-JUN-97 13:15:45 amp23963 /home/ssr/v161a/dsk02/dp11322/amp23963.u.1773

CUSTOMER DRAWING