

4

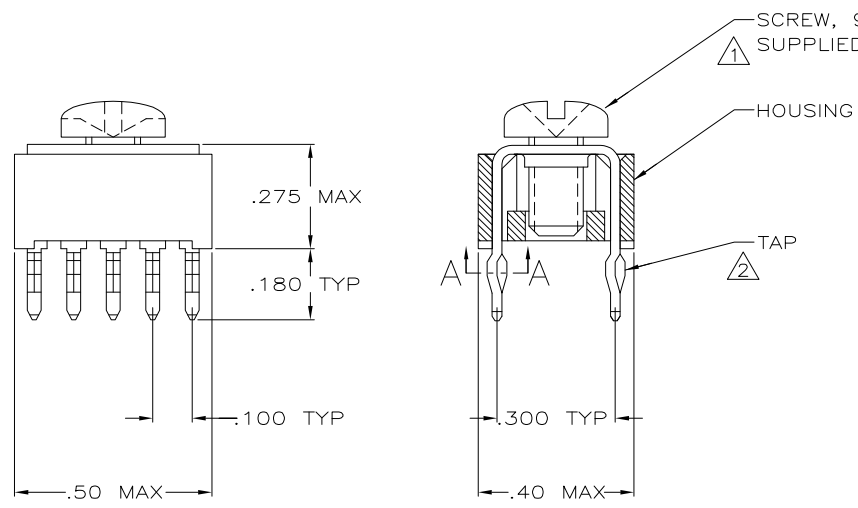
3

2

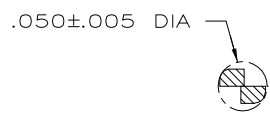
1

THIS DRAWING IS UNPUBLISHED. RELEASED FOR PUBLICATION
 © COPYRIGHT - BY TYCO ELECTRONICS CORPORATION. ALL RIGHTS RESERVED.

LOC	DIST	REVISIONS					
GP	00	P	LTR	DESCRIPTION	DATE	DWN	APVD
		A		REV PER EC 0S12-0573-04	05-04-05	JA	SF



- 1 TO PREVENT THREAD STRIPPING, SCREW TORQUE SHOULD NOT EXCEED 9 IN LBS.
- 2 TAP HOLE IS 6-32UNC-2B, TWO MIN THREADS.
- 3 HOUSING: NYLON.
- 4 TAP: COPPER ALLOY 725, .025 THICK.
- 5 TAP: .000150 MATTE TIN OVER .000050 NICKEL.
- 6. REFERENCE APPLICATION SPECIFICATION 114-11000 FOR DRILL HOLE SIZES AND FINISHES.



SECTION A-A
 SCALE 10:1
 10 PLACES

YES	5055673-2
SCREW	PART NO.

THIS DRAWING IS A CONTROLLED DOCUMENT.		OWN J. ALCORTA - DOCK5 05-04-05	Tyco Electronics Corporation Harrisburg, PA 17105-3608		
DIMENSIONS: INCHES		CHK A. FRANTUM 05-04-05			
TOLERANCES UNLESS OTHERWISE SPECIFIED:		APVD S. FLICKINGER 05-04-05	NAME TAP ASSEMBLY, POWER DISTRIBUTION		
0 PLC ± -		PRODUCT SPEC 108-11030	RESTRICTED TO		
1 PLC ± -		APPLICATION SPEC 114-11000	SIZE A3	CAGE CODE 00779	DRAWING NO C=5055673
2 PLC ± -		WEIGHT -	SCALE 4:1	SHEET 1	OF 1
3 PLC ± .010		MATERIAL 3 4	CUSTOMER DRAWING		
4 PLC ± -		FINISH 5	REV A		
5 ANGLES ± -					

AMP 1470-19 REV 31MAR2000