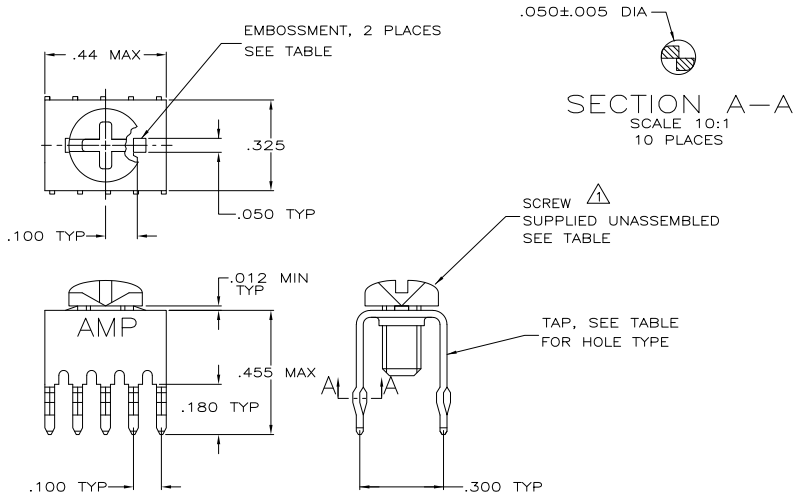


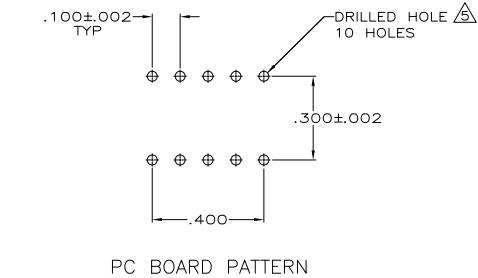
THIS DRAWING IS UNPUBLISHED. RELEASED FOR PUBLICATION. ALL RIGHTS RESERVED.

| LOC | | DIBT | | REVISIONS | | | |
|-----|-----|---------------------------|---------|-----------|------|--|--|
| P | LTR | DESCRIPTION | DATE | BY | APPD | | |
| AA | 00 | | | | | | |
| | C1 | REVISED PER ECO-11-004835 | 11MAR11 | RK | HMR | | |



SECTION A-A
SCALE 10:1
10 PLACES

- 1 TO PREVENT THREAD STRIPPING, SCREW TORQUE SHOULD NOT EXCEED 9 IN LBS.
- 2 TAP HOLE IS 6-32UNC-2B, TWO MIN THREADS.
- 3 TAP HOLE IS M4 X 0.7, TWO MIN THREADS.
- 4 TAP: .00020-.000120 MATTE TIN OVER .000050 NICKEL.
- 5 REFERENCE APPLICATION SPECIFICATION 114-11000 FOR DRILL HOLE SIZES AND FINISHES.



| FINISH | HOLE TYPE | SCREW | EMBOSSMENT | PART NUMBER |
|--------|-----------|----------|------------|-------------|
| 4 | 3 | NO | YES | 1-5055558-1 |
| 4 | 2 | NO | NO | 5055558-7 |
| 4 | 2 | 993879-1 | YES | 5055558-4 |
| 4 | 2 | NO | YES | 5055558-3 |

| | | | |
|--|--|-----------------------------|-------------------------|
| THIS DRAWING IS A CONTROLLED DOCUMENT. | | BY: J. ALCORTA 05-04-05 | TE Connectivity |
| DIMENSIONS: INCHES | | CHK: S. FRANTUM 05-04-05 | TE |
| MATERIAL: COPPER ALLOY 72S | | APP: S. FLICKINGER 05-04-05 | TE Connectivity |
| FINISH: 1 | | PRODUCT SPEC: 108-11030 | TAP, POWER DISTRIBUTION |
| APPLICATION SPEC: 114-11000 | | SIZE: A2 | CAGE CODE: 00779 |
| CUSTOMER DRAWING | | DRAWING NO: C-5055558 | RESTRICTED TO: - |
| SCALE: 4:1 | | SHEET: 1 of 1 | REV: C1 |