

4

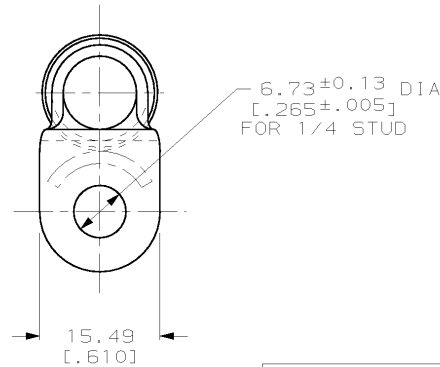
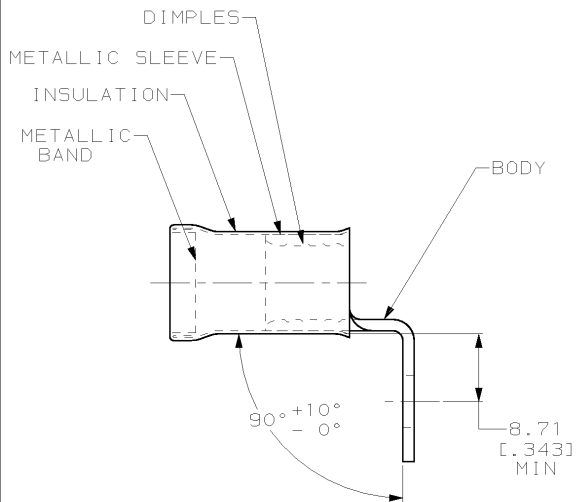
3

2

1

THIS DRAWING IS UNPUBLISHED. RELEASED FOR PUBLICATION .19
 © COPYRIGHT 19 BY AMP INCORPORATED. ALL RIGHTS RESERVED.

LOC	DIST	REVISIONS			
P	LTR	DESCRIPTION	DATE	DWN	APVD
G	14	B	REVISED PER 0L20-0178-97	31OCT97	DK5 CHK



- 1 MATERIAL THK: 1.45 ± 0.08 [0.057 ± 0.003]
- 2 WIRE INSULATION DIA: 12.83 [0.505] MAX

BODY: COPPER PER ASTM B-152
 TIN PL 0.00254 [0.000100] MIN THK
 PER ASTM B-545
INSULATION: PVC COLOR: RED
METALLIC SLEEVE: COPPER PER ASTM B-152
METALLIC BAND: STEEL PER ASTM A-109

52097

MATERIAL & FINISH

AMP
PART NUMBER

AMP INCORPORATED CUSTOMER SERVICE SYSTEMS

THIS DRAWING IS A CONTROLLED DOCUMENT.

DWN 31OCT97

CHK DK SCHRUM

APVD 03NOV97

M J SPICER

APVD 03NOV97

J L MECKLEY

PRODUCT SPEC

APPLICATION SPEC

WEIGHT -

CUSTOMER DRAWING

AMPAMP Incorporated
Harrisburg, PA 17105-3608NAME
TERMINAL, RING TONGUE,
BENT 90°, AMPLI-BOND™,
WIRE SIZE: 2 AWG

SIZE

CAGE CODE

DRAWING NO

A3100779

C-52097

RESTRICTED TO

FOR ADDITIONAL PRODUCT
INFORMATION OR COPIES
OF DRAWINGS AND
TECHNICAL DOCUMENTSPRODUCT INFORMATION CENTER
1-800-522-6752RECOMMENDED OPERATING TEMPERATURE:
105°C MAXVOLTAGE RATING:
NOT APPLICABLEFOR APPLICATION
TOOLING INFORMATIONTOOLING ASSISTANCE CENTER
1-800-722-1111WIRE CROSS SECTIONAL AREA RANGE:
26.7-42.4mm² [52,600-83,700] CIR MILS
SOLID OR STRANDED

FOR ORDER ENTRY

1-800-526-5142

MATERIAL

SEE TABLE

FINISH

SEE TABLE

DIMENSIONS:

mm [INCHES]

TOLERANCES UNLESS
OTHERWISE SPECIFIED:

0 PLC ±-

1 PLC ±-

2 PLC ±0.20 [0.008]

3 PLC ±-

4 PLC ±-

ANGLES ±-

AMP 1470-19 REV 11 JUN 97

31-OCT-97 13:54:00 amp26463 /ws/dept1123/dwg1123/u.ampLi-bond/u.2