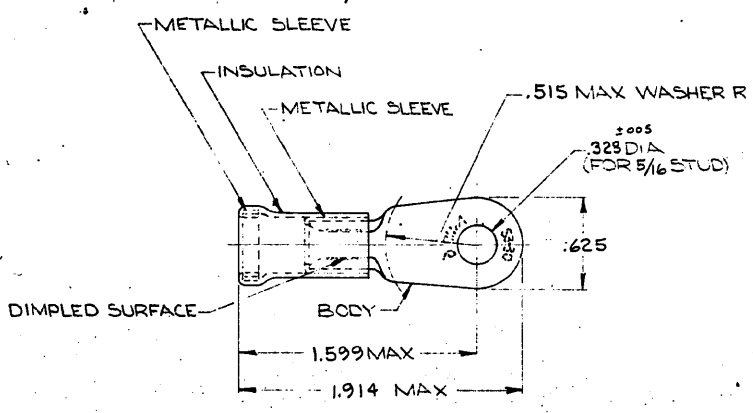


DRAWING MADE IN AMERICAN PROJECTION

© 1953 BY AMP INCORPORATED. ALL RIGHTS RESERVED. AMP PRODUCTS COVERED BY PATENTS AND/OR PATENTS PENDING.

REVISIONS			
ZONE	DATE	DESCRIPTION	APPROVED
C	1-5-70	REDRAWN & REVISED PER SPEC 574	Jme
D	8-17-70	ADDED 2-322006-2 NPS 68-0653 (REV)	Jme
E	3-15-70	REVISED REVISION D	FCY
F	6-7-73	INACTIVATED 2-322006-1 P-7054	Jme
G	7-10-70	REV PER ECN P-7000	Jme
H	3-1-82	OBSOLETE PER P-9222	JSM
J	5-6-80	REV G-4680	JT
K	10-25-88	OBS 2-2 PER G-2693	JT
L	4-6-93	REV/0720-0060-93	TO/ml



TONGUE MATERIAL THICKNESS = .045 ±.003  
FOR "A" MAX WIRE INS DIA

TABLE I

20	LOOSE PC, BOX	8-322006-5	BODY: COPPER (QQ-C-576)
WIRE TERMINAL		SEE TABLE II	FINISH: (SEE TABLE II)
			INSULATION: PVC COLOR: BLUE
			METALLIC SLEEVE: COPPER (QQ-C-576)
			METALLIC BAND: STEEL QQ-S-698 (ASTM A103)
			MATERIAL & FINISH
UNLESS OTHERWISE SPECIFIED DIMENSIONS ARE IN INCHES	CONTRACT NO.		<b>AMP</b> AMP INCORPORATED HARRISBURG, PENNSYLVANIA
TOLERANCES ON DECIMALS: ±.005	DR. J. Kaut 11-14-69		
ANGLES: ±5°	CHK. Jm E. 1-5-70		NAME: -WIRE TERMINAL AMPLI-BOND -RING TONGUE WIRE SIZE: 6
MATERIAL: SEE TABLE I	APPR. J. Kaut 1-7-70		
	REL. Jm E. 1-5-70		SIZE: B CODE IDENT NO. 00779 NUMBER 322006
	DSGN APPD		SCALE: NTS SHEET 1 OF 1
	OTHER APPD		

TABLE II

PART NO.	FINISH	"A"	PART NO. ON TYPE
8-322006-5	TIN PL (MIL-T-10727)	.377	
<del>2-322006-2</del>	TIN PL (MIL-T-10727)	.436	OBSOLETE
	GOLD PL. (MIL-G-45204) TYPE II .0005 MIN EXT THK OVER	.377	OBSOLETE
<del>2-322006-1</del>	NICKEL PL (QQ-N-290) .00003 MIN. EXT. THK.		
322006	TIN PL (MIL-T-10727)		2-322006-3