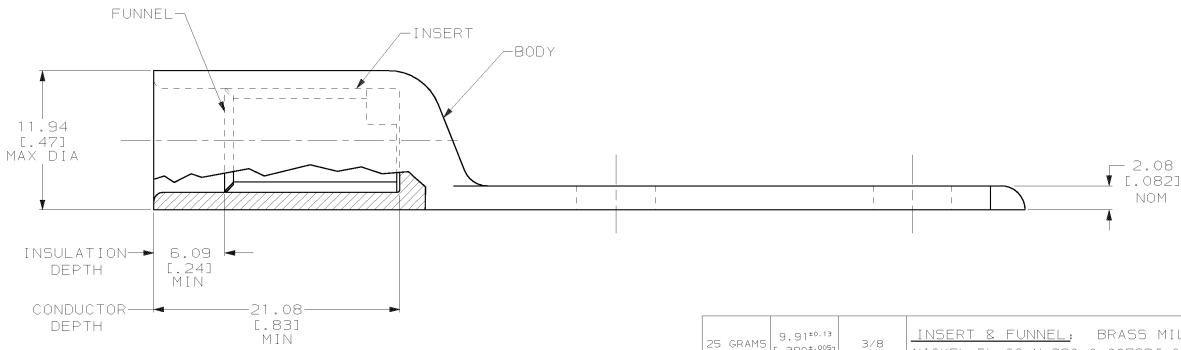
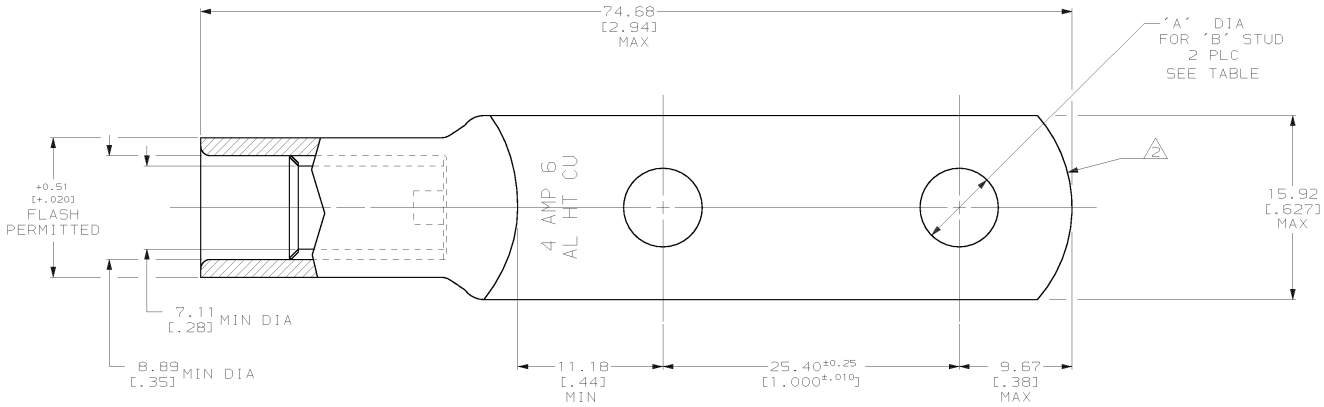


THIS DRAWING IS UNPUBLISHED. RELEASED FOR PUBLICATION 19
 © COPYRIGHT 19 BY AMP INCORPORATED. ALL INTERNATIONAL RIGHTS RESERVED.

LOC	DIST	P	F	ZONE	LTR	DESCRIPTION	DATE	APPO
G	86					REV PER 063A-0659-00	09NOV00	MS



1 WIRE INSULATION: 7.01[0.276] - 7.75[0.305] DIA
 THE TONGUE RADIUS FEATURE IS NOT A TOOLING CONTROLLED DIMENSION AND MAY NOT BE A TRUE RADIUS.

THIS DRAWING IS A CONTROLLED DOCUMENT FOR AMP INCORPORATED. IT IS SUBJECT TO CHANGE AND THE CONTROLLING ENGINEERING ORGANIZATION SHOULD BE CONTACTED FOR THE LATEST REVISION.

25 GRAMS	9.91 ^{+0.13} [0.390 ^{+0.009}]	3/8	INSERT & FUNNEL: BRASS MIL-C-50 NICKEL PL 00-N-290 0.00762[0.000300] AVG THK	55834-2
26 GRAMS	6.73 ^{+0.08} [0.265 ^{+0.009}]	1/4	BODY: COPPER ASTM-B187 ANNEALED SILVER PL 00-S-365 0.00508[0.000200] MIN THK	55834-1
WEIGHT	'A'	'B'	MATERIAL & FINISH	PART NO
DO NOT SCALE PRINT. UNLESS SPECIFIED DIMENSIONS IN MM (INCHES) TOLERANCES ON: 2 PLC DEC ± - 3 PLC DEC ± - ANGLES ± -	DR 6/15/92 DK SOHRUM	AMP Incorporated Harrisburg, PA 17105-3608 NAME WIRE TERMINAL, COPALUM™, SEALED, RING TONGUE, HIGH TEMP, WIRE SIZE: 21.75mm² [4] ALUMINUM 13.65mm² [6] COPPER		
MATERIAL	CHK 6/16/92 WJ VOCKROTH			
SEE TABLE	APPD 6/16/92 AJ KAUFMAN	PRODUCT SPEC 108-11011 TENTATIVE	SIZE	CAGE CODE
FINISH	APPLICATION SPEC 114-2134	SCALE	00779	DRAWING NO 55834
SEE TABLE	WEIGHT	SCALE	4:1	SHEET 1 OF 1

AMP 1471-6 REV 3-92
 20 JUL 1993 08:45:18 AMP26463 <U5128A>DEPT1123>DWG1123>U.COPALUM>U.RINGS

CUSTOMER DRAWING

55834

A