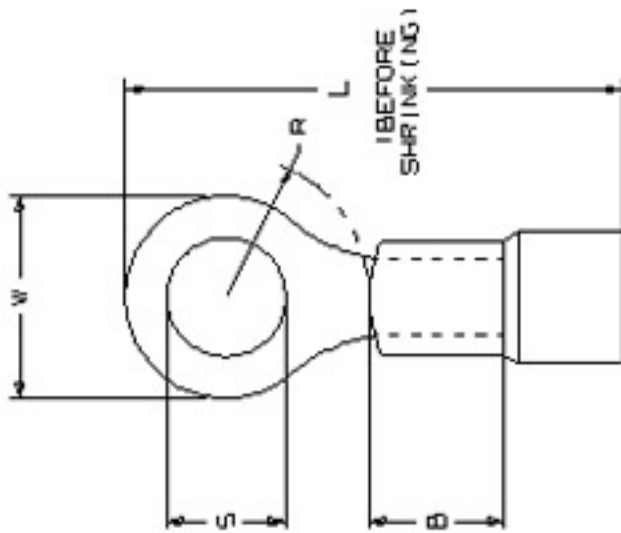


- NOTES: 1. UL LISTED AND CSA CERTIFIED AFTER HEAT SHRINKING FOR:
 A. 600 V, MAX. VOLTAGE RATING
 B. 257°F (125°C) MAX. TEMPERATURE RATING.
 2. MATERIAL: A. TERMINAL - TIN PLATED COPPER WITH BRAZED SEAM.
 B. INSULATOR - HEAT SHRINKABLE POLYOLEFIN WITH HOT MELT SEALANT.
 3. MINIMUM SHRINK TEMPERATURE: 300°F (150°C)
 4. ALL DIMENSIONS SHOWN ARE NOMINAL.
 5. INSTALLATION TOOL: CT-310.
 6. WIRE STRIP LENGTH: 5/16" (17.9mm)



LISTED
 1200
 ES2164



CERTIFIED
 73971

PANDUIT PART NUMBER	WIRE RANGE (AWG)	STUD SIZE S	DIMENSIONS		MAX WIRE (INSUL. DIA)	R MIN WASHER RADIUS	INSUL. COLOR	PKG QTY
			B ±.01" (S.25)	W ±.005" (S.13)				
PH18-6R	22-18	#6	.250 (6.35)	.25 (6.35)	1.05 (26.67)	.130 (3.30)	RED	25
PH18-8R	22-18	#8	.250 (6.35)	.31 (7.87)	1.08 (27.43)	.140 (3.56)	RED	25
PH18-10R	22-18	#10	.250 (6.35)	.31 (7.87)	1.08 (27.43)	.172 (4.37)	RED	25
PH18-14R	22-18	1/4"	.250 (6.35)	.47 (11.94)	1.24 (31.50)	.290 (7.37)	RED	25
PH14-6R	16-14	#6	.250 (6.35)	.31 (7.87)	1.05 (26.67)	.130 (3.30)	BLUE	25
PH14-8R	16-14	#8	.250 (6.35)	.31 (7.87)	1.03 (26.16)	.140 (3.56)	BLUE	25
PH14-10R	16-14	#10	.250 (6.35)	.32 (8.12)	1.05 (26.67)	.172 (4.37)	BLUE	25
NCPH14-10R	16-14	#10	.250 (6.35)	.32 (8.12)	1.05 (26.67)	.172 (4.37)	BLUE	500
PH14-14R	16-14	1/4"	.250 (6.35)	.46 (11.68)	1.24 (31.50)	.290 (7.37)	BLUE	25
PH14-56R	16-14	5/16"	.250 (6.35)	.46 (11.68)	1.24 (31.50)	.290 (7.37)	BLUE	25
PH14-38R	16-14	3/8"	.250 (6.35)	.53 (13.46)	1.24 (31.50)	.290 (7.37)	BLUE	25
PH10-6R	12-10	#8	.250 (6.35)	.37 (9.40)	1.22 (30.99)	.140 (3.56)	YELLOW	20
PH10-10R	12-10	#10	.250 (6.35)	.37 (9.40)	1.20 (30.48)	.172 (4.37)	YELLOW	20
NCPH10-10R	12-10	#10	.250 (6.35)	.37 (9.40)	1.20 (30.48)	.172 (4.37)	YELLOW	200
PH10-14R	12-10	1/4"	.250 (6.35)	.52 (13.21)	1.20 (30.48)	.290 (7.37)	YELLOW	20
NCPH10-14R	12-10	1/4"	.250 (6.35)	.52 (13.21)	1.20 (30.48)	.290 (7.37)	YELLOW	200
PH10-38R	12-10	3/8"	.250 (6.35)	.58 (14.99)	1.20 (30.48)	.290 (7.37)	YELLOW	20
PH10-12R	12-10	1/2"	.250 (6.35)	.72 (18.29)	1.54 (39.12)	.360 (9.14)	YELLOW	20



FINLEY PARK, ILLINOIS

REV	DATE	BY	CHK	DESCRIPTION	ECN #	PH	CUST	QTY	ORL	REV NO	A41456
05	07/07	SRB		Changed W and L dimensions for part numbers PH14-10R, NCPH14-10R, and L dimensions for part numbers PH10-14R, NCPH10-14R, PH10-38R							
04	6/07	BCT		ADDED TOLERANCES TO B & W DIMS. REVISED L DIM OF PH18-14R, PH14-56R & PH14-38R PER CUSTOMER REQUEST							
03	12/05	DAW		ADDED NCPH14-10R, NCPH10-10R, NCPH10-14R.	TR00055						
						TR0	CLN				

HEAT SHRINK INSULATED RING TERMINALS