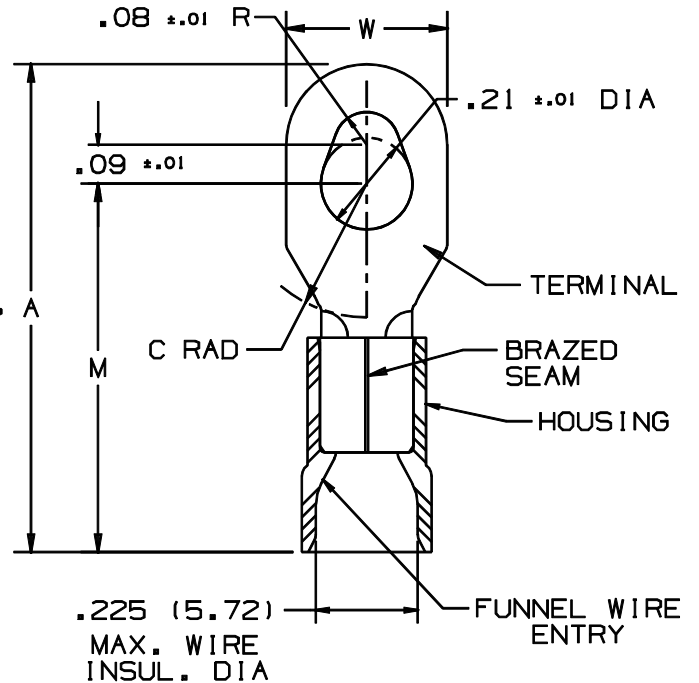


THIS COPY IS PROVIDED ON A RESTRICTED BASIS AND IS NOT TO BE USED IN ANY WAY DETRIMENTAL TO THE INTERESTS OF PANDUIT CORP.

PANDUIT PART NUMBER	STUD SIZE	DIMENSIONS in.			
		A $\pm .04$	W $\pm .01$	C $\pm .02$	M $\pm .04$
PV10-610R	#6, #8, #10	1.17 (29.7)	.37 (9.4)	.31 (7.9)	.89 (22.6)

NOTES:

- UL LISTED AND CSA CERTIFIED FOR:
    - 600V. MAX. BLDG WIRE (1000 V. MAX IN SIGNS, FIXTURES & LUMINAIRES), AND 14-10 AWG SOLID OR STRANDED COPPER WIRE, & 221°F (105°C MAX) TEMP RATING WITH THE CT-550, CT-1550, & CT-1551\* INSTALLATION TOOL.
    - 300 V. MAX BLDG WIRE, 12-10 AWG SOLID OR STRANDED COPPER WIRE, & 167°F (75°C ) MAX TEMP RATING WITH THE CT-100 & CT-250 INSTALLATION TOOLS.
  - MATERIAL:
    - STAMPING - .04" (1.02) THK COPPER, TIN PLATED
    - HOUSING - VINYL, YELLOW
  - STRIP LENGTH - 5/16  $\pm 1/32$  (7.9  $\pm .8$ )
  - PACKAGE QTY:
    - L=50
    - D=500
  - DIMENSIONS IN BRACKETS ARE IN MILLIMETERS
- \* USE ONLY #12 AWG SOL/STR OR #10 AWG STR COPPER WIRE WITH THE CT-1550 & CT-1551 INSTALLATION TOOLS.



A41588\_01

				<b>PANDUIT</b> CORP. TINLEY PARK, ILLINOIS							
01	1/01	RM		FILESPEC WAS N41588AA_PCD_00			PV10-610R, VINYL INSULATED MULTI-STUD TERMINAL				
00	3/96	ED		RELEASED	04187						
REV	DATE	BY	CHK	DESCRIPTION	ECN #	CUST	PM	DRAWN BY: EJD	CHK'D	SCALE: NONE	DRAWING NO.: A41588