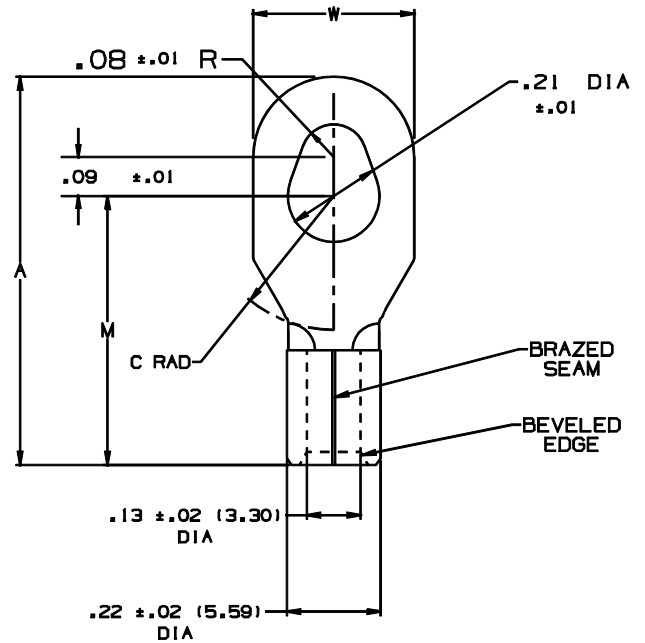


THIS COPY IS PROVIDED ON A RESTRICTED BASIS AND IS NOT TO BE USED IN ANY WAY DETRIMENTAL TO THE INTERESTS OF PANDUIT CORP.

| PANDUIT PART NUMBER | STUD SIZE   | DIMENSIONS in. |              |              |               |
|---------------------|-------------|----------------|--------------|--------------|---------------|
|                     |             | A $\pm .03$    | W $\pm .01$  | C $\pm .02$  | M $\pm .03$   |
| P10-610R            | #6, #8, #10 | .90<br>(22.9)  | .37<br>(9.4) | .31<br>(7.9) | .62<br>(15.8) |



NOTES:

- UL LISTED AND CSA CERTIFIED FOR:
  - #14-10 AWG SOLID OR STRANDED COPPER WIRE
  - 302° F (150° C) MAX. TEMP. RATING
- MATERIAL:
  - STAMPING - .04" (1.02) THK COPPER, TIN PLATED
- PACKAGE QTY: STD. PKG. -L=50  
BULK PKG. -D=500
- DIMENSIONS IN BRACKETS ARE IN MILLIMETERS
- INSTALLATION TOOLS:
  - UL LISTED AND CSA CERTIFIED: CT-100, CT-200, CT-570, CT-1570
  - PANDUIT APPROVED: CT-160, CT-260
- WIRE STRIP LENGTH: 9/32  $\pm 1/32$  (7.1  $\pm .8$ )



A41590\_01

|     |      |     |     |  |       |      |  |               |       |             |                     |
|-----|------|-----|-----|--|-------|------|--|---------------|-------|-------------|---------------------|
|     |      |     |     | <b>PANDUIT</b> CORP. TINLEY PARK, ILLINOIS |       |      |  |               |       |             |                     |
| 01  | 1/01 | KMD |     | FILE SPEC. WAS N41590AA_PCD_01             |       |      | P10-610R, NON-INSULATED<br>MULTI-STUD TERMINAL |               |       |             |                     |
| 00  | 3/96 | ED  |     | RELEASED                                   | 04178 |      |  |               |       |             |                     |
| REV | DATE | BY  | CHK | DESCRIPTION                                | ECN # | CUST | PM   | DRAWN BY: EJD | CHK'D | SCALE: NONE | DRAWING NO.: A41590 |