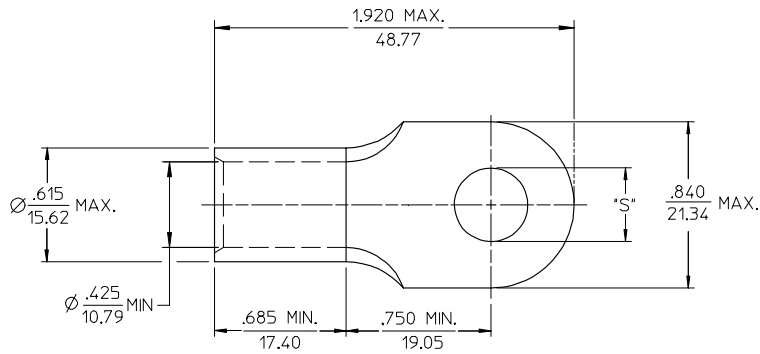


MATERIAL NO.	ENG. NO.	STUD SIZE	*.003 'S'	STOCK THICKNESS
191930330	H-381-14	1/4	.265	.075 (1.90)
191930333	H-381-56	5/16	.328	
191930331	H-381-38	3/8	.390	
191930556	H-381-12	1/2	.515	



SALES DRAWING

- NOTE(S):
 1. MATERIAL: COPPER
 2. PLATING: ELECTROPLATE TIN.
 3. ALL DIMENSIONS IN INCHES/(MM)
 4. WIRE SIZE: 1/0 AWG
 50 MM²

REVISED/UPDATE TO Mx STD EC NO: ETC2003-0315 DRAWN/RYRICK 2003/08/20 CHKD/HEB 2003/08/21 APPR/ROGROSS 2003/08/21	QUALITY SYMBOLS	GENERAL TOLERANCES (UNLESS SPECIFIED)	SCALE 2:1	DESIGN UNITS INCH	THIRD ANGLE PROJECTION	REVISE ON CAD ONLY
	DESCRIPTION	4 PLACES ± --- ± ---	mm INCH	DIMENSION STYLE IN/MM		TITLE
		3 PLACES ± --- ± .005		DRAWN BY DLM	DATE 03/06/13	RING TONGUE TERMINAL VERSAKRIMP SERIES 1/0 AWG
		2 PLACES ± 0.13 ± .01		CHECKED BY HEB	DATE 03/06/13	MOLLEX INCORPORATED
1 PLACE ± 0.25 ± ---		APPROVED BY RWD	DATE 03/06/13	MATERIAL NO. (SEE CHART)		
A	ANGULAR ±1/2°	DRAFT WHERE APPLICABLE MUST REMAIN WITHIN DIMENSIONS	DOCUMENT NO. SD-19193-020		SHEET NO. 1 OF 1	
THIS DRAWING CONTAINS INFORMATION THAT IS PROPRIETARY TO MOLEX INCORPORATED AND SHOULD NOT BE USED WITHOUT WRITTEN PERMISSION			B			