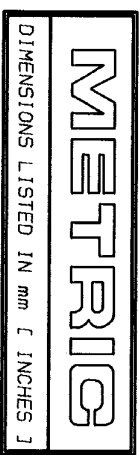
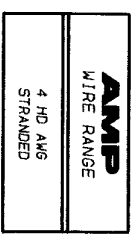
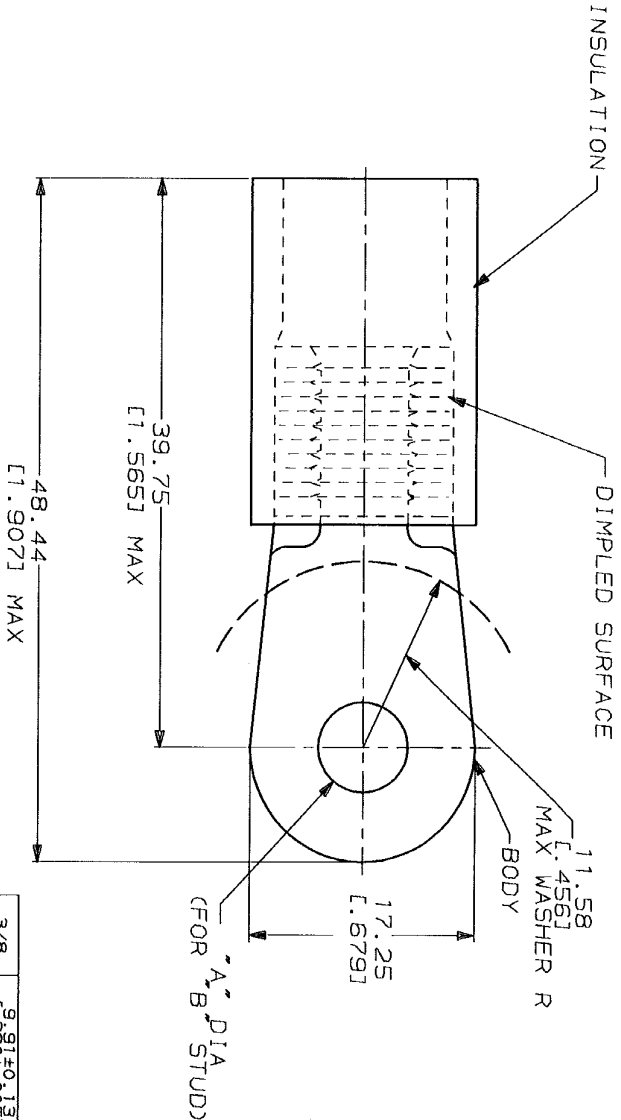


THIS DRAWING IS UNPUBLISHED. RELEASED FOR PUBLICATION BY AMP INCORPORATED. ALL INTERNATIONAL RIGHTS RESERVED. COPYRIGHT 1989

LOC	DIST	P	ZONE	LTR	REVISIONS	DATE	APPD
G	14	P	D	EC 0720-0279-93	DESCRIPTION	5-23-93	56 BB



1. TONGUE MATERIAL THK 2.31±0.08 [ 0.091±.004 ] FOR 11.25 [ 0.443 ] MAX WIRE INS DIA



AMP INCORPORATED CUSTOMER SERVICE SYSTEMS

FOR ADDITIONAL PRODUCT INFORMATION OR COPIES OF DRAWINGS AND TECHNICAL DOCUMENTS	1-800-522-6752	PRODUCT INFORMATION CENTER
FOR APPLICATION TOOLS AND TOOLS ASSISTANCE CENTER	1-800-722-1111	TOOLING ASSISTANCE CENTER
FOR ORDER ENTRY	1-800-526-5142	ORDER ENTRY CENTER

MAX RECOMMENDED OPERATING TEMPERATURE: 105°C	VOLTAGE RATING: -	CIRCULAR MIL AREA: 16.8-26.7mm² [33,100-52,600] STRANDED	FINISH: TIN PLATE PER MIL-T-10727	DR 6-21-83 S.I. GULLOEN	OR 6-21-83 R. HERGENY	APPD 6-21-83 B. BANE	NAME: AMP	SIZE: B	SCALE: NTS
DO NOT SCALE PRINT. TOLERANCES ON DIMENSIONS ARE: ANGLES ± .5°	3/8 9.91±0.13 [ 0.390±.005 ]	5/16 8.33±0.13 [ 0.328±.005 ]	DR 6-21-83 S.I. GULLOEN	OR 6-21-83 R. HERGENY	APPD 6-21-83 B. BANE	NAME: AMP	SIZE: B	SCALE: NTS	
DO NOT SCALE PRINT. TOLERANCES ON DIMENSIONS ARE: ANGLES ± .5°	3/8 9.91±0.13 [ 0.390±.005 ]	5/16 8.33±0.13 [ 0.328±.005 ]	DR 6-21-83 S.I. GULLOEN	OR 6-21-83 R. HERGENY	APPD 6-21-83 B. BANE	NAME: AMP	SIZE: B	SCALE: NTS	

AMP 1470-15 REV 3-82 23 JUN 1993 10:38:14 AMP1122 <WJ128A>DEPT1132>AMP1122U.CUSTOMINVL CUSTOMER DRAWING