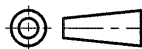


DO NOT SCALE
DIMENSIONS IN mm

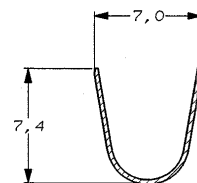
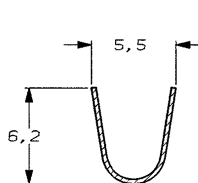
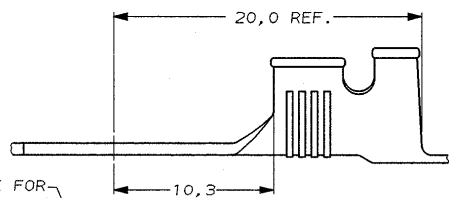
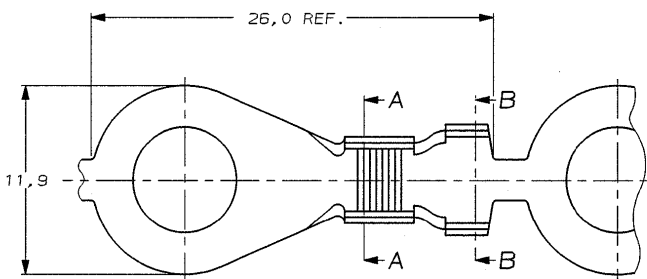
METRIC

THIRD ANGLE
PROJECTION



NOTES:

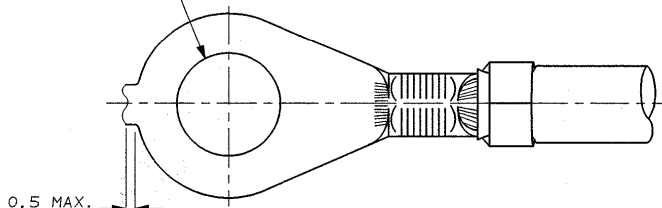
- △ FOR USE ON STANDARD AND MINIATURE APPLICATORS.
- △ FOR USE ON MINIATURE APPLICATORS. (AMP-0-MATOR APPLICATION)
- △ REELED WITH PAPER COVER.
- △ REELED WITH PAPER AND WITH PAPERCOVER
- △ OBSOLETE PARTS: OBSOLETE CIS STREAMLINING PER D.RENAUD/D.SINISI



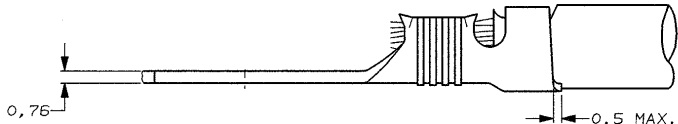
SECTION A-A

SECTION B-B

6,7 DIA. HOLE FOR STUD M6.



0,5 MAX.



0,5 MAX.

- △ OBSOLETE
- △ OBSOLETE
- △ OBSOLETE

NOTES	FINISH	MATERIAL	PARTNUMBER
△	TINPLATED	PHOSPHOR BRONZE	160181-7
△	UNPLATED	PHOSPHOR BRONZE	160181-6
△	UNPLATED	BRASS	160181-5
△	UNPLATED	BRASS	160181-4
△	UNPLATED	PHOSPHOR BRONZE	160181-3
△	TINPLATED	BRASS	160181-2
△	UNPLATED	BRASS	160181-1

NOTES	FINISH	MATERIAL	PARTNUMBER
-	-	-	-
-	-	-	-
-	-	-	-
-	-	-	-
-	-	-	-

C1	ECO-09-026346	KK	AEG	25NOV09
C	EH-0334-94	HVD	AB	20.06.94
B	H-9701	JvdH	AB	14-04-92

LTR.	REVISION RECORD	DR.	CHK.	DATE	
DR.	J.V.D.HEIJDEN	CHK.	A.BIJNEN	APP.	L.V.SOEST.
DATE:	20-04-83	DATE:	28-04-83	DATE:	26-04-83

NAME	DWG. No.	REV. LTR.	SHEET
AMP HOLLAND B.V. s-Hertogenbosch, The Netherlands.	C-160181	C1	1 OF 1

WIRE RANGE :
3,1-5,3 mm²
INSULATION RANGE :
3,8-5,3 DIA.