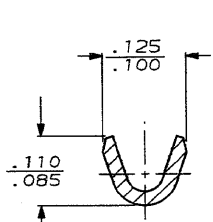
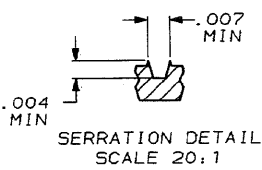
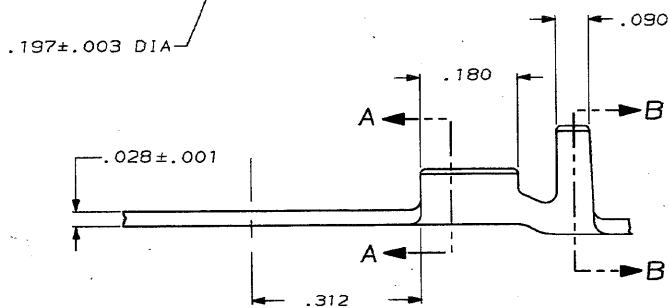
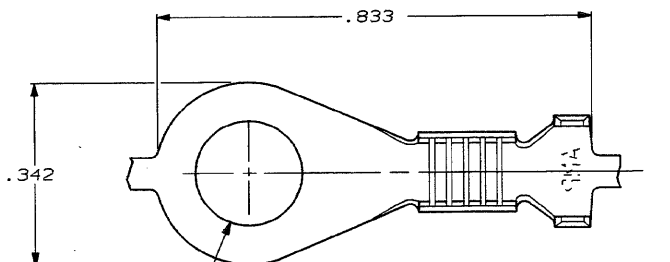


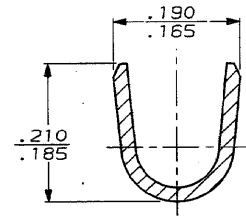
DRAWING MADE IN THIRD ANGLE PROJECTION

THIS DRAWING IS UNPUBLISHED. RELEASED FOR PUBLICATION .19
 © COPYRIGHT 19 BY AMP INCORPORATED, HARRISBURG, PA. ALL INTERNATIONAL RIGHTS RESERVED. AMP PRODUCTS MAY BE COVERED BY U.S. AND FOREIGN PATENTS AND/OR PATENTS PENDING.

LOC	DIST	P	F	ZONE	LTR	REVISIONS	DATE	APPROVED
AF	50					REV PER AF-4519	2/18/88	<i>[Signature]</i>



SECTION A-A
SCALE 8:1



SECTION B-B
SCALE 8:1

TIN PL	INSULATION RANGE	MAGNET WIRE SIZE	PART NO
.100-.140	23-19	60319-2	
.100-.140	23-19	60319-1	

UNLESS OTHERWISE SPECIFIED DIMENSIONS ARE IN INCHES TOLERANCES ON: 2 PL DEC ± .015 3 PL DEC ± .015 ANGLES ± .5	DR P FORTNEY 6/4/87	AMP AMP INCORPORATED Harrisburg, Pa. 17105	
	CHK G YETTER 1/6/88		
MATERIAL T1 BRASS	APPD RP FRANTZ 1/7/88	NAME RING, AMPLIVAR	
FINISH SEE TABLE	APPD TL SHUTTER 1/12/88	SIZE B	FSCM NO 00779
		SCALE 6:1	DRAWING NO 60319
			SHEET 1 OF 1

CUSTOMER DRAWING

AMP 1470-15 REV 10-84