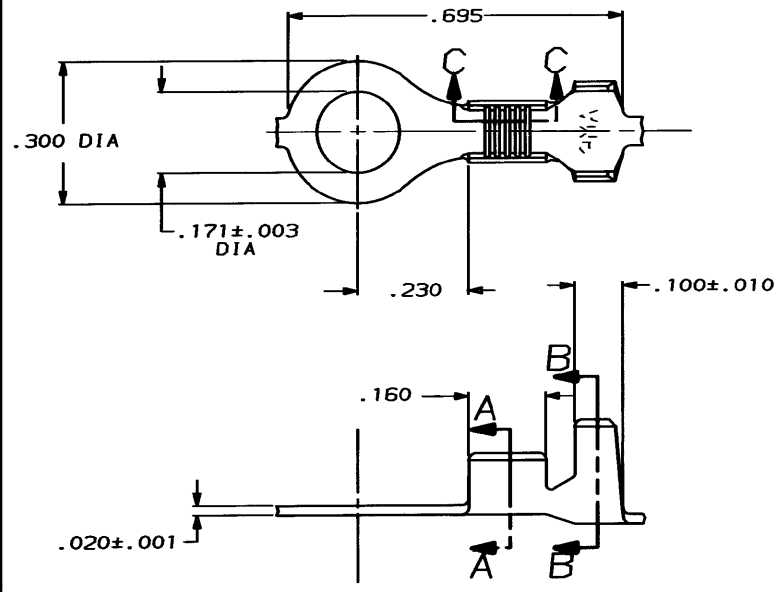
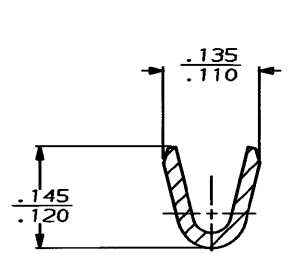


4 3
 DRAWING MADE IN THIRD ANGLE PROJECTION
 THIS DRAWING IS UNPUBLISHED. RELEASED FOR PUBLICATION , 19
 © COPYRIGHT 19 BY AMP INCORPORATED. ALL INTERNATIONAL RIGHTS RESERVED.

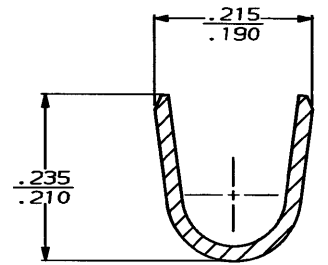
| | | | | | | | |
|-----|------|-----------|---|------|-----|---------------------|---------------|
| LOC | DIST | REVISIONS | | | | DATE | APPD |
| AF | 50 | P | F | ZONE | LTR | DESCRIPTION | |
| | | | | | F | REDRAWN PER AF-6568 | PF/JR 2/28/90 |



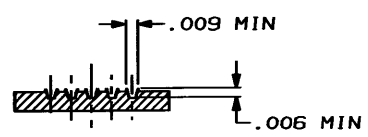
1 CONTINUOUS STRIP ON REELS



SECTION A-A
SCALE 8:1



SECTION B-B
SCALE 8:1



SECTION C-C
SCALE 10:1

| | | | |
|--|---|---|--------------------|
| | .125-.165 DIA | 20-16 AWG | 60322-2 |
| | INSULATION RANGE | MAGNET WIRE RANGE | PART NO |
| DO NOT SCALE PRINT. UNLESS SPECIFIED DIMENSIONS IN INCHES TOLERANCES ON: 2 PLC DEC ± 3 PLC DEC ± .015 ANGLES ± | DR 3/1/90 P FORTNEY CHK 3/1/90 NS FENER APPD 3/1/90 G VETTER | AMP INCORPORATED Harrisburg, Pa. 17105 | |
| MATERIAL #2 HARD BRASS | APPD 3/10/90 R KUZO PRODUCT SPEC | NAME #8 STUD, RING, AMPLIVAR | |
| FINISH .000080 MIN TIN PL PER MIL-T-10727 | APPLICATION SPEC WEIGHT | SIZE B | CAGE CODE 00779 |
| | | DRAWING NO 60322 | SHEET 1 OF 1 |
| | | SCALE 5:1 | |

CUSTOMER DRAWING

AMP 1470-15 REV 6-89
 28 FEB 89 08:48:51 FITS 028MFPZ00M2000M85