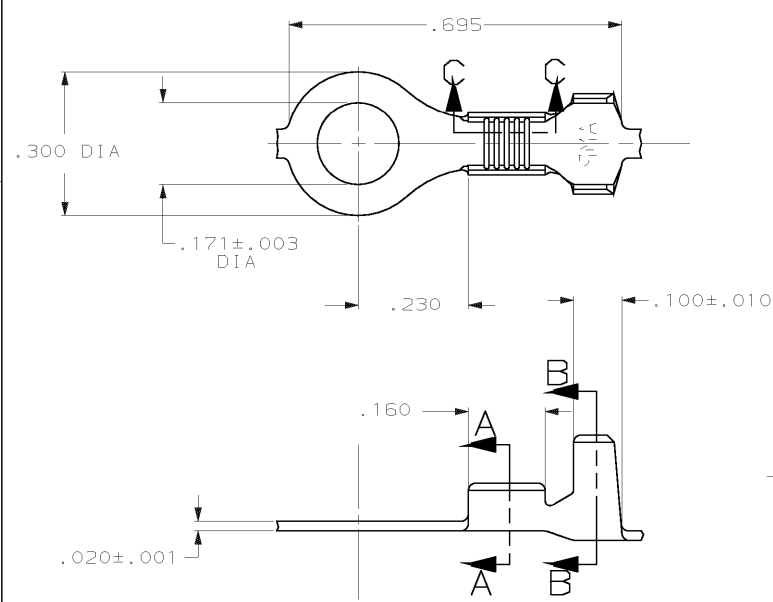


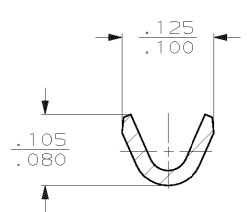
DRAWING MADE IN THIRD ANGLE PROJECTION

THIS DRAWING IS UNPUBLISHED. RELEASED FOR PUBLICATION
 © COPYRIGHT 19 BY AMP INCORPORATED. ALL INTERNATIONAL RIGHTS RESERVED.

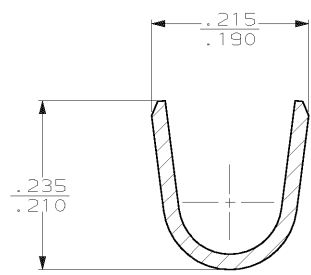
LOC	DIST	ZONE	LTR	REVISIONS	DATE	APPD
AF	50			REVISED PER 063A-0315-01	MF-DD	08MAY01



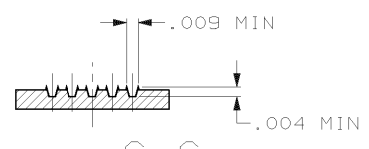
1 CONTINUOUS STRIP ON REELS



SECTION A-A
SCALE 8:1



SECTION B-B
SCALE 8:1



SECTION C-C
SCALE 10:1

	.125-.165 DIA	23-19 AWG	60323-2
	INSULATION RANGE	MAGNET WIRE RANGE	PART NO
DO NOT SCALE PRINT. UNLESS SPECIFIED DIMENSIONS IN INCHES TOLERANCES ON: 2 PLC DEC ± 3 PLC DEC ± .015 ANGLES ± -	DR 3/1/90 P FORNEY CHK 3/1/90 MS FEHER APPD 3/1/90 G YETTER APPD 3/10/90 R KUZO	AMP INCORPORATED Harrisburg, Pa. 17105	
MATERIAL #2 HARD BRASS	PRODUCT SPEC -	NAME #8 STUD RING, AMPLIVAR	
FINISH .000080 MIN TIN PLATE	APPLICATION SPEC -	SIZE B	CAGE CODE 00779
	WEIGHT -	SCALE 5:1	DRAWING NO 60323
			SHEET 1 OF 1

AMP 1470-15 REV 6-89
 08-MAY-01 09:39:19 amp02644 /r/amp02644/edmod

CUSTOMER DRAWING