

4

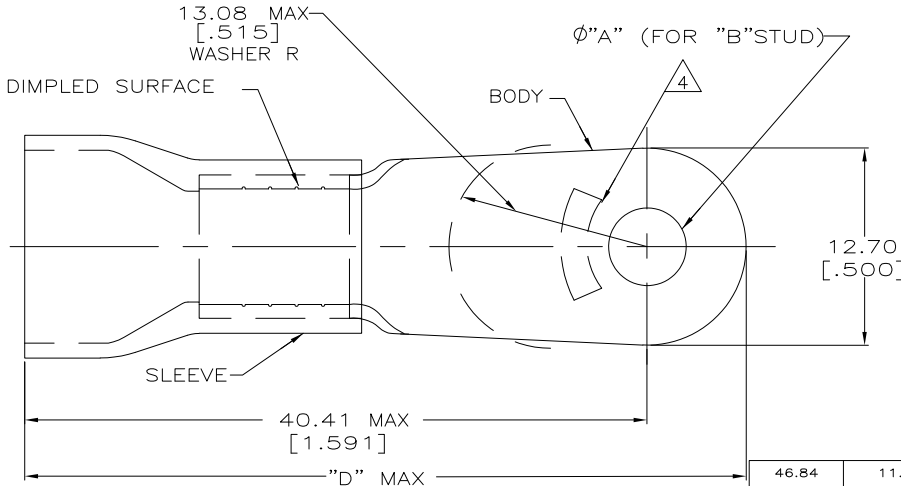
3

2

1

THIS DRAWING IS UNPUBLISHED. RELEASED FOR PUBLICATION
 © COPYRIGHT - By - ALL RIGHTS RESERVED.

LOC	DIST	REVISIONS				
P	LTR	DESCRIPTION	DATE	DWN	APVD	
AB2		REVISED PER ECO-11-004820	11MAR11	RK	HMR	



AMP WIRE RANGE	RA FILE E13288	LR7189 Certified
6 AWG STRANDED	6 AWG STRANDED	6 AWG STRANDED

- 1 STAMP AMP 6* LOCATE APPROX AS SHOWN
- 2 TONGUE MATERIAL THK 1.14±0.08[.045±.003]
- 3 SEE TABLE FOR WIRE INSULATION DIA MAX
- 4 TAPE ITEMS ARE ON 30.48[1.200] CENTERS
- 5 OBSOLETE AND REPLACED BY 52042-5
- 6 OBSOLETE

46.84 [1.844]	11.43 [.450]	1/4	6.73±0.13 [.265±.005]	500	ON TAPE	△1-52042-4
46.84 [1.844]	11.07 [.436]	#10	5.00±0.08 [.197±.003]	500	LOOSE PC	1-52042-3
47.47 [1.869]	9.14 [.360]		100	LOOSE PC, BOX SPL	△5 9-52042-5	
46.84 [1.844]	11.07 [.436]	1/4	6.73±0.13 [.265±.005]	500	ON TAPE	△6 8-52042-5
47.47 [1.869]	9.14 [.360]		#8			4.34±0.08 [.171±.003]
46.84 [1.844]	11.07 [.436]	#10	5.00±0.08 [.197±.003]	100	LOOSE PC	52042-7
47.47 [1.869]	9.14 [.360]		1/4			6.73±0.13 [.265±.005]
46.84 [1.844]	11.07 [.436]	1/4	6.73±0.13 [.265±.005]	100	LOOSE PC	52042-4
47.47 [1.869]	9.14 [.360]		#8			4.34±0.08 [.171±.003]
46.84 [1.844]	11.07 [.436]	#8	6.73±0.13 [.265±.005]	100	LOOSE PC	52042-2
47.47 [1.869]	9.14 [.360]		1/4			6.73±0.13 [.265±.005]
46.84 [1.844]	11.07 [.436]	#8	4.34±0.08 [.171±.003]	100	LOOSE PC	52042

AMP INCORPORATED CUSTOMER SERVICE SYSTEMS		MAX RECOMMENDED OPERATING TEMPERATURE: 105° C
FOR ADDITIONAL PRODUCT INFORMATION OR COPIES OF DRAWINGS AND TECHNICAL DOCUMENTS 1-800-522-6752	PRODUCT INFORMATION CENTER	VOLTAGE RATING 600 V MAX
FOR APPLICATION TOOLING INFORMATION 1-800-722-1111	TOOLING ASSISTANCE CENTER	CIRCULAR MIL AREA: 10.54-16.77mm ² [20,800-33,100] STRANDED
FOR ORDER ENTRY 1-800-526-5142	THIS DRAWING IS A CONTROLLED DOCUMENT FOR AMP INCORPORATED. IT IS SUBJECT TO CHANGE AND THE CONTROLLING ENGINEERING ORGANIZATION SHOULD BE CONTACTED FOR THE LATEST REVISION.	

THIS DRAWING IS A CONTROLLED DOCUMENT.		DWN S.S. GOULDEN 9-29-93	TE TE Connectivity	
DIMENSIONS: mm [INCHES]		CHK R. HERSEY 9-29-93	NAME	
TOLERANCES UNLESS OTHERWISE SPECIFIED: 0 PLC ± - 1 PLC ± - 2 PLC ±0.20[.008] 3 PLC ± - 4 PLC ± - ANGLES ± -		APVD B. BARE 9-29-93	TERMINAL, RING TONGUE, PLASTIC-GRIP,™ WIRE SIZE: 6 AWG	
MATERIAL COPPER PER ASTM B-152 PVC, COLOR: BLUE	FINISH TIN PLATE PER ASTM B-545	PRODUCT SPEC NOT AVAILABLE	SIZE A3	CAGE CODE 00779
CUSTOMER DRAWING		APPLICATION SPEC 114-2161	DRAWING NO C-52042	RESTRICTED TO -
		WEIGHT -	SCALE 4:1	SHEET 1 of 1
		REV AB2		