

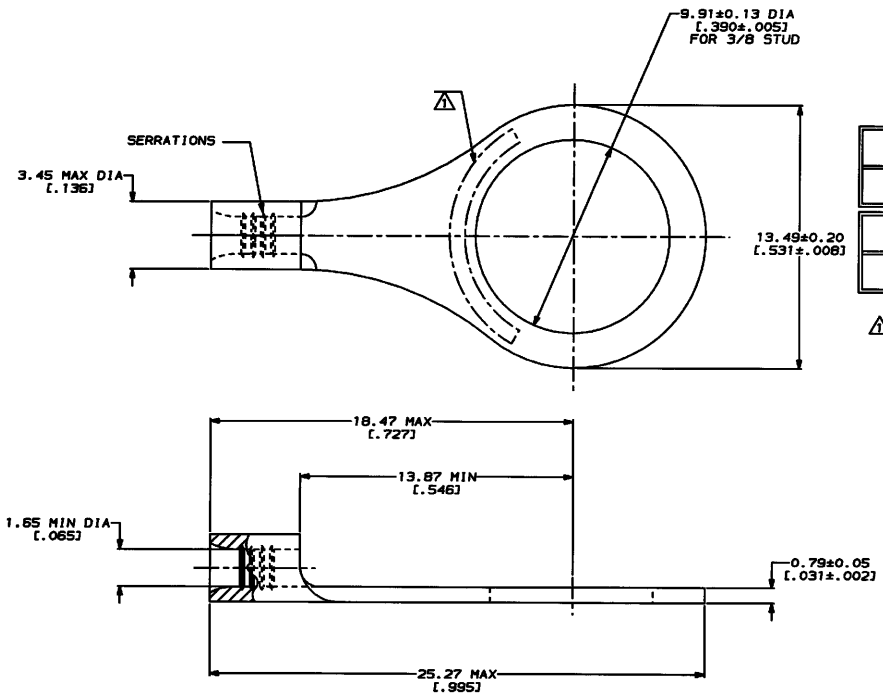
4 3 2 1
 DRAWING MADE IN THIRD ANGLE PROJECTION
 THIS DRAWING IS UNPUBLISHED.
 RELEASED FOR PUBLICATION
 COPYRIGHT © 19 BY AMP INCORPORATED. ALL INTERNATIONAL RIGHTS RESERVED.

REV	DATE	DESCRIPTION	BY	APP'D
6	14	A	REVISED PER 0720-0230-93	

METRIC
 DIMENSIONS LISTED IN mm [INCHES]

AMP WIRE RANGE	E13288 Listed
22-16 AWG STRANDED	22-16 AWG STRANDED
LR7189 Certified	MILITARY P/N AND CLASS
NOT CERTIFIED	NOT APPLICABLE

⚠ STAMP AMP 22-18^{mm} APPROX AS SHOWN
 22-16 TERMINALS ARE STAMPED 22-18 IN
 ACCORDANCE WITH MILITARY SPECIFICATION
 MIL-T-7928; COMMERCIAL WIRE RANGE IS 22-16



31498
 PART NO

AMP INCORPORATED
CUSTOMER SERVICE SYSTEMS

MAX RECOMMENDED OPERATING
 TEMPERATURE:
 170°C MAX

DO NOT SCALE PRINT.
 UNLESS SPECIFIED
 DIMENSIONS ARE FINISHED
 TOLERANCES ON:
 3 PLG DEC ± .1
 ANGLES ± .5

DR 2-4-93
 TA BRIDGEMAN
 CHR 2-4-93
 DA PATTERSON
 APPD 2-4-93
 DE MILLER
 APPD 2-4-93
 J. RECKLEY
 PRODUCT SPEC

AMP AMP Incorporated
 Harrisburg, PA 17105-3808

FOR ADDITIONAL
 PRODUCT INFORMATION OR
 COPIES OF DRAWINGS
 AND TECHNICAL DOCUMENTS

PRODUCT INFORMATION CENTER
 1-800-522-6752

VOLTAGE RATING:
 NOT APPLICABLE

MATERIAL
 COPPER PER
 ASTM B-152
 ANNEALED

FINISH
 TIN PLATE
 0.0025± [0.00100] MIN
 THK PER MIL-T-10727

NAME
**TERMINAL, RING TONGUE,
 BUDGET**

FOR APPLICATION
 TOOLING INFORMATION

TOOLING ASSISTANCE CENTER
 1-800-722-1111

WIRE CROSS SECTIONAL AREA RANGE:
 0.26-1.65mm² (509-3,260) CIR MILS
 STRANDED

APPLCATION SPEC

SIZE
 C 00779

SCALE 8:1
 DRAWING NO
C-31498

FOR ORDER ENTRY
 1-800-526-5142

AMP 0475-0 SEP 93

AMP 0475-0 SEP 93

AMP 0475-0 SEP 93

AMP 0475-0 SEP 93

SHEET 1 OF 1

CUSTOMER DRAWING