

4

3

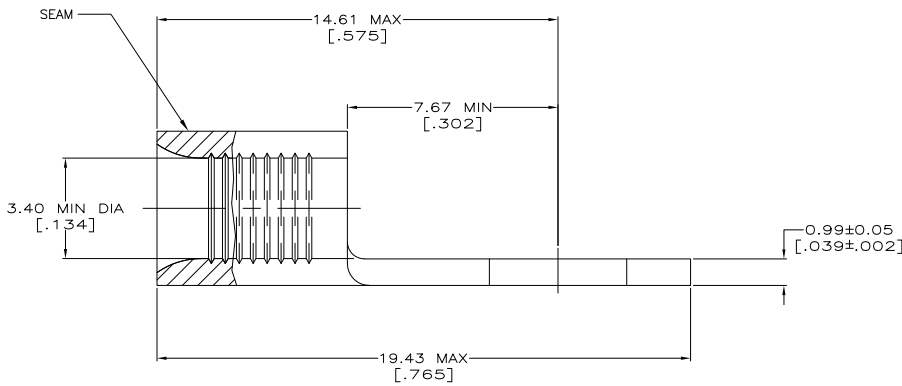
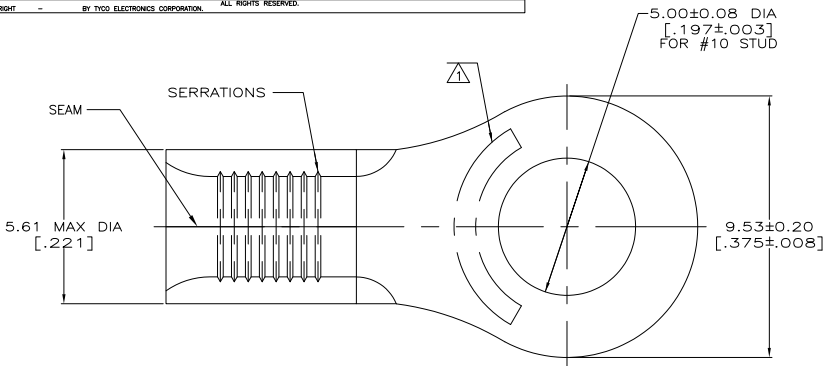
2

1

THIS DRAWING IS UNPUBLISHED. RELEASED FOR PUBLICATION
 © COPYRIGHT BY TYCO ELECTRONICS CORPORATION. ALL RIGHTS RESERVED.

LOC	DIST	REV	DESCRIPTION	DATE	BY	APPD
G	14	F1	REV PER ECR 08-002293	25JAN08	JR	TM

AMP WIRE RANGE	Listed FILE E13288
12-10 AWG STRANDED	12-10 AWG STRANDED



- ⚠ STAMP AMP 12-10* APPROX AS SHOWN
- ⚠ SEAM FACING UPWARD ON TAPE
- ⚠ SEAM FACING DOWNWARD ON TAPE
- ⚠ COPPER PER ASTM B-152, ANNEALED
- ⚠ TIN PLATE 0.00254 [.000100] MIN THK PER ASTM B545

QTY	PACKAGE TYPE	PART NO.
50	LOOSE PIECE, BOX	8-31114-2
2500	ON TAPE, REEL ⚠	31114-3
2500	ON TAPE, REEL ⚠	31114-2
-	LOOSE PIECE	31114

AMP INCORPORATED CUSTOMER SERVICE SYSTEMS		MAX RECOMMENDED OPERATING TEMPERATURE: 170°C MAX	THIS DRAWING IS A CONTROLLED DOCUMENT.	DR. TA BRINKMAN 2-8-93 CR. DA PATTERSON 2-8-93 DR. JIL MECKLEY 2-8-93	Tyco Electronics Corporation Harrisburg, PA 17105-3608
FOR ADDITIONAL PRODUCT INFORMATION OR COPIES OF DRAWINGS AND TECHNICAL DOCUMENTS 1-800-522-6752	PRODUCT INFORMATION CENTER 1-800-522-6752	VOLTAGE RATING: N/A	DIMENSIONS: MM [INCHES]	OTHER FINISHES: 0 PLG # - 1 PLG # - 2 PLG # - 3 PLG # - 4 PLG # - ANGLES # -	NAME TERMINAL, RING TONGUE, BUDGET
FOR APPLICATION TOOLING ASSISTANCE CENTER 1-800-722-1111	TOOLING INFORMATION 1-800-722-1111	CIRCULAR MIL AREA 2.62-8.64mm² [5.180-13.100] STRANDED	MATERIAL - ⚠	FINISH - ⚠	APPLICATION SPEC NONE
FOR ORDER ENTRY 1-800-526-5142	THIS DRAWING IS A CONTROLLED DOCUMENT FOR AMP INCORPORATED. IT IS SUBJECT TO CHANGE AND THE CONTROLLING SUPERSEDING SUPERVISION SHOULD BE CONTACTED FOR THE LATEST REVISION.		CUSTOMER DRAWING	SIZE CASE CODE DRAWING NO A2 00779 C=31114	RESTRICTED TO BUDGET
				SCALE 10:1 SHEET 1 of 1 REV F1	

AMP 1471-9 REV 31MM2000

31114

A