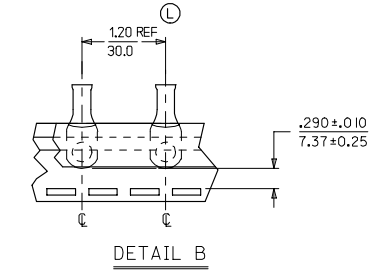
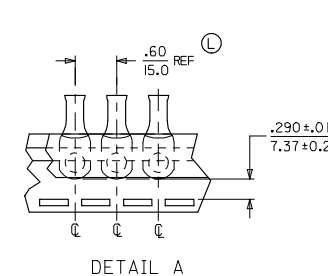
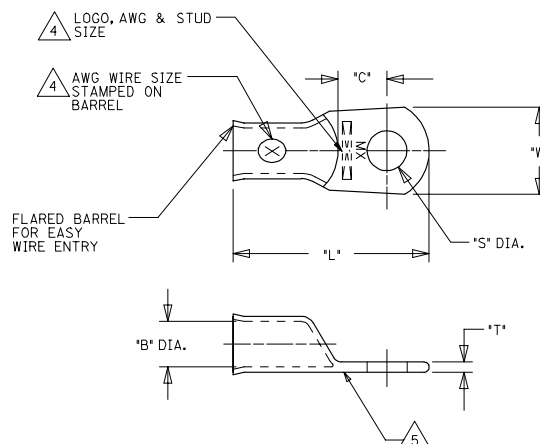


	13	12	11	10	9	8	7	6	5	4	3	2	1				
J	UNPLATED MATERIAL NUMBER	UNPLATED ENG. NUMBER	UNPLATED MAT. NO. ON TAPE	UNPLATED ENG. NO. ON TAPE	PLATED MATERIAL NUMBER	PLATED ENGINEERING NUMBER	PLATED MAT. NO. ON TAPE	PLATED ENG. NO ON TAPE	SEE DETAIL	STUD SIZE	AWG WIRE RANGE	"S"	"L"	"W"	"C"	"B"	"T"
												±.010/(0.25)	±.030/(0.76)	±.020/(0.50)	±.040/(1.02)	±.015/(0.38)	±.015/(0.38)
J	1922 10408	BCL-8 10	190820012	BCL-8 10T	1922 10223	BCL-8 10-PL	190820011	BCL-8 10-PLT	A	10/(4.8)	8	.214/(5.45)	1.187/(30.15)	.438/(11.13)	.376/(9.55)	.185/(4.70)	.070/(1.78)
	1922 10409	BCL-8 14	190820014	BCL-8 14T	1922 10224	BCL-8 14-PL	190820013	BCL-8 14-PLT	A	1/4/(6.4)	8	.278/(7.06)	1.187/(30.15)	.438/(11.13)	.376/(9.55)	.185/(4.70)	.070/(1.78)
	1922 10562	BCL-8 14-WP	---	---	1922 10563	BCL-8 14-WP-PL	---	---	---	1/4/(6.4)	8	.278/(7.06)	1.313/(33.35)	.594/(15.09)	.376/(9.55)	.185/(4.70)	.070/(1.78)
	1922 10411	BCL-85 16	190820017	BCL-85 16T	1922 10225	BCL-85 16-PL	---	---	A	5/16/(7.9)	8	.340/(8.63)	1.187/(30.15)	.438/(11.13)	.376/(9.55)	.185/(4.70)	.070/(1.78)
	1922 10482	BCL-85 16-WP	---	---	1922 10483	BCL-85 16-WP-PL	190820016	BCL-85 16-PLT	A	5/16/(7.9)	8	.340/(8.63)	1.313/(33.35)	.594/(15.09)	.422/(10.72)	.185/(4.70)	.070/(1.78)
	1922 10410	BCL-838-WP	190820015	BCL-838-WPT	1922 10226	BCL-838-WP-PL	1922 10566	BCL-838-WP-PLT	A	3/8/(9.5)	8	.400/(10.16)	1.313/(33.35)	.594/(15.09)	.422/(10.72)	.185/(4.70)	.070/(1.78)
I	1922 10481	BCL-838-XWP	---	---	1922 10484	BCL-838-XWP-PL	---	---	---	3/8/(9.5)	8	.400/(10.16)	1.469/(37.31)	.766/(19.46)	.394/(10.01)	.185/(4.70)	.070/(1.78)
	1922 10415	BCL-8 12-XWP	---	---	1922 10414	BCL-8 12-XWP-PL	---	---	---	1/2/(14.7)	8	.520/(13.21)	1.469/(37.31)	.766/(19.46)	.394/(10.01)	.185/(4.70)	.070/(1.78)
	1922 10425	BCL-6 10	---	---	1922 10424	BCL-6 10-PL	190820003	BCL-6 10-PLT	B	10/(4.8)	6	.214/(5.45)	1.281/(32.54)	.438/(11.13)	.345/(8.75)	.232/(5.89)	.075/(1.90)
	1922 10406	BCL-6 14-WP	190820006	BCL-6 14T	1922 10227	BCL-6 14-WP-PL	190820005	BCL-6 14-PLT	B	1/4/(6.4)	6	.278/(7.06)	1.406/(35.72)	.594/(15.09)	.430/(10.9)	.232/(5.89)	.080/(2.03)
	1922 10494	BCL-6 14 I	---	---	1922 10495	BCL-6 14 I-PL	1922 10498	BCL-6 14 I-PLT	B	1/4/(6.4)	6	.278/(7.06)	1.281/(32.54)	.438/(11.13)	.345/(8.75)	.232/(5.89)	.075/(1.90)
L	1922 10407	BCL-65 16-WP	---	---	1922 10228	BCL-65 16-WP-PL	190820009	BCL-65 16-PLT	B	5/16/(7.9)	6	.340/(8.63)	1.406/(35.72)	.594/(15.09)	.352/(8.94)	.232/(5.89)	.080/(2.03)
H	1922 10493	BCL-65 16	190820010	BCL-65 16T	1922 10492	BCL-65 16-PL	1922 10499	BCL-65 16-PLT	B	5/16/(7.9)	6	.340/(8.63)	1.281/(32.54)	.438/(11.13)	.345/(8.75)	.232/(5.89)	.075/(1.90)
	1922 10384	BCL-638-WP	190820008	BCL-638T	1922 10229	BCL-638-WP-PL	190820007	BCL-638-PLT	B	3/8/(9.5)	6	.400/(10.16)	1.406/(35.72)	.594/(15.09)	.352/(8.94)	.232/(5.89)	.080/(2.03)
	1922 10569	BCL-638-XWP	---	---	1922 10568	BCL-638-XWP-PL	---	---	---	3/8/(9.5)	6	.400/(10.16)	1.563/(39.70)	.766/(19.46)	.422/(10.72)	.232/(5.89)	.080/(2.03)
	1922 10417	BCL-6 12-XWP	---	---	1922 10416	BCL-6 12-XWP-PL	190820004	BCL-6 12-PLT	B	1/2/(14.7)	6	.520/(13.21)	1.563/(39.70)	.766/(19.46)	.352/(8.94)	.232/(5.89)	.080/(2.03)



SALES DRAWING

- NOTES:
- FOR INSPECTION SIGHT HOLE, PLEASE CONSULT FACTORY.
 - OTHER STUD SIZES MAY BE AVAILABLE, PLEASE CONSULT FACTORY.
 - MATERIAL: COPPER PLATING: TIN
 - MARKINGS CAN BE AT EITHER LOCATION SHOWN.
 - IF TONGUE IS TO BE BENT AT ANY ANGLE, IT MUST BE BENT AROUND A RADIUS ONE HALF THE TONGUE THICKNESS.
 - ALL COMPONENTS ARE ROHS COMPLIANT.

REVISED W/ TYPO CORRECTED EC NO. ETC2007-0397 DRAWN BY: 2007/04/27 CHKD: JACQUELLE 2007/05/09 APPR: JACQUELLE 2007/05/10	QUALITY SYMBOLS	GENERAL TOLERANCES (UNLESS SPECIFIED)	DIMENSION STYLE	SCALE	DESIGN UNITS	THIRD ANGLE PROJECTION
	▽=0 ▽=0	mm INCH	IN/MM	---	INCH	
	4 PLACES ± --- ± ---	DRAWN BY: DMYRICK	DATE: 2005/5/3	TITLE: EYELET STYLE COPPER TERMINALS 8 AND 6 AWG LUGS		
	3 PLACES ± --- ± ---	CHECKED BY: RDEROSS	DATE: 2005/5/3	MOLEX INCORPORATED		
	2 PLACES ± --- ± ---	APPROVED BY: RDEROSS	DATE: 2005/5/3	MATERIAL NO. SEE CHART	DOCUMENT NO. SD-19221-001	SHEET NO. 1 OF 1
	1 PLACE ± --- ± ---	DRAFT WHERE APPLICABLE MUST REMAIN WITHIN DIMENSIONS				
	ANGULAR ± --- °	THIS DRAWING CONTAINS INFORMATION THAT IS PROPRIETARY TO MOLEX INCORPORATED AND SHOULD NOT BE USED WITHOUT WRITTEN PERMISSION				