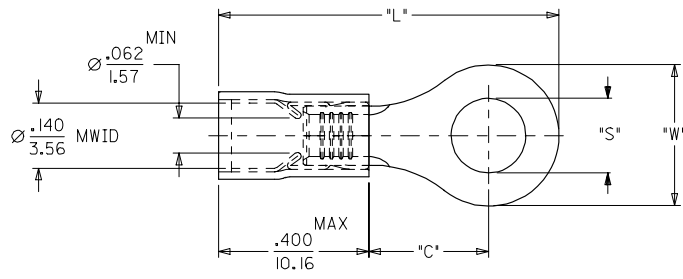
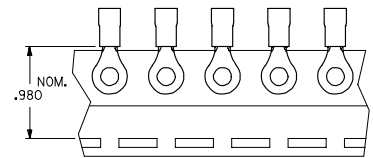


| MATERIAL NUMBER | ALTERNATE NUMBER | STUD SIZE | "S"         | "W"      | Ⓢ "C" MIN | Ⓢ "L" MAX | PACKAGING    |
|-----------------|------------------|-----------|-------------|----------|-----------|-----------|--------------|
| I90730005       | AA-820-02        | 2         | .094/(2.38) | .23(5.7) | .16(4.0)  | .71(18.0) | LOOSE PIECE  |
| I90730007       | AA-820-04        | 4         | .119/(3.02) | .23(5.7) | .16(4.0)  | .71(18.0) |              |
| I90730009       | AA-820-06        | 6         | .146/(3.71) | .23(5.7) | .16(4.0)  | .71(18.0) |              |
| I90730011       | AA-821-06        | 6         | .146/(3.71) | .31(7.9) | .27(6.9)  | .87(22.0) |              |
| I90730013       | AA-821-08        | 8         | .173/(4.39) | .31(7.9) | .27(6.9)  | .87(22.0) |              |
| I90730017       | AA-821-10        | 10        | .198/(5.03) | .31(7.9) | .27(6.9)  | .87(22.0) | TAPE MOUNTED |
| I90730020       | AA-821-209       | 5MM       | .209/(5.30) | .31(7.9) | .27(6.9)  | .87(22.0) |              |
| I90730006       | AA-820-02T       | 2         | .094/(2.38) | .23(5.7) | .16(4.0)  | .71(18.0) |              |
| I90730008       | AA-820-04T       | 4         | .119/(3.02) | .23(5.7) | .16(4.0)  | .71(18.0) |              |
| I90730010       | AA-820-06T       | 6         | .146/(3.71) | .23(5.7) | .16(4.0)  | .71(18.0) |              |
| I90730012       | AA-821-06T       | 6         | .146/(3.71) | .31(7.9) | .27(6.9)  | .87(22.0) |              |
| I90730015       | AA-821-08T       | 8         | .173/(4.39) | .31(7.9) | .27(6.9)  | .87(22.0) |              |
| I90730019       | AA-821-10T       | 10        | .198/(5.03) | .31(7.9) | .27(6.9)  | .87(22.0) |              |
| I90730021       | AA-821-209T      | 5MM       | .209/(5.30) | .31(7.9) | .27(6.9)  | .87(22.0) |              |



- NOTES:
1. MATERIAL: COPPER  
PLATING: ELECTROPLATE TIN
  2. FERRULE: TIN-PLATED BRASS
  3. INSULATION: RED NYLON 94V2.
  4. MWID=MAXIMUM WIRE INSULATION DIA.
  5. ALL DIMENSIONS IN INCHES/(MM).
  6. ASSEMBLY IS ROHS COMPLIANT.

|   |                               |                                       |  |                    |   |                              |
|---|-------------------------------|---------------------------------------|--|--------------------|---|------------------------------|
| REV CHART DIM. C & L<br>EC NO: ETC2007-0223<br>DRAWN/HILLE 2006/12/04<br>CHKD: MACNEIL 2006/12/04<br>APPR: MACNEIL 2006/12/06 | QUALITY SYMBOLS<br>▽=0<br>▽=0 | GENERAL TOLERANCES (UNLESS SPECIFIED) | DIMENSION STYLE<br>IN/MM   | SCALE<br>4:1       | DESIGN UNITS<br>INCH                                    | THIRD ANGLE PROJECTION       |
|   |                               | 4 PLACES ± --- ± ---                  | DRAWN BY<br>HEB  | DATE<br>2000/09/08 | TITLE<br>RING TONGUE TERMINAL<br>AVIKRIMP<br>800 SERIES |                              |
|   |                               | 3 PLACES ± --- ± .005                 | CHECKED BY<br>RWD  | DATE<br>2000/09/08 | MOLEX INCORPORATED                                      |                              |
|   |                               | 2 PLACES ± 0.13 ± .01                 | APPROVED BY<br>RWD   | DATE<br>2000/09/08 | MATERIAL NO.<br>SEE CHART                               | DOCUMENT NO.<br>SD-19073-002 |
|   | 1 PLACE ± 0.25 ± ---          | ANGULAR ±1/2°                         | DRAFT WHERE APPLICABLE<br>MUST REMAIN<br>WITHIN DIMENSIONS   |                    |   |                              |
|   |                               |                                       | THIS DRAWING CONTAINS INFORMATION THAT IS PROPRIETARY TO MOLEX<br>INCORPORATED AND SHOULD NOT BE USED WITHOUT WRITTEN PERMISSION |                    |   |                              |