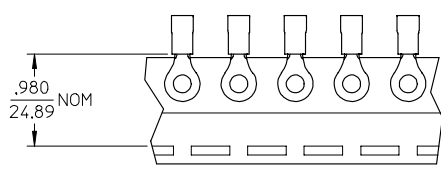
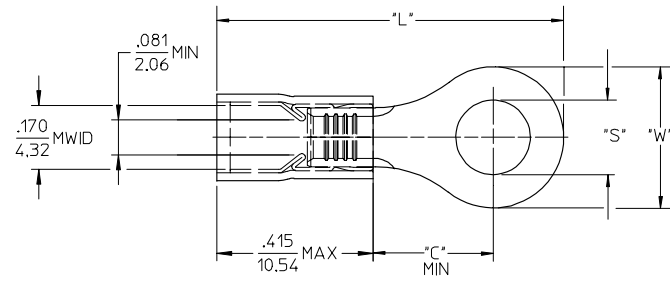


MATERIAL NUMBER	ENG. NO.	MATERIAL NUMBER TAPE MOUNTED	ENG. NO.	STUD SIZE	"S" ±.005	"W" MAX	"C" MIN	"L" MAX
190730301	BB-818-14	190730058	BB-818-14T	14	.265 (6.73)			
190730059	BB-818-38	190730060	BB-818-38T	38	.390 (9.91)	.544 (13.82)	.554 (14.07)	1.225 (31.12)
190730061	BB-818-56	190730062	BB-818-56T	56	.328 (8.33)			
190730065	BB-823-04	190730066	BB-823-04T	04	.119 (3.02)			
190730067	BB-823-06	190730070	BB-823-06T	06	.146 (3.71)	.270 (6.86)	.209 (5.31)	.770 (20.32)
190730072	BB-823-08	190730073	BB-823-08T	08	.173 (4.39)			
190730074	BB-825-10	190730075	BB-825-10T	10	.198 (5.03)			
190730076	BB-825-14	190730077	BB-825-14T	14	.265 (6.73)	.477 (12.12)	.388 (9.86)	1.077 (27.36)
190730079	BB-825-56	190730080	BB-825-56T	56	.328 (8.33)			



SALES DRAWING

- NOTES:
1. MATERIAL: COPPER (.031/0.79) THICK PLATING; ELECTROPLATE TIN
 2. FERRULE: TIN-PLATED BRASS
 3. INSULATION: BLUE NYLON
 4. MWID=MAXIMUM WIRE INSULATION DIA.
 5. ALL DIMENSIONS IN INCHES (MM).
 6. WIRE SIZE: 16-14 AWG
1.0-2.5 MM²

EC NO: ETC2004-0167 DRW: DMYRICK 2004/03/31 CHK: HBEITZEL 2004/04/01 APPR: RDEROSS 2004/04/01	QUALITY SYMBOLS	GENERAL TOLERANCES (UNLESS SPECIFIED)	SCALE 4:1	DESIGN UNITS INCH	THIRD ANGLE PROJECTION	REVISE ON CAD ONLY																							
	0 0	<table border="1"> <tr> <th></th> <th>mm</th> <th>INCH</th> </tr> <tr> <td>4 PLACES</td> <td>± .---</td> <td>± .---</td> </tr> <tr> <td>3 PLACES</td> <td>± .---</td> <td>± .005</td> </tr> <tr> <td>2 PLACES</td> <td>± 0.13</td> <td>± .01</td> </tr> <tr> <td>1 PLACE</td> <td>± 0.25</td> <td>± .---</td> </tr> </table>		mm	INCH	4 PLACES	± .---	± .---	3 PLACES	± .---	± .005	2 PLACES	± 0.13	± .01	1 PLACE	± 0.25	± .---	<table border="1"> <tr> <th colspan="2">DIMENSION STYLE</th> </tr> <tr> <td>IN/MM</td> <td>TITLE</td> </tr> <tr> <td>DRAWN BY DMYRICK</td> <td>DATE 03/12/15</td> </tr> <tr> <td>CHECKED BY HBEITZEL</td> <td>DATE 03/12/15</td> </tr> <tr> <td>APPROVED BY RDEROSS</td> <td>DATE 03/12/15</td> </tr> </table>	DIMENSION STYLE		IN/MM	TITLE	DRAWN BY DMYRICK	DATE 03/12/15	CHECKED BY HBEITZEL	DATE 03/12/15	APPROVED BY RDEROSS	DATE 03/12/15	RING TONGUE TERMINAL AVIKRIMP, 800-SERIES 16-14 AWG
			mm	INCH																									
		4 PLACES	± .---	± .---																									
3 PLACES	± .---	± .005																											
2 PLACES	± 0.13	± .01																											
1 PLACE	± 0.25	± .---																											
DIMENSION STYLE																													
IN/MM	TITLE																												
DRAWN BY DMYRICK	DATE 03/12/15																												
CHECKED BY HBEITZEL	DATE 03/12/15																												
APPROVED BY RDEROSS	DATE 03/12/15																												
DRAFT WHERE APPLICABLE MUST REMAIN WITHIN DIMENSIONS	MOLEX INCORPORATED MATERIAL NO. SEE CHART DOCUMENT NO. SD-19073-005 SHEET NO. 1 OF 1	THIS DRAWING CONTAINS INFORMATION THAT IS PROPRIETARY TO MOLEX INCORPORATED AND SHOULD NOT BE USED WITHOUT WRITTEN PERMISSION																											