

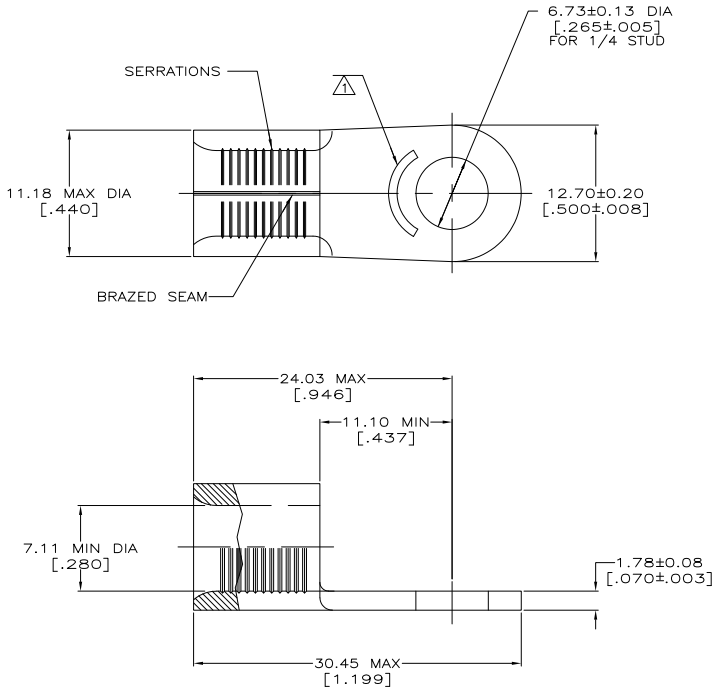
THIS DRAWING IS UNPUBLISHED. RELEASED FOR PUBLICATION. ALL RIGHTS RESERVED.

REV	DATE	DESCRIPTION	BY	APP
H1	11MAR11	REVISED PER ECO-11-004820	RK	HMR



AMP WIRE RANGE	E13288 Listed
4 AWG SOLID OR STRANDED	4 AWG STRANDED
LR7189 Certified	MILITARY P/N AND CLASS
4 AWG SOLID OR STRANDED	MS 20659-111 CLASS 2 P/N 31811 ONLY

△ STAMP AMP 4W* APPROX AS SHOWN



AMP INCORPORATED CUSTOMER SERVICE SYSTEMS		MAX RECOMMENDED OPERATING TEMPERATURE: 170° C MAX
FOR ADDITIONAL PRODUCT INFORMATION OR COPIES OF DRAWINGS AND TECHNICAL DOCUMENTS	PRODUCT INFORMATION CENTER 1-800-522-6752	VOLTAGE RATING: NOT APPLICABLE
FOR APPLICATION TOOLING INFORMATION	TOOLING ASSISTANCE CENTER 1-800-722-1111	WIRE CROSS SECTIONAL AREA RANGE: 16.8-26.7mm ² [33,100-52,600] CIR MILS SOLID OR STRANDED
FOR ORDER ENTRY	1-800-526-5142	THIS DRAWING IS A CONTROLLED DOCUMENT FOR AMP INCORPORATED. IT IS SUBJECT TO CHANGE AND THE CONTROLLING ENGINEERING ORGANIZATION SHOULD BE CONTACTED FOR THE LATEST REVISION.

500	ON TAPE, REEL	2-31811-5
500	LOOSE PIECE, BOX	2-31811-3
-	LOOSE PIECE	31811
QTY	PACKAGING TYPE	PART NO

THIS DRAWING IS A CONTROLLED DOCUMENT.		BY TA BRINKMAN 3-29-93	DATE 3-29-93
DIMENSIONS: mm[INCHES]		CHK DA PATTERSON 3-29-93	DATE 3-29-93
TOLERANCES UNLESS OTHERWISE SPECIFIED:		APP DE MILLER 3-29-93	DATE 3-29-93
0 P/C	± .005	PRODUCT SPEC	
1 P/C	± .005	APPLICATION SPEC	
2 P/C	± .005	WEIGHT	
3 P/C	± .005	SIZE	A2
4 P/C	± .005	CAGE CODE	00779
ANGLE	± .005	DRAWING NO	31811
MATERIAL	COPPER PER ASTM B-152 ANNEALED	RESTRICTED TO	
FINISH	TIN PLATE 0.0025(0.010) MM THK PER MIL-STD-2072	CUSTOMER DRAWING	
		SCALE	4:1
		SHEET	1 of 1
		REV	H1

1471-9 (5/11)