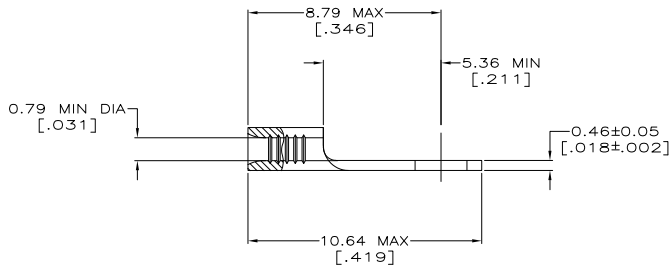
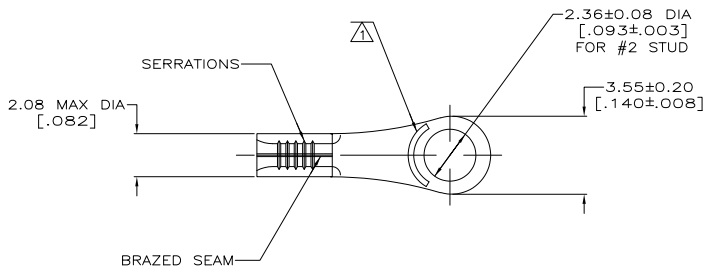


THIS DRAWING IS UNPUBLISHED. RELEASED FOR PUBLICATION. ALL RIGHTS RESERVED.

LOC		DIST		REVISIONS		
P	LR	DESCRIPTION	DATE	BY	APPD	
H2		REVISED PER ECO-11-004917	11MAR11	RK	HMR	

**METRIC**  
DIMENSIONS LISTED IN mm [ INCHES ]

<b>AMP</b> WIRE RANGE	E13288 Listed
26-22 AWG SOLID OR STRANDED	NOT LISTED
LR7189 Certified	MILITARY P/N AND CLASS
NOT CERTIFIED	NOT APPLICABLE



- △ STAMP AMP APPROX AS SHOWN
- △ TIN PLATE 0.00254[.000100] MIN THK PER MIL-T-10727
- △ GOLD PLATE 0.00254[.000100] MIN THK PER MIL-G-45204 OVER NICKEL PLATE 0.00127[.000050] MIN THK PER QQ-N-290
- △ CLEANED, UNPLATED

<b>AMP INCORPORATED CUSTOMER SERVICE SYSTEMS</b>		MAX RECOMMENDED OPERATING TEMPERATURE: 170° C MAX
FOR ADDITIONAL PRODUCT INFORMATION OR COPIES OF DRAWINGS AND TECHNICAL DOCUMENTS	PRODUCT INFORMATION CENTER 1-800-522-6752	VOLTAGE RATING: NOT APPLICABLE
FOR APPLICATION TOOLING INFORMATION	TOOLING ASSISTANCE CENTER 1-800-722-1111	WIRE CROSS SECTIONAL AREA RANGE: 0.1-0.41mm <sup>2</sup> [202-810] CIR MILS SOLID OR STRANDED
FOR ORDER ENTRY	1-800-526-5142	THIS DRAWING IS A CONTROLLED DOCUMENT FOR AMP INCORPORATED. IT IS SUBJECT TO CHANGE AND THE CONTROLLING ORGANIZATION SHOULD BE CONTACTED FOR THE LATEST REVISION.

-	LOOSE PIECE	△ 4	50334-3
100	LOOSE PIECE, BOX	△ 2	8-50334-0
-	LOOSE PIECE	△ 3	50334-2
5000	ON TAPE, REEL	△ 2	50334-1
-	LOOSE PIECE	△ 2	50334
QTY	PACKAGE TYPE	FINISH	PART NUMBER

THIS DRAWING IS A CONTROLLED DOCUMENT.		DR. TA. BRINKMAN 3-9-93	TE Connectivity
DIMENSIONS: -INCHES-		DR. DA. PATTERSON 3-9-93	
MATERIAL: COPPER PER ASTM B-152		FINISH: ANNEALED	TERMINAL, RING TONGUE, SOLISTRAND
CUSTOMER DRAWING		SCALE: 8:1	SHEET 1 of 1 REV H2