

4

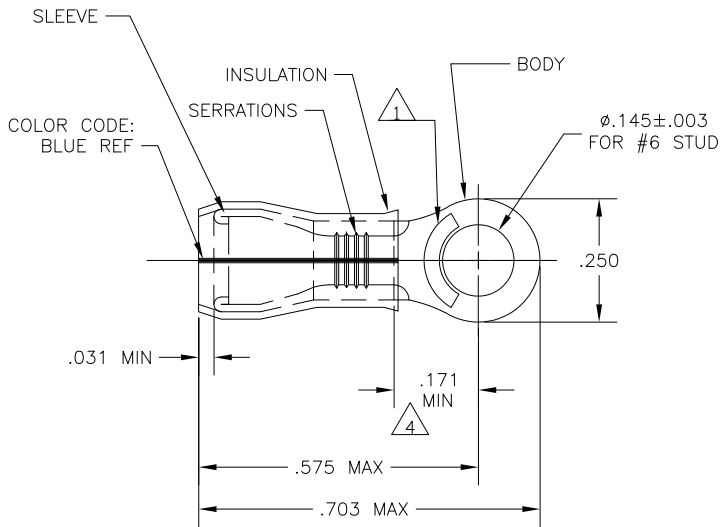
3

2

1

THIS DRAWING IS UNPUBLISHED. RELEASED FOR PUBLICATION
 © COPYRIGHT - BY TYCO ELECTRONICS CORPORATION. ALL RIGHTS RESERVED.

LOC	DIST	REVISIONS				
P	LTR	DESCRIPTION	DATE	DWN	APVD	
G	14					
	M2	REV PER ECR 09-026074	30NOV09	JR	TM	



- 1 STAMP AMP 16-14* APPROX AS SHOWN
 2 WIRE INSULATION DIA: .105-.150
 3 TONGUE MATERIAL THK: .031±.002
 4 APPLIES FROM EDGE OF METAL WIRE BARREL TO CENTER OF STUD HOLE.
 5 MEETS M7928/4-106, CLASS 1 & 2
 MEETS M7928/13-106, CLASS 2

100	LOOSE PIECE, BOX	SAME AS 53415-1	8-53415-1
BULK	LOOSE PIECE	SAME AS 53415-1	8-53415-0
1000	LOOSE PIECE	BODY: COPPER PER ASTM B152 GOLD PLATE ASTM B488, TYPE 2, GRADE C, .00005 MIN THK OVER NICKEL PL (QQ-N-290) .00003 MIN SLEEVE: COPPER PER ASTM B152 TIN/LEAD (93-7) PLATE PER ASTM B545 (3% MIN LEAD CONTENT) INSULATION: PVF2, COLOR-NATURAL	53415-3
1000	LOOSE PIECE	BODY: COPPER PER ASTM B152 TIN/LEAD (93-7) PLATE PER ASTM B545 (3% MIN LEAD CONTENT) SLEEVE: COPPER PER ASTM B152 TIN/LEAD (93-7) PLATE PER ASTM B545 (3% MIN LEAD CONTENT) INSULATION: PVF2, COLOR-NATURAL	53415-1
QTY	PACKAGE TYPE	MATERIAL & FINISH	PART NO

THIS DRAWING IS A CONTROLLED DOCUMENT.		DWN JR RUTH 25OCT07	Tyco Electronics Corporation Harrisburg, Pa 17105-3608	
DIMENSIONS: INCHES	TOLERANCES UNLESS OTHERWISE SPECIFIED:	CHK T MICHELUTTI 25OCT07	NAME T MICHELUTTI	
	0 PLC ± -	APVD T MICHELUTTI 25OCT07	PRODUCT SPEC -	
	1 PLC ± -	APPLICATION SPEC -	SIZE A3	
	2 PLC ± -	WEIGHT -	CAGE CODE 00779	DRAWING NO 53415
	3 PLC ± .008	MATERIAL SEE TABLE	RESTRICTED TO -	
	4 PLC ± -	FINISH SEE TABLE	CUSTOMER DRAWING	
	5 ANGLES ± -	SCALE 4:1 SHEET 1 OF 1 REV M2		

AMP 1470-19 REV 31MAR2000