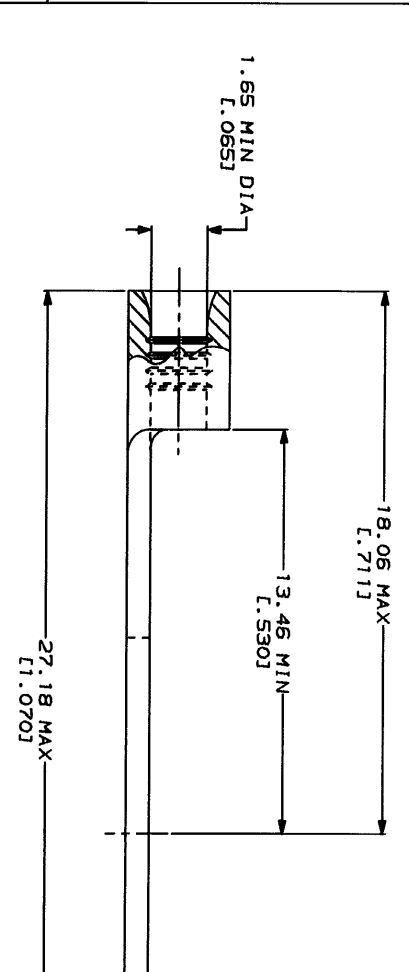
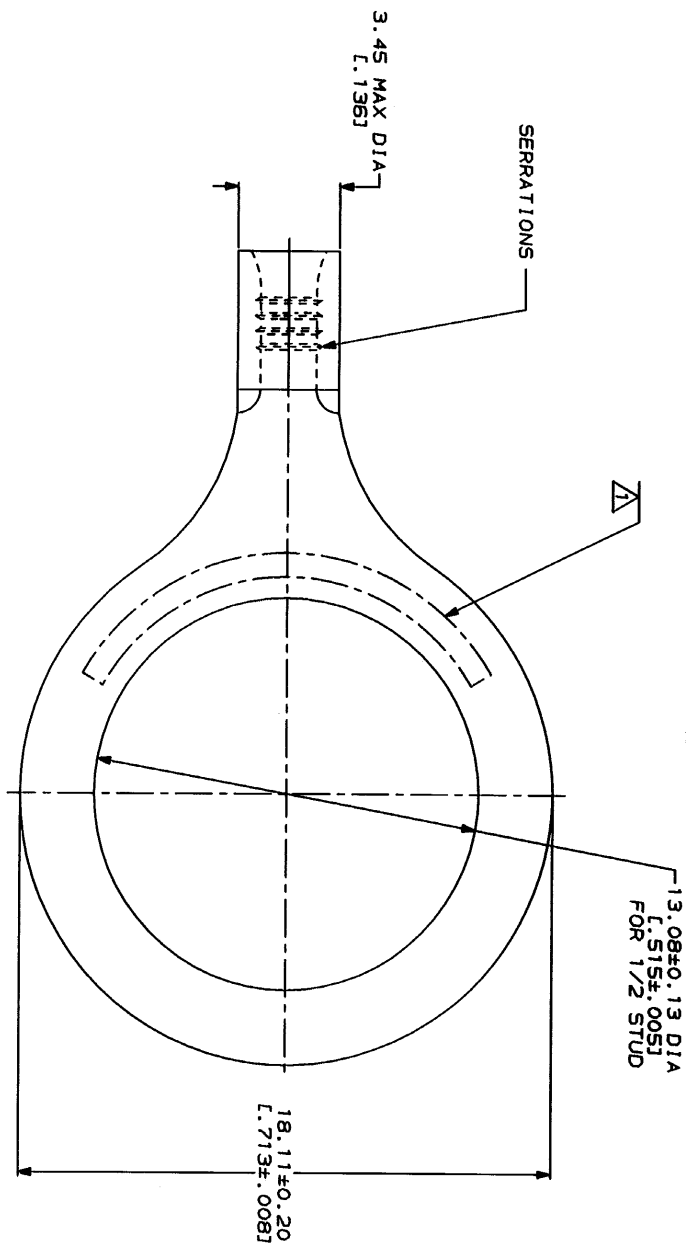


REV	DATE	DESCRIPTION	BY	APP'D
1	0720-0230-93	REVISED PER 0720-0230-93		



<b>AMP</b> WIRE RANGE 22-16 AWG STRAINED	<b>IL</b> E13288 Listed 22-16 AWG STRAINED
● LR7199 Certified	MILITARY P/N AND CLASS
NOT CERTIFIED	NOT APPLICABLE

△ STAMP AMP 22-18\* APPROX AS SHOWN  
22-16 TERMINALS ARE STAMPED 22-18 IN  
ACCORDANCE WITH MILITARY SPECIFICATION  
MIL-T-7928, COMMERCIAL WIRE RANGE IS 22-16



**AMP INCORPORATED**  
**CUSTOMER SERVICE SYSTEMS**

FOR ADDITIONAL PRODUCT INFORMATION OR COPIES OF DRAWINGS AND TECHNICAL DOCUMENTS	PRODUCT INFORMATION CENTER 1-800-522-6752
FOR APPLICATION TOOLING INFORMATION	TOOLING ASSISTANCE CENTER 1-800-722-1111
FOR ORDER ENTRY	1-800-526-5142

MAX RECOMMENDED OPERATING TEMPERATURE: 170°C MAX	VOLTAGE RATING: NOT APPLICABLE
WIRE CROSS SECTIONAL AREA RANGE: 0.26-1.55mm <sup>2</sup> (509-3,260) CIR MILS STRANDED	

DO NOT SCALE PRINT. DIMENSIONS IN INCHES TOLERANCES ON: 3 PL DEC ± .005 2 ANGLES ± .005	FINISH TIN PLATE 0.0025±(L. 000100) MIN THK PER MIL-T-10727
DR 3-4-93 TA BRINKMAN	NAME <b>AMP</b> AMP Incorporated Harrisburg, PA 17105-3608
CHK 3-4-93 DA PATTERSON	TERMINAL, RING TONGUE, BUDGET
APPD 2-4-93 DE MILLER	SIZE CAGE CODE 00779
APPD 2-4-93 JL MCKELVEY	DRAWING NO 328970
PRODUCT SPEC	SCALE 8:1
APPLICATION SPEC	SHEET 1 OF 1
WEIGHT	