

4

3

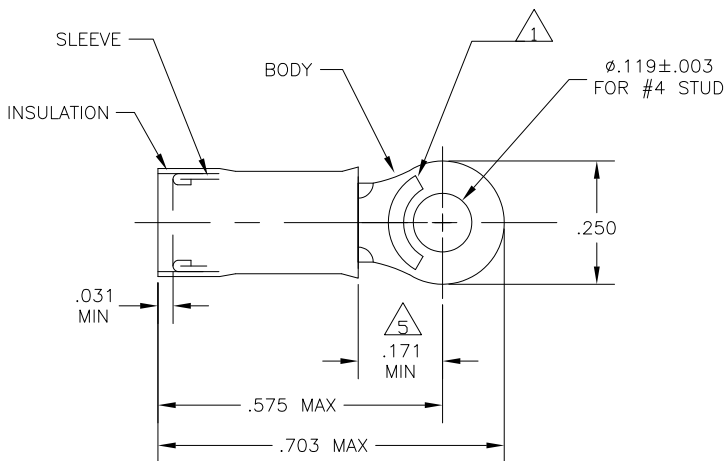
2

1

THIS DRAWING IS UNPUBLISHED. RELEASED FOR PUBLICATION  
 © COPYRIGHT - By - ALL RIGHTS RESERVED.

LOC	DIST	REVISIONS			
P	LTR	DESCRIPTION	DATE	DWN	APVD
	D2	REVISED PER ECO-11-004820	11MAR11	RK	HMR

<b>AMP</b> WIRE RANGE	E13288 Listed	LR7189 Certified
16-14 AWG SOLID OR STRANDED	16-14 AWG SOLID OR STRANDED	16-14 AWG SOLID OR STRANDED



- 1 STAMP AMP 16-14\* APPROX AS SHOWN  
 2 WIRE INSULATION DIA: .105-.150  
 3 TONGUE MATERIAL THK: .031±.002  
 4 BODY & SLEEVE: CU PER ASTM B152  
 BODY & SLEEVE: TIN PLATE .000100 MIN  
 EXT THK PER ASTM B545  
 INSULATION: NYLON PER ASTM D4066  
 COLOR - BLUE  
 5 APPLIES FROM EDGE OF METAL WIRE BARREL  
 TO CENTER OF STUD HOLE.  
 6 MEETS MS25036-152, CLASS 1 & 2

100	LOOSE PIECE, BOX	4	8-324159-1
2500	324159 ON TAPE & REEL	4	2-324159-2
---	LOOSE PIECE	4	324159
QTY	PACKAGE TYPE	MATERIAL FINISH	PART NO

CUSTOMER SERVICE SYSTEMS		MAX RECOMMENDED OPERATING TEMPERATURE:	THIS DRAWING IS A CONTROLLED DOCUMENT.		DWN	TE Connectivity		
		170°C MAX			JR RUTH			
		VOLTAGE RATING:	DIMENSIONS:	TOLERANCES UNLESS OTHERWISE SPECIFIED:	CHK			
		300 V MAX	INCHES		T MICHELUTTI			
		CIRCULAR MIL AREA:			APVD			
		1.04-2.62mm <sup>2</sup> [2.050-5.180] STRANDED OR SOLID			T MICHELUTTI			
		THIS DRAWING IS A CONTROLLED DOCUMENT FOR AMP INCORPORATED. IT IS SUBJECT TO CHANGE AND THE CONTROLLING ENGINEERING ORGANIZATION SHOULD BE CONTACTED FOR THE LATEST REVISION.			PRODUCT SPEC			
FOR ADDITIONAL PRODUCT INFORMATION OR COPIES OF DRAWINGS AND TECHNICAL DOCUMENTS	PRODUCT INFORMATION CENTER 1-800-522-6752				APPLICATION SPEC			
FOR APPLICATION TOOLING INFORMATION	TOOLING ASSISTANCE CENTER 1-800-722-1111				WEIGHT			
FOR ORDER ENTRY	1-800-526-5142		SEE TABLE	SEE TABLE	SIZE	CAGE CODE	DRAWING NO	RESTRICTED TO
					A3	00779	C-324159	
					CUSTOMER DRAWING		SCALE	SHEET
							5:1	1 OF 1
								REV
								D2

1470-19 (3/11)