

4

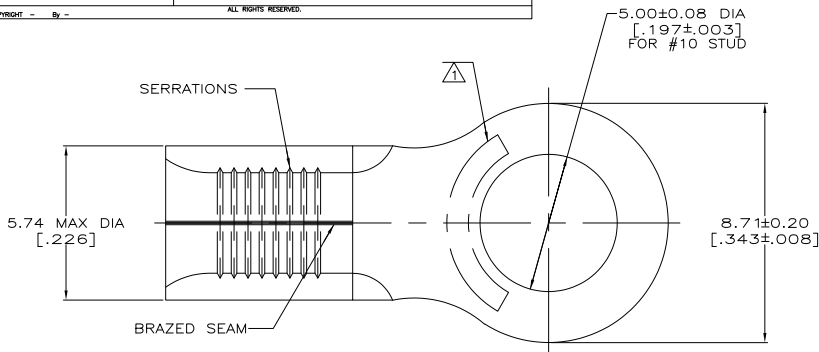
3

2

1

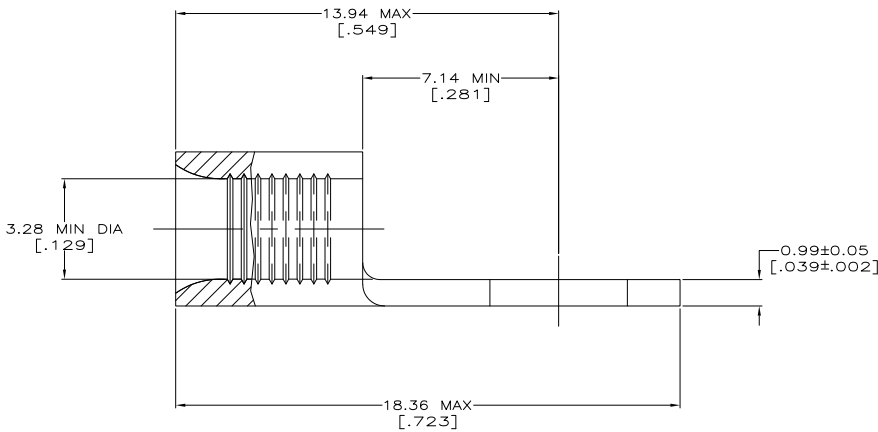
THIS DRAWING IS UNPUBLISHED. RELEASED FOR PUBLICATION. ALL RIGHTS RESERVED.

LOC	DIST	REVISIONS		MS	DATE	BY	APP'D
G	14	P	LR				
		E1		REVISED PER ECO-11-004820	11MAR11	RK	HMR



AMP WIRE RANGE	E13288 Listed
12-10 AWG SOLID OR STRANDED	12-10 AWG STRANDED
LR7189 Certified	MILITARY P/N AND CLASS
12-10 AWG SOLID OR STRANDED	NOT APPLICABLE

- STAMP AMP 12-10* APPROX AS SHOWN
- 0.00254 [.000100] MIN TIN PER ASTM B-545
- CLEANED, UNPLATED



AMP INCORPORATED CUSTOMER SERVICE SYSTEMS		MAX RECOMMENDED OPERATING TEMPERATURE: 170° C MAX
FOR ADDITIONAL PRODUCT INFORMATION OR COPIES OF DRAWINGS AND TECHNICAL DOCUMENTS	PRODUCT INFORMATION CENTER 1-800-522-6752	VOLTAGE RATING: NOT APPLICABLE
FOR APPLICATION TOOLING INFORMATION	TOOLING ASSISTANCE CENTER 1-800-722-1111	WIRE CROSS SECTIONAL AREA RANGE: 2.62-6.64mm ² [5,180-13,100] CIR MILS SOLID OR STRANDED
FOR ORDER ENTRY	1-800-526-5142	THIS DRAWING IS A CONTROLLED DOCUMENT FOR AMP INCORPORATED. IF ANY CHANGE AND THE CONTROLLING ENGINEERING ORGANIZATION SHOULD BE CONTACTED FOR THE LATEST REVISION.

	-	LOOSE PIECE	322455-1
	2500	ON TAPE	2-322455-1
	----	LOOSE PIECE	322455
FINISH	QUANTITY	PACKAGING TYPE	PART NO

THIS DRAWING IS A CONTROLLED DOCUMENT.		DR. TA. BRINKMAN 3-17-93	TE Connectivity
DIMENSIONS: INCHES		DR. DA. PATTERSON 2-17-93	
OTHER DIMENSIONS: MILLIMETERS		DR. DE. MILLER 3-17-93	TERMINAL, RING TONGUE, SOLISTRAND
MATERIAL: COPPER PER ASTM B-152 ANNEALED		FINISH: SEE TABLE	SIZE CASE CODE DRAWING NO A2 00779 C=322455
			RESTRICTED TO CUSTOMER DRAWING SCALE 10:1 SHEET 1 of 1 REV E1

1471-9 (3/11)

322455

A