

4

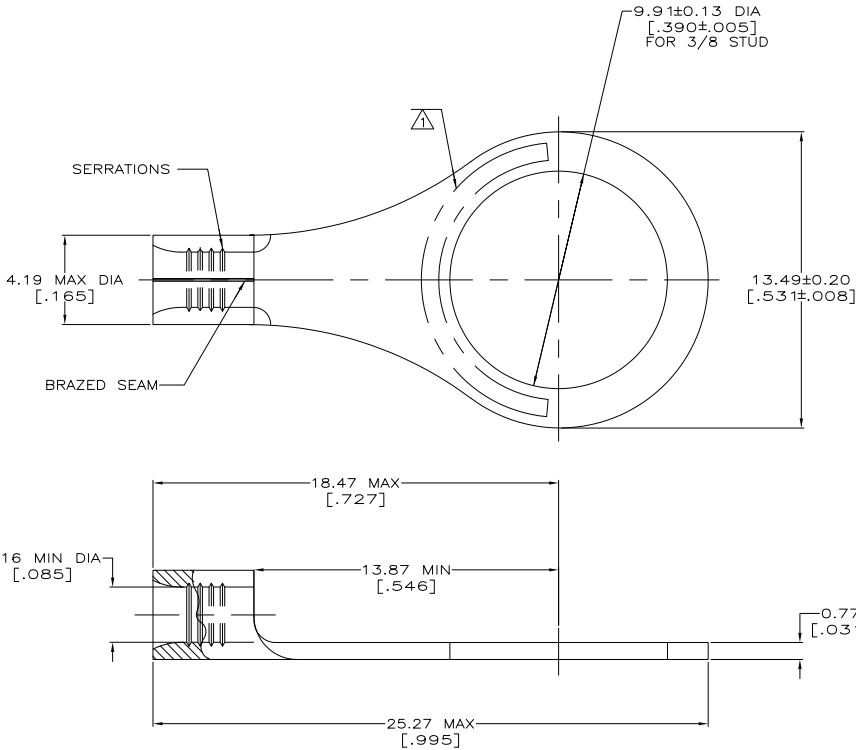
3

2

1

THIS DRAWING IS UNPUBLISHED. RELEASED FOR PUBLICATION  
 © COPYRIGHT - By - ALL RIGHTS RESERVED.

LOC	DIST	REV	DESCRIPTION	DATE	BY	APPD
G	14	H1	REVISED PER ECO-11-004917	11MAR11	RK	HMR



<b>AMP</b> WIRE RANGE	E13288 Listed
16-14 AWG SOLID OR STRANDED	16-14 AWG SOLID OR STRANDED
LR7189 Certified	MILITARY P/N AND CLASS
16-14 AWG SOLID OR STRANDED	M7928/7-10 CLASS 2 P/N 34126 & 2-34126-2 ONLY

- ⚠ STAMP AMP 16-14\* APPROX AS SHOWN
- ⚠ TIN PLATE 0.00254 [.000100] MIN THK PER ASTM B-545.
- ⚠ GOLD PLATE 0.00127 [.000050] MIN THK PER MIL-G-45204 OVER NICKEL PLATE 0.00076 [.000030] MIN THK PER QQ-N-290.
- ⚠ PRELIMINARY - NOT FOR PRODUCTION

<b>AMP INCORPORATED CUSTOMER SERVICE SYSTEMS</b>		MAX RECOMMENDED OPERATING TEMPERATURE: 170° C MAX
FOR ADDITIONAL PRODUCT INFORMATION OR COPIES OF DRAWINGS AND TECHNICAL DOCUMENTS	PRODUCT INFORMATION CENTER 1-800-522-6752	VOLTAGE RATING: NOT APPLICABLE
FOR APPLICATION TOOLING INFORMATION	TOOLING ASSISTANCE CENTER 1-800-722-1111	WIRE CROSS SECTIONAL AREA RANGE: 1.04-2.62mm <sup>2</sup> [2,050-5,180] CIR MILS SOLID OR STRANDED
FOR ORDER ENTRY	1-800-526-5142	THIS DRAWING IS A CONTROLLED DOCUMENT FOR AMP INCORPORATED. IT IS SUBJECT TO CHANGE AND THE CONTROLLING ENGINEERING ORGANIZATION SHOULD BE CONTACTED FOR THE LATEST REVISION.

⚠	----	LOOSE PIECE	⚠	2-34126-1
⚠	100	LOOSE PIECE, BOX	⚠	8-34126-1
⚠	5000	ON TAPE	⚠	2-34126-2
⚠	---	LOOSE PIECE	⚠	34126
FINISH	QUANTITY	PACKAGING TYPE	PART NO	

THIS DRAWING IS A CONTROLLED DOCUMENT.

DIMENSIONS: INCHES	DATE: 3-17-93	BY: TA BRINKMAN	CHK: DA PATTERSON	DATE: 3-17-93	NAME: DE MILLER
0 PLC	1 PLC	2 PLC	3 PLC	4 PLC	ANGLES
---	---	---	---	---	---

MATERIAL: COPPER PER ASTM B-152 ANNEALED

FINISH: SEE TABLE

SIZE	CAGE CODE	DRAWING NO	RESTRICTED TO
A2	00779	C=34126	---

CUSTOMER DRAWING

SCALE: 8:1 SHEET 1 of 1 REV H1

1471-9 (3/11)

34126

A