

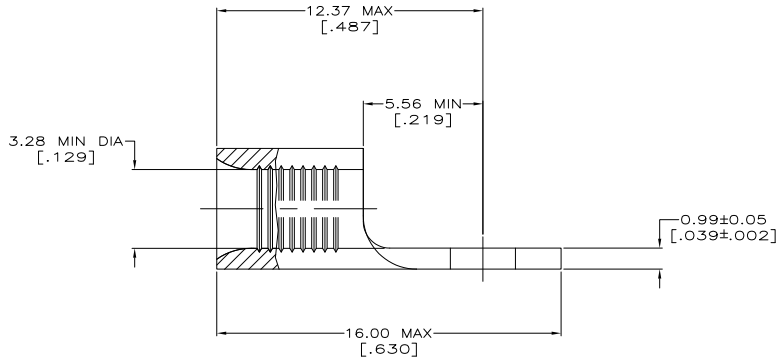
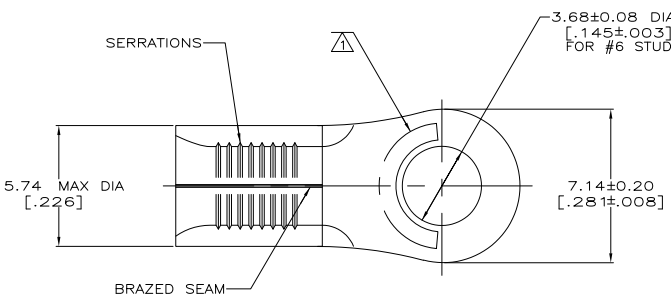
THIS DRAWING IS UNPUBLISHED. RELEASED FOR PUBLICATION. ALL RIGHTS RESERVED.

LOC	REV	DESCRIPTION	DAP	DATE	DRN	APPD
G	14	REVISED PER ECO-11-004820		11MAR11	RK	HMR

METRIC
DIMENSIONS LISTED IN mm [INCHES]

AMP WIRE RANGE 12-10 AWG SOLID OR STRANDED	E13288 Listed 12-10 AWG STRANDED
LR7189 Certified 12-10 AWG SOLID OR STRANDED	MILITARY P/N AND CLASS MS20659-165 CLASS 2 P/N 35476 & 2-35476-1 ONLY

△ STAMP AMP 12-10* APPROX AS SHOWN



AMP INCORPORATED CUSTOMER SERVICE SYSTEMS		MAX RECOMMENDED OPERATING TEMPERATURE: 170° C MAX
FOR ADDITIONAL PRODUCT INFORMATION OR COPIES OF DRAWINGS AND TECHNICAL DOCUMENTS	PRODUCT INFORMATION CENTER 1-800-522-6752	VOLTAGE RATING: NOT APPLICABLE
FOR APPLICATION TOOLING INFORMATION	TOOLING ASSISTANCE CENTER 1-800-722-1111	WIRE CROSS SECTIONAL AREA RANGE: 2.62-6.64mm ² [5,180-13,100] CIR MILS SOLID OR STRANDED
FOR ORDER ENTRY	1-800-526-5142	THIS DRAWING IS A CONTROLLED DOCUMENT FOR AMP INCORPORATED. IT IS SUBJECT TO CHANGE AND THE CONTROLLING ENGINEERING ORGANIZATION SHOULD BE CONTACTED FOR THE LATEST REVISION.

50	LOOSE PIECE, BOX	8-35476-2
2000	ON TAPE	2-35476-1
---	LOOSE PIECE	35476
QUANTITY	PACKAGING TYPE	PART NO

THIS DRAWING IS A CONTROLLED DOCUMENT.		BY TA BRINKMAN 3-17-93	TE TE Connectivity	
DIMENSIONS: mm [INCHES]		CHK DA PATTERSON 3-17-93	DRAWING NO A200779	
MATERIAL: COPPER PER ASTM B-152 ANNEALED		APPROVED DE MILLER 3-17-93	DRAWING NO 35476	
FINISH: TIN PLATE 0.0004(10/10) MM PER MIL-C-10797		PRODUCT SPEC	RESTRICTED TO	
		APPLICATION SPEC	SCALE 8:1	
		WEIGHT	SHEET 1 of 1	
		CUSTOMER DRAWING	REV C1	

1471-9 (5/11)