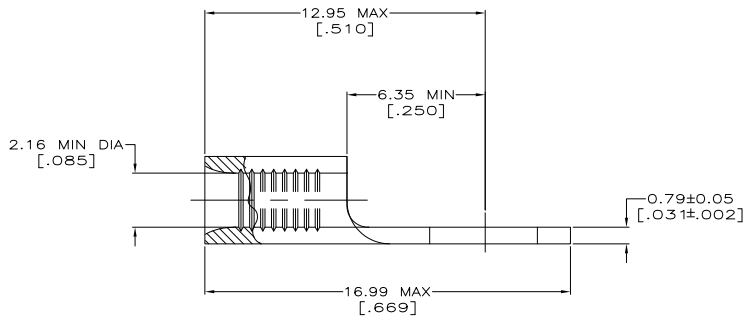
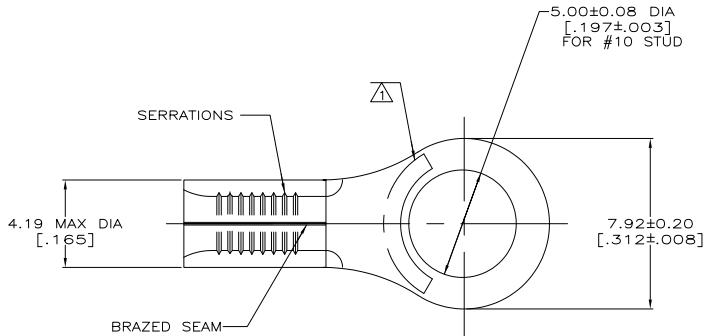


THIS DRAWING IS UNPUBLISHED. RELEASED FOR PUBLICATION. ALL RIGHTS RESERVED.

REV	DATE	DESCRIPTION	SU	DATE	BY	APP
1						
2		REVISED PER ECO-11-004917		11MAR11	RK	HMR



AMP WIRE RANGE	Listed FILE E13288	LR7189 Certified
16-14 AWG SOLID OR STRANDED	16-14 AWG SOLID OR STRANDED	16-14 AWG SOLID OR STRANDED

- △ STAMP AMP 16-14* APPROX AS SHOWN
 - △ COPPER PER ASTM B-152, ANNEALED
 - △ TIN PLATE 0.00254 [.000100] MIN THK PER ASTM B-545
 - △ MEETS M7928/7-8, CLASS 1 & 2
 - △ MEETS M7928/7-8, CLASS 2
- 6 RECOMMENDED OPERATING TEM IS 170°C MAX
- 7 WIRE CROSS SECTIONAL AREA RANGE IS 1.04-2.62mm² [2,050-5,180] CMA

5000	ON TAPE	△ 2-320093-1
----	LOOSE PIECE	△ 320093
QUANTITY	PACKAGING TYPE	PART NO.

THIS DRAWING IS A CONTROLLED DOCUMENT.		BY TA BRINKMAN 3-17-83	TE Connectivity	
DIMENSIONS: mm[INCHES]		CHK DA PATTERSON 3-17-83	TERMINAL, RING TONGUE, SOLISTRAND	
TOLERANCES UNLESS OTHERWISE SPECIFIED:		APP JL MECKLEY 3-17-83	SIZE A2	QAGE CODE 00779
Ø	± .01	PRODUCT SPEC	DRAWING NO	RESTRICTED TO
1/16	± .005	APPLICATION SPEC	C=320093	—
1/32	± .0025	WEIGHT	SCALE	SHEET
1/64	± .00125	CUSTOMER DRAWING	8:1	1 of 1
ANGLES	± .001			REV C2