

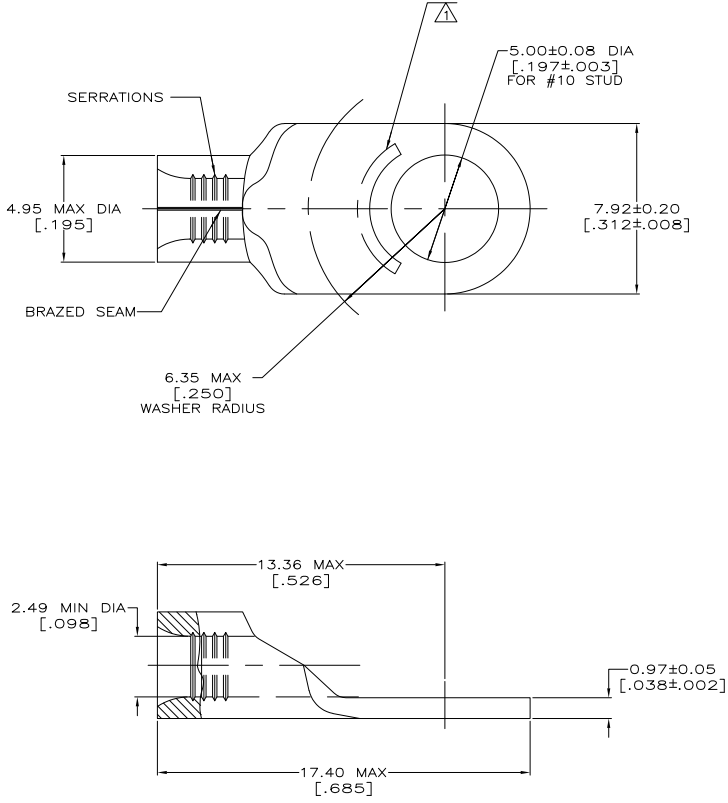
THIS DRAWING IS UNPUBLISHED. RELEASED FOR PUBLICATION. ALL RIGHTS RESERVED.

LOC	DIST	REVISIONS		
G	14	REVISED PER ECO-11-005027	DATE	DWN
			11MAR11	RK

METRIC
DIMENSIONS LISTED IN mm [INCHES]

AMP WIRE RANGE 14-12 AWG SOLID OR STRANDED	E13288 Listed 14-12 AWG STRANDED
LR7189 Certified 14-12 AWG SOLID OR STRANDED	MILITARY P/N AND CLASS NOT APPLICABLE

△ STAMP AMP 14-12* APPROX AS SHOWN



AMP INCORPORATED CUSTOMER SERVICE SYSTEMS		MAX RECOMMENDED OPERATING TEMPERATURE: 170° C MAX
FOR ADDITIONAL PRODUCT INFORMATION OR COPIES OF DRAWINGS AND TECHNICAL DOCUMENTS	PRODUCT INFORMATION CENTER 1-800-522-6752	VOLTAGE RATING: NOT APPLICABLE
FOR APPLICATION TOOLING INFORMATION	TOOLING ASSISTANCE CENTER 1-800-722-1111	WIRE CROSS SECTIONAL AREA RANGE: 1.65-4.17mm ² [3,260-8,230] CIR MILS SOLID OR STRANDED
FOR ORDER ENTRY	1-800-526-5142	THIS DRAWING IS A CONTROLLED DOCUMENT FOR AMP INCORPORATED. IT IS SUBJECT TO CHANGE AND THE CONTROLLING ENGINEERING ORGANIZATION SHOULD BE CONTACTED FOR THE LATEST REVISION.

2500	ON TAPE	1-321828-0
---	LOOSE PIECE	321828
QUANTITY	PACKAGING TYPE	PART NO

THIS DRAWING IS A CONTROLLED DOCUMENT.		OWN TA BRINKMAN 3-17-93	TE TE Connectivity	
DIMENSIONS: MM[INCHES]		CHK DA PATTERSON 3-17-93	TERMINAL, RING TONGUE, SOLISTRAND™	
TOLERANCES UNLESS OTHERWISE SPECIFIED:		APP DE MILLER 3-17-93	SIZE A2	
MATERIAL: COPPER PER ASTM B-152 ANNEALED		FINISH: TIN PLATE 0.00254(0.00100) MIN THK. PER MIL-1-10722	WEIGHT ---	DRAWING NO 00779
		CUSTOMER DRAWING		SCALE 8:1
				SHEET 1 of 1
				REV C1

141-9 (5/11)

321828