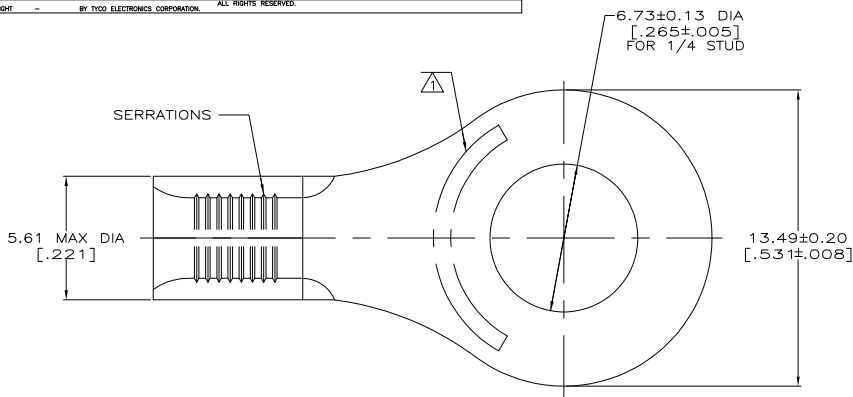


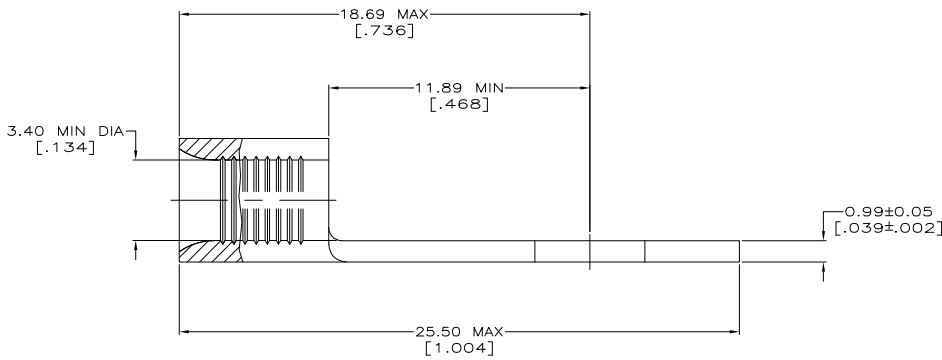
THIS DRAWING IS UNPUBLISHED. RELEASED FOR PUBLICATION
 © COPYRIGHT BY TYCO ELECTRONICS CORPORATION. ALL RIGHTS RESERVED.

LOC	DIST	REVISIONS		DATE	BY	APP'D
G	14	P	LTR			
		E1	REV PER EOR 06-005716 & 005726	15MAR06	JR	MS



- 1 STAMP AMP 12-10* APPROX AS SHOWN
- 2 COPPER PER ASTM B-152, ANNEALED
- 3 0.00254 [0.000100] MIN TIN PER ASTM B-545
- 4 MAX OPERATING TEMP 170°C MAX
- 5 WIRE CROSS SECTION AREA RANGE: 2.62-6.64mm² [5,180-13,100] CIR MILS

AMP WIRE RANGE	Listed FILE E13288	LR7189 Certified
12-10 AWG STRANDED	12-10 AWG STRANDED	NOT CERTIFIED



50	LOOSE PIECE, BOX	8-31122-2
2,500	TAPE MOUNTED, REEL	3-31122-7
-	LOOSE PIECE	31122
QTY	PACKAGE TYPE	PART NO.

THIS DRAWING IS A CONTROLLED DOCUMENT.		DR TA BRINKMAN 2-9-93	Tyco Electronics Corporation Harrisburg, PA 17105-3608	
DIMENSIONS: INCHES		DR DA PATTERSON 2-9-93	TERMINAL, RING TONGUE, BUDGET	
TOLERANCES UNLESS OTHERWISE SPECIFIED:		APP JIL MECKLEY 2-9-93	RESTRICTED TO	
Ø	PLC	±	SIZE	CAGE CODE
Ø	PLC	±	A2	00779
Ø	PLC	±	C=	31122
Ø	PLC	±	SCALE	8:1
Ø	PLC	±	SHEET	1 of 1
Ø	PLC	±	REV	E1
Ø	PLC	±	CUSTOMER DRAWING	

AMP 1471-9 REV 31MM2000

31122

A