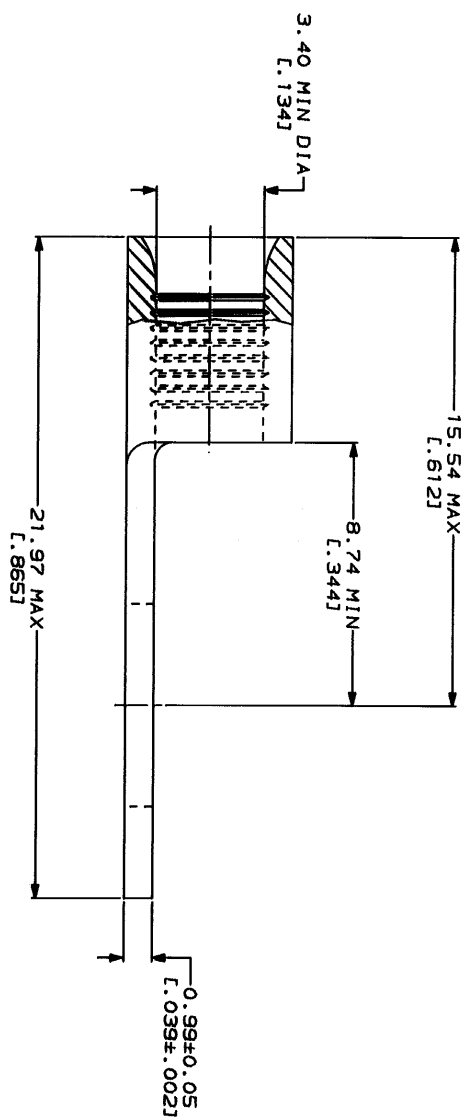


METRIC

[DIMENSIONS LISTED IN MM [INCHES]]

AMP	UL
WIRE RANGE	E13288 Listed
12-10 AWG STRANDED	12-10 AWG STRANDED
● LR7189 Certified	MILITARY P/N AND CLASS
NOT CERTIFIED	NOT APPLICABLE

△ STAMP AMP 12-10* APPROX AS SHOWN



AMP INCORPORATED
CUSTOMER SERVICE SYSTEMS

FOR ADDITIONAL PRODUCT INFORMATION OR COPIES OF DRAWINGS AND TECHNICAL DOCUMENTS	PRODUCT INFORMATION CENTER 1-800-522-6752	MAX RECOMMENDED OPERATING TEMPERATURE: 170°C MAX
FOR APPLICATION TOOLING INFORMATION	TOOLING ASSISTANCE CENTER 1-800-722-1111	VOLTAGE RATING: NOT APPLICABLE
FOR ORDER ENTRY	1-800-526-5142	WIRE CROSS SECTIONAL AREA RANGE: 2.62-6.64mm ² [5.180-13.100] CIR MILS STANDED

DO NOT SCALE PRINT. UNLESS SPECIFIED OTHERWISE DIMENSIONS IN MILLIMETERS ON DRAWINGS. 3 PL DEC ± ANGLES

FINISH: TIN PLATE
0.0025±(L.000100) MIN THK PER MIL-1-10727

DR: 2-9-93 CHK: TA BRINKMAN DA: PATTERSON	APPD: 2-9-93 DE: HILLER	NAME: AMP
PRODUCT SPEC	APPLICATION SPEC	AMP Incorporated Harrisburg, PA 17105-3608
WEIGHT	SCALE: 8:1	TERMINAL, RING TONGUE, BUDGET
	SIZE: 00779	DRAWING NO: 34965
		SHEET: 1 OF 1

CUSTOMER DRAWING