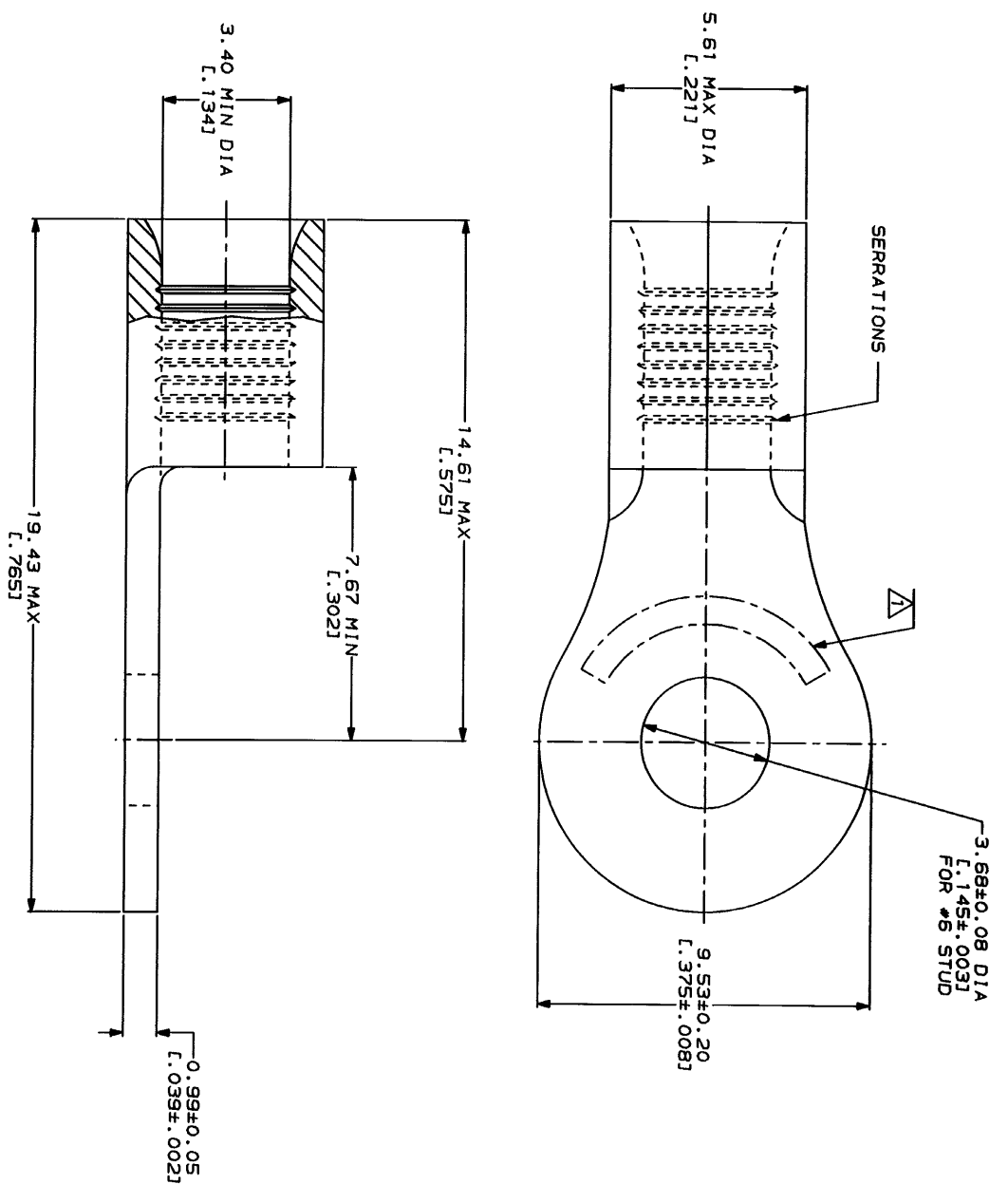


REV	DATE	DESCRIPTION	BY	APP
1	07/20/93	REVISED PER 0720-0230-93	C	

**METRIC**  
DIMENSIONS LISTED IN mm [ INCHES ]

<b>AMP</b> WIRE RANGE 12-10 AWG STRANDED	<b>UL</b> E13289 Listed
<b>AMP</b> WIRE RANGE 12-10 AWG STRANDED	<b>MILITARY P/N</b> AND CLASS NOT APPLICABLE

△ STAMP AMP 12-10\* APPROX AS SHOWN



AMP INCORPORATED  
CUSTOMER SERVICE SYSTEMS

FOR ADDITIONAL PRODUCT INFORMATION OR COPIES OF DRAWINGS AND TECHNICAL DOCUMENTS  
FOR APPLICATION TOOLING INFORMATION  
FOR ORDER ENTRY

MAX RECOMMENDED OPERATING TEMPERATURE: 170°C MAX  
VOLTAGE RATING: NOT APPLICABLE  
WIRE CROSS SECTIONAL AREA RANGE: 2.62-6.64mm<sup>2</sup> [5.190-13.100] CIR MILS STRANDED

PRODUCT INFORMATION CENTER 1-800-522-6752  
TOOLING ASSISTANCE CENTER 1-800-722-1111  
1-800-526-5142

DO NOT SCALE PRINT. UNLESS SPECIFIED DIMENSIONS IN INCHES—TOLERANCES ON: 1. FRACTIONS ± .005 2. DECIMALS ± .002 3. ANGLES ± .1°

FINISH: TIN PLATE  
0.0025-1.0001001 MIN THK PER MIL-T-10727

OR 2-9-93 TA BULKMAN  
CHK 2-9-93 DA PATTERSON  
APPD 2-9-93 DE MILLER  
APPD 2-9-93 JL HECKLEY

APPLICATION SPEC  
WEIGHT

**AMP**  
AMP Incorporated  
Harrisburg, PA 17105-3608

TERMINAL, RING TONGUE, BUDGET  
SIZE: CAGE CODE 00779 DRAWING NO: 31112  
SCALE: 10:1 SHEET: 1 OF 1