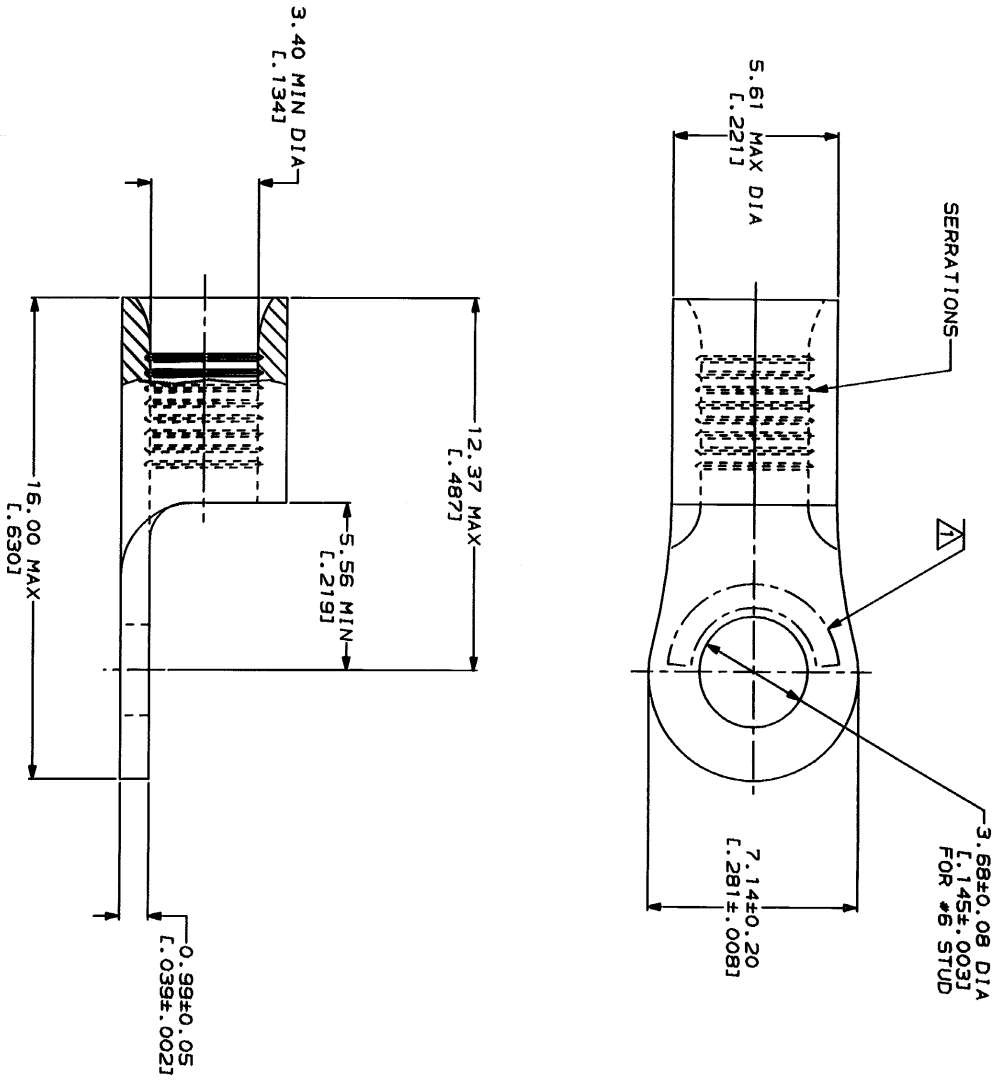




LOC	DIST	REV	DATE	DESCRIPTION	BY	APP'D
6	14	A		REVISED PER 0720-0230-93		

AMP WIRE RANGE	UL E13288 Listed
12-10 AWG STRANDED	12-10 AWG STRANDED
● LR7189 Certified	MILITARY P/N AND CLASS
NOT CERTIFIED	NOT APPLICABLE

△ STAMP AMP 12-10* APPROX AS SHOWN



**AMP INCORPORATED
 CUSTOMER SERVICE SYSTEMS**

FOR ADDITIONAL
 PRODUCT INFORMATION OR
 COPIES OF DRAWINGS
 AND TECHNICAL DOCUMENTS
 FOR APPLICATION
 TOOLING INFORMATION
 FOR ORDER ENTRY

PRODUCT INFORMATION CENTER
 1-800-522-6752

TOOLING ASSISTANCE CENTER
 1-800-722-1111

1-800-526-5142

MAX RECOMMENDED OPERATING
 TEMPERATURE: 170°C MAX

VOLTAGE RATING:
 NOT APPLICABLE

WIRE CROSS SECTIONAL AREA RANGE:
 2.62-6.64mm² (S,180-13,100) CIR MILS
 STRANDED

DO NOT SCALE PRINT.
 DIMENSIONS SPECIFIED
 UNLESS OTHERWISE
 TOLERANCES: .01
 3 PLG DEC ±
 ANGLES ±
 MATERIAL
 COPPER PER
 ASTM B-152
 ANNEALED

DR 2-5-83
 TA BRINKMAN

CHK 2-5-83
 DA PATTERSON

APPD 2-5-83
 DE MILLER

APPD 2-5-83
 JL HECKLEY

PRODUCT SPEC

FINISH
 TIN PLATE
 0.00254 [L.000100] MIN
 THK PER MIL-T-10727

APPLICATION SPEC

WEIGHT

SCALE 8:1

AMP
 AMP Incorporated
 Harrisburg, PA 17105-3608

TERMINAL, RING TONGUE,
 BUDGET

34892
 PART NO

SIZE GAGE CODE DRAWING NO
 00779 G-34892

SHEET 1 OF 1