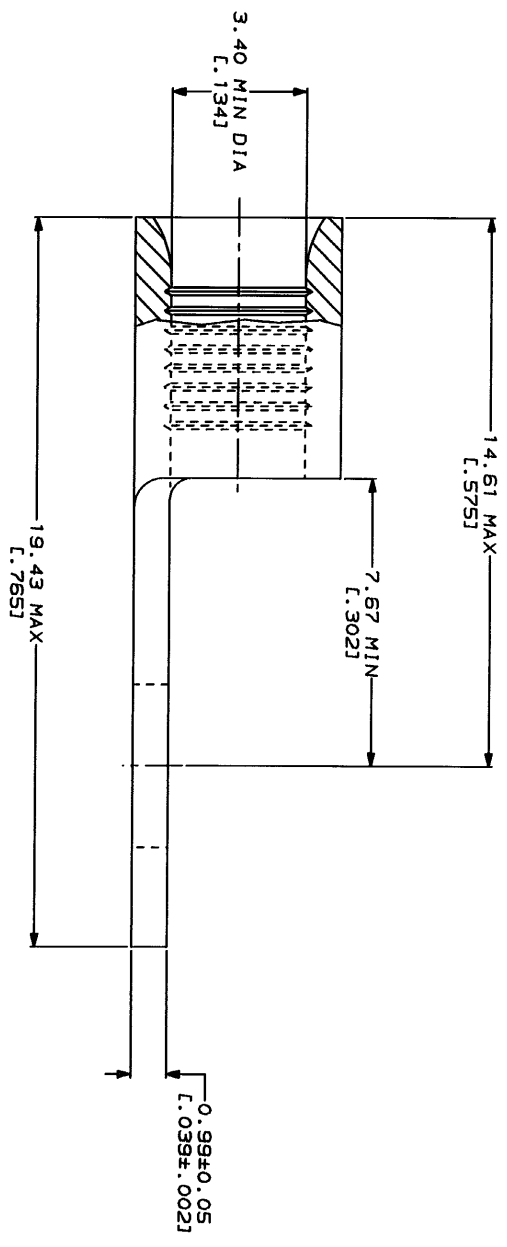


**METRIC**  
DIMENSIONS LISTED IN mm [ INCHES ]

<b>AMP</b>	WIRE RANGE	<b>UL</b> Listed	E13288
	12-10 AWG STRANDED		12-10 AWG STRANDED
<b>LR7169</b>	Certified		MILITARY P/N AND CLASS
NOT CERTIFIED			NOT APPLICABLE

△ STAMP AMP 12-10\* APPROX AS SHOWN



AMP INCORPORATED  
CUSTOMER SERVICE SYSTEMS

FOR ADDITIONAL PRODUCT INFORMATION OR COPIES OF DRAWINGS AND TECHNICAL DOCUMENTS	PRODUCT INFORMATION CENTER 1-800-522-6752	MAX RECOMMENDED OPERATING TEMPERATURE: 170°C MAX
FOR APPLICATION TOOLING INFORMATION	TOOLING ASSISTANCE CENTER 1-800-722-1111	VOLTAGE RATING: NOT APPLICABLE
FOR ORDER ENTRY	1-800-526-5142	WIRE CROSS SECTIONAL AREA RANGE: 2.62-6.64mm <sup>2</sup> [5.180-13.100] CIR MILS STRANDED

DO NOT SCALE PRINT. UNLESS SPECIFIED DIMENSIONS IN PARENTHESES ON DRAWING ARE TO APPLY TO ALL ANGLES.	DR 2-9-93 TA BRINKMAN
FINISH: TIN PLATE 0.00254L [0.00100] MIN THK PER MIL-T-10727	CHK 2-9-93 DA PATTERSON
MATERIAL: COPPER PER ASTM B-152 ANNEALED	APPR 2-9-93 DE MILLER
	APPR 2-9-93 JL WICKLEY
	APPR 2-9-93 JL WICKLEY

AMP	AMP Incorporated Harrisburg, PA 17105-3608
TERMINAL, RING TONGUE, BUDGET	NAME
SIZE: 00779	CAGE CODE: 31113
SCALE: 10:1	DRAWING NO: 31113
	SHEET: 1 OF 1