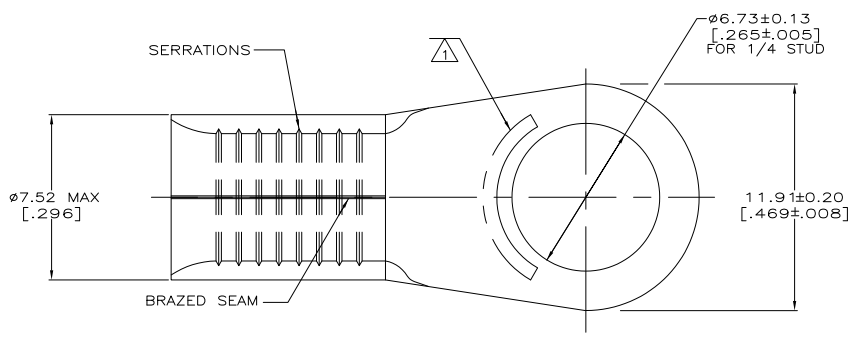


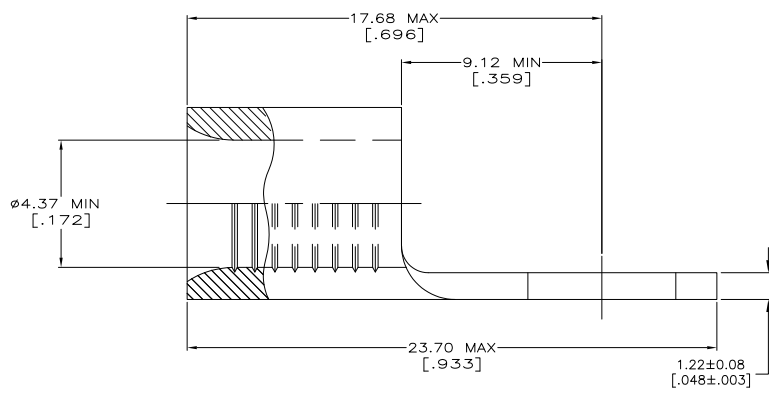
THIS DRAWING IS UNPUBLISHED. RELEASED FOR PUBLICATION. ALL RIGHTS RESERVED.

LOC	DIST	REVISIONS			
P	LR	DESCRIPTION	DATE	BY	APPD
G	14	T2	REVISED PER ECO-11-004587	11MAR11	RK HMR

AMP WIRE RANGE
8 AWG SOLID OR STRANDED



- 1 STAMP AMP 8* APPROX AS SHOWN
- 2 UL LISTED E13288, 8 AWG STRANDED
- 3 CSA CERTIFIED LR7189, 8 AWG SOLID OR STRANDED
- 4 MILITARY MS20659-141 CLASS 2
- 5 SUPERSEDED BY 8-33461-1
- 6 TIN PLATE 0.00254 [.000100] MIN THK PER ASTM B545
- 7 TIN-LEAD (60-40) PLATE 0.00254 [.000100] MIN THK PER SAE-AMS-P-81728
- 9 PRELIMINARY - NOT FOR PRODUCTION



OBSOLETE	QTY	PACKAGE TYPE	PART NO.
25	LOOSE PIECE, BAG	8-33461-5	
50	LOOSE PIECE, BOX	8-33461-2	
100	LOOSE PIECE, BOX	8-33461-1	
1000	33461 TAPE MOUNTED ON 30.48[1.200] CENTERS	2-33461-3	
1500	33461 TAPE MOUNTED ON 15.24[.600] CENTERS	2-33461-2	
---	50	LOOSE PIECE	33461-1
---	100	LOOSE PIECE	33461

AMP INCORPORATED CUSTOMER SERVICE SYSTEMS		MAX. RECOMMENDED OPERATING TEMPERATURE: 170°C MAX
FOR ADDITIONAL PRODUCT INFORMATION OR COPIES OF DRAWINGS AND TECHNICAL DOCUMENTS	PRODUCT INFORMATION CENTER 1-800-522-8752	VOLTAGE RATING: N/A
FOR APPLICATION	TOOLING ASSISTANCE CENTER 1-800-722-1111	CIRCULAR MIL AREA: 6.94-10.5mm ² [13,100-30,800] SOLID OR STRANDED
FOR ORDER ENTRY	1-800-528-5142	THIS DRAWING IS A CONTROLLED DOCUMENT FOR AND INFORMATION IS SUBJECT TO CHANGE. SHOULD BE CONTACTED FOR THE LATEST REVISION.

THIS DRAWING IS A CONTROLLED DOCUMENT.		DATE: 3-24-93
DRAWN BY: J.A. BRINKMAN		DATE: 3-24-93
CHECKED BY: J.A. PATTERSON		DATE: 3-24-93
APPROVED BY: J.L. MECKLEY		DATE: 3-24-93
MATERIAL: COPPER PER ASTM B-152 ANNEALED		FINISH: -
APPROVALS:		APPROVALS:
FINISH:		FINISH:
QTY:		QTY:
PACKAGE TYPE:		PACKAGE TYPE:
PART NO.:		PART NO.:
CUSTOMER DRAWING		SCALE: 8:1 SHEET: 1 of 1 REV: T2