

4

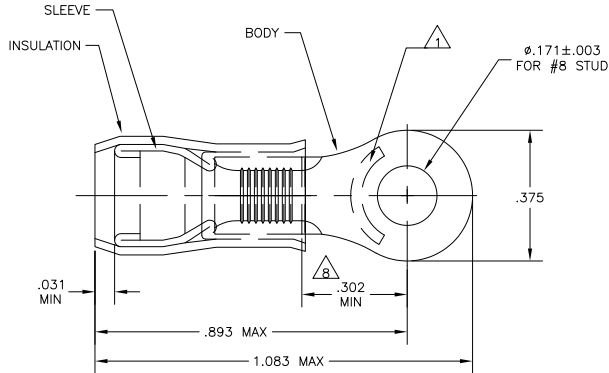
3

2

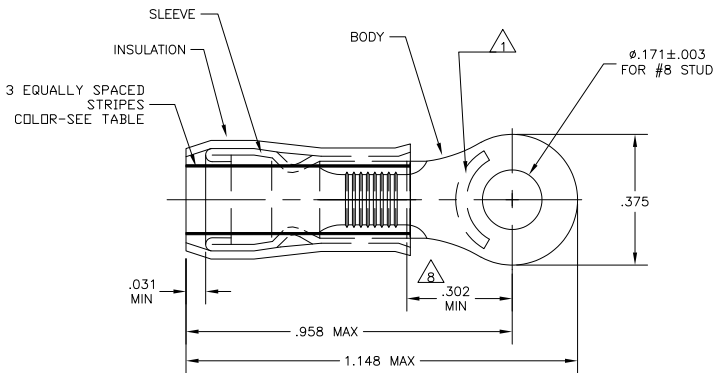
1

THIS DRAWING IS UNPUBLISHED. RELEASED FOR PUBLICATION. ALL RIGHTS RESERVED.

LOC	DIST	REVISIONS			
P	LTR	DESCRIPTION	DATE	BY	APPD
G	14	TG	REVISED PER ECO-11-004587	11MAR11	RK HMR



STYLE A



STYLE B  
INSULATION RESTRICTING

- 1 STAMP "AMP - SEE TABLE" APPROX AS SHOWN
- 2 WIRE INSULATION DIA: SEE TABLE
- 3 TONGUE MATERIAL THK: .040 ± .002
- 4 BODY: TIN PLATE .000100 MIN EXT THK PER ASTM B545
- 5 SLEEVE: TIN PLATE .000100 MIN EXT THK PER ASTM B545
- 6 SLEEVE: NICKEL PLATE PER QQ-N-290
- 7 BODY & SLEEVE - CU PER ASTM B152 INSULATION - NYLON PER ASTM D4066 COLOR - YELLOW
- 8 APPLIES FROM EDGE OF METAL WIRE BARREL TO CENTER OF STUD HOLE.
- 9 MEETS MS25036-156, CLASS 1 & 2
- 10 MEETS MS25036-156, CLASS 2
- 11 MEETS M7928/1-57, CLASS 1 & 2
- 12 MEETS M7928/1-64, CLASS 1 & 2
- 13 SUPERSEDED BY 2-320568-3

QTY	PACKAGE TYPE	STAMPING	WIRE DIA	WIRE SIZE	STRIPES	COLOR	STYLE	BODY FINISH	SLEEVE FINISH	PART NO
50	LOOSE-PIECE-BOX	10	.115-.200	10	BROWN	B				9-320568-2
50	LOOSE PIECE, BOX	12	.095-.200	12	YELLOW	B				8-320568-2
50	LOOSE PIECE, BOX	12-10	.150-.230	12-10	--	A				7-320568-2
500	ON TAPE, LG. BOX	12-10	.150-.230	12-10	--	A				2-320568-6
---	LOOSE PIECE	10	.115-.200	10	BROWN	B	4			2-320568-3
---	LOOSE PIECE	12	.095-.200	12	YELLOW	B				2-320568-2
2500	ON TAPE & REEL	12-10	.150-.230	12-10	--	A				2-320568-1
---	LOOSE PIECE	12-10	.150-.230	12-10	--	A				320568

CUSTOMER SERVICE SYSTEMS	
FOR ADDITIONAL PRODUCT INFORMATION OR COPIES OF DRAWINGS AND TECHNICAL DOCUMENTS	PRODUCT INFORMATION CENTER 1-800-522-6752
FOR APPLICATION TOOLING INFORMATION	TOOLING ASSISTANCE CENTER 1-800-722-1111
FOR ORDER ENTRY	1-800-526-5142

MAX RECOMMENDED OPERATING TEMPERATURE: 105°C MAX	VOLTAGE RATING: 300 VOLT MAX	CIRCULAR MIL AREA: 2.62-6.64mm <sup>2</sup> (5,180-13,100) STRANDED OR SOLID	THIS DRAWING IS A CONTROLLED DOCUMENT.	DR: J.R. RUTH 170009 CHK: T. MICHELJUTTI 170009 APPD: T. MICHELJUTTI 170009	TE Connectivity
DIMENSIONS: INCHES		TOLERANCES UNLESS OTHERWISE SPECIFIED: 0 PLC ± .005 1 PLC ± .004 2 PLC ± .003 3 PLC ± .002 4 PLC ± .001 ANGLES ± .005	MATERIAL: -	FINISH: -	TERMINAL, RING TONGUE, PIDG WIRE SIZE: 12-10 AWG
APPROVALS: SIZE: A2 CASE CODE: 00779 DRAWING NO: C-320568			RESTRICTED TO: -		CUSTOMER DRAWING
SCALE: 5:1			SHEET: 1 of 1		REV: T6