

4

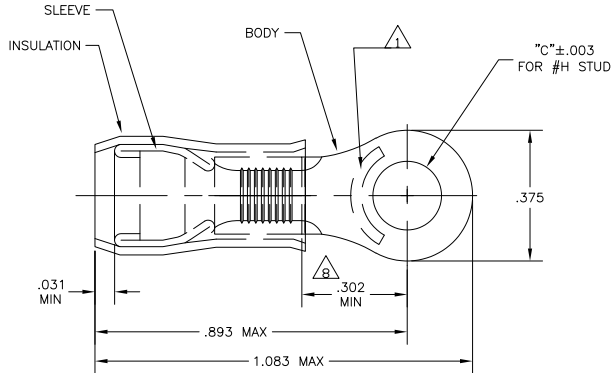
3

2

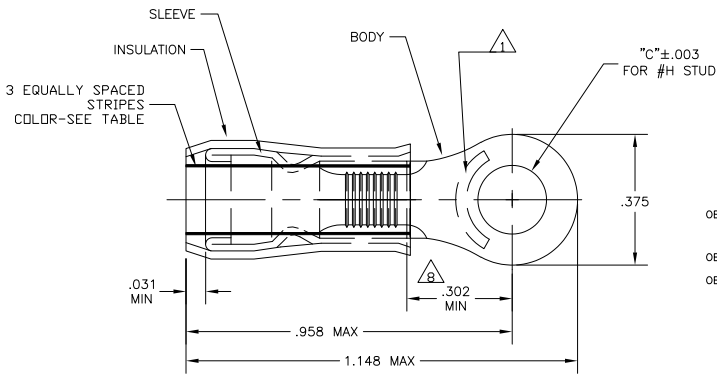
1

THIS DRAWING IS UNPUBLISHED. RELEASED FOR PUBLICATION. ALL RIGHTS RESERVED.

LOC	DIST	REV	DESCRIPTION	DATE	BY	APPD
G	14	P	LTR			
		22	REVISED PER ECO-11-004587	11MAR11	RK	HMR



STYLE A



STYLE B
INSULATION RESTRICTING

- △ STAMP "AMP - SEE TABLE" APPROX AS SHOWN
- 2 WIRE INSULATION DIA: SEE TABLE
- 3 TONGUE MATERIAL THK: .039±.002
- △ 4 BODY: TIN PLATE .000100 MIN EXT THK PER ASTM B545
- △ 5 SLEEVE: TIN PLATE .000100 MIN EXT THK PER ASTM B545
- △ 6 SLEEVE: NICKEL PLATE PER QQ-N-290
- △ BODY & SLEEVE- CU PER ASTM B152 INSULATION - NYLON PER ASTM D4066 COLOR - YELLOW
- △ 8 APPLIES FROM EDGE OF METAL WIRE BARREL TO CENTER OF STUD HOLE.
- △ 9 MEETS MS25036-112, CLASS 1 & 2
- △ 10 MEETS MS25036-112, CLASS 2
- △ 11 MEETS M7928/1-58, CLASS 1 & 2
- △ 12 MEETS M7928/1-65, CLASS 1 & 2
- △ 13 MEETS M7928/1-56, CLASS 1 & 2
- △ 14 MEETS M7928/1-63, CLASS 1 & 2
- △ 15 SUPERSEDED BY 2-36161-5

QTY	PACKAGE TYPE	"H"	"C"	STAMPING	WIRE DIA	WIRE SIZE	STRIPES	COLOR	STYLE	BODY FINISH	SLEEVE FINISH	PART NO
50	LOOSE PIECE, BOX	#10	.197	12	.095-.200	12	---	YELLOW	B		△ 6	9-36161-2
50	LOOSE PIECE, BOX	#10	.197	12-10	.150-.230	12-10	---	---	A		△ 5	8-36161-2
500	ON TAPE, LG-BOX	#10	.197	12-10	.150-.230	12-10	---	---	A		△ 5	3-36161-1
2500	ON TAPE & REEL	#6	.145	10	.119-.200	10	---	BROWN	B		△ 6	3-36161-0
2500	ON TAPE & REEL	#6	.145	12	.095-.200	12	---	YELLOW	B		△ 6	2-36161-9
2500	ON TAPE & REEL	#10	.197	12	.119-.200	12	---	BROWN	B		△ 6	2-36161-8
---	LOOSE PIECE	#6	.145	10	.119-.200	10	---	BROWN	B		△ 6	2-36161-6
---	LOOSE PIECE	#6	.145	12	.095-.200	12	---	YELLOW	B		△ 6	2-36161-5
---	LOOSE PIECE	#10	.197	10	.119-.200	10	---	BROWN	B	△ 4	△ 6	2-36161-4
---	LOOSE PIECE	#10	.197	12	.095-.200	12	---	YELLOW	B		△ 6	2-36161-3
2500	ON TAPE & REEL	#10	.197	12-10	.150-.230	12-10	---	---	A		△ 6	2-36161-2
---	LOOSE PIECE	#10	.197	12-10	.150-.230	12-10	---	---	A		△ 5	36161

CUSTOMER SERVICE SYSTEMS FOR ADDITIONAL PRODUCT INFORMATION OR COPIES OF DRAWINGS AND TECHNICAL DOCUMENTS: PRODUCT INFORMATION CENTER 1-800-522-6752 FOR APPLICATION TOOLING ASSISTANCE CENTER: TOOLING ASSISTANCE CENTER 1-800-722-1111 FOR ORDER ENTRY: 1-800-526-5142		MAX RECOMMENDED OPERATING TEMPERATURE: 105°C MAX VOLTAGE RATING: 300 VOLT MAX CIRCULAR MIL AREA: 2.62-6.64mm ² [5,180-13,100] STRANDED OR SOLID	THIS DRAWING IS A CONTROLLED DOCUMENT. DIMENSIONS: INCHES TOLERANCES UNLESS OTHERWISE SPECIFIED: 0 PLC ± .005 1 PLC ± .004 2 PLC ± .003 3 PLC ± .002 4 PLC ± .001 ANGLES ± .5° FINISH: -	J.R. RUTH 1700099 CHK. T. MICHELJUTTI 1700099 APD. T. MICHELJUTTI 1700099 NAME: T. MICHELJUTTI PRODUCT SPEC: - APPLICATION SPEC: - WEIGHT: -	TE TE Connectivity TERMINAL, RING TONGUE, PIDG WIRE SIZE: 12-10 AWG SIZE: A2 CASE CODE: 00779 DRAWING NO: C-36161 CUSTOMER DRAWING SCALE: 5:1 SHEET 1 of 1 REV 72
--	--	--	---	--	--