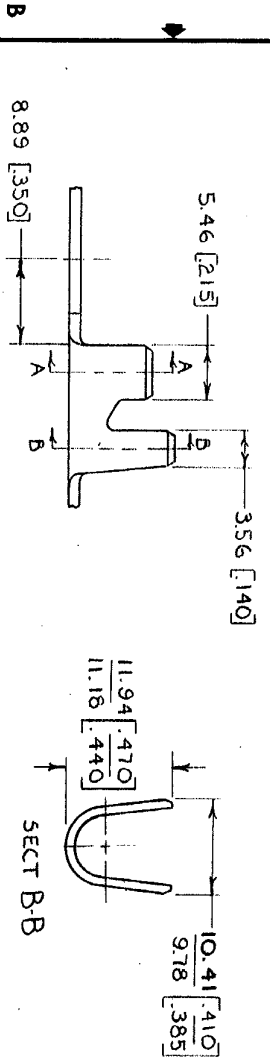
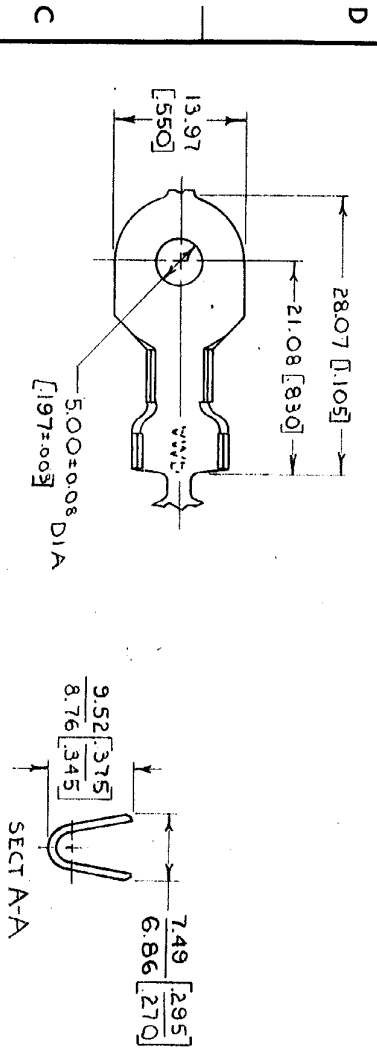


© COPYRIGHT 1968 BY AMP INCORPORATED, HARRISBURG, PA.
 ALL INTERNATIONAL RIGHTS RESERVED. AMP INCORPORATED PRODUCTS
 COVERED BY U. S. AND FOREIGN PATENTS AND/OR PATENTS PENDING.

REVISIONS		DATE	APPROVED
1	LOC AF 01ST 50		
2	REDRAWN & REVISED A-3743	4/3/78	[Signature]
3	085-2 AF1608	5/2/86	SS/RS



1. CONTINUOUS STRIP ON REELS
 2. DIMENSIONS IN BRACKETS
 ARE IN INCHES.



#10	5.0-15.0 mm ²	5.59-8.00	INSULATION RANGE	FINISH	TIN	MATERIAL	102 [040] BRASS	61352-1	PART NO
WIRE RANGE	5.0-15.0 mm ²	INSULATION RANGE	5.59-8.00 [220-315]	FINISH	TIN	MATERIAL	102 [040] BRASS	61352-1	PART NO
SEE TABLE	SEE TABLE	CONTRACT NO	9-8-78	OTHER APPD	DRG APPD	CHKD	9-8-78	NAME	RING
SEE TABLE	SEE TABLE	UNLESS OTHERWISE SPECIFIED DIMENSIONS ARE IN INCHES TO 3 DECIMALS ANGLES ± 1°	9-8-78	OTHER APPD	DRG APPD	CHKD	9-8-78	NAME	RING
SEE TABLE	SEE TABLE	MATERIAL	9-8-78	OTHER APPD	DRG APPD	CHKD	9-8-78	NAME	RING
SEE TABLE	SEE TABLE	FINISH	9-8-78	OTHER APPD	DRG APPD	CHKD	9-8-78	NAME	RING
SEE TABLE	SEE TABLE	SIZE	9-8-78	OTHER APPD	DRG APPD	CHKD	9-8-78	NAME	RING
SEE TABLE	SEE TABLE	SCALE	9-8-78	OTHER APPD	DRG APPD	CHKD	9-8-78	NAME	RING

CUSTOMER DRAWING