

4

3

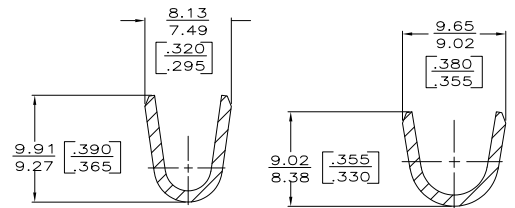
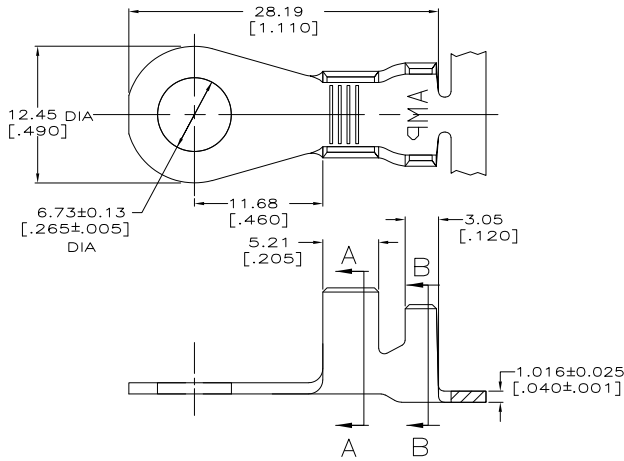
2

1

THIS DRAWING IS UNPUBLISHED. RELEASED FOR PUBLICATION
 © COPYRIGHT BY TYCO ELECTRONICS CORPORATION. ALL INTERNATIONAL RIGHTS RESERVED.

LOC	DIST	REVISIONS			
P	LTR	DESCRIPTION	DATE	BY	APPD
M		REVISED PER ECR-10-006099	08JUL10	HMR	PD

- 1 CONTINUOUS STRIP ON REEL.
 2 0.002032 [.000080] MIN TIN PL PER MIL-T-10727 OVER
 0.001270 [.000050] MIN NICKEL PL PER QQ-N-290.
 3 REELED OPPOSITE DIRECTION OF -1 P/N.
 4 REELED WITH INTERLEAVING PAPER.
 5 PRELIMINARY - NOT FOR PRODUCTION.



SECTION A-A

SECTION B-B

4 3	2			5	61868-7
3	2			5	61868-6
4 3	TIN			5	61868-5
3	TIN			5	61868-4
OBSELETE	2	3.68-7.37 [.145-.290] DIA	5.0-15.0mm ² [10-6] AWG		61868-2
	TIN				61868-1

F OR O	8.64 [.340]	6.73 [.265]	F	7.11 [.280]	4.70[.185]	15.0mm*[8]
					4.14[.163]	8.0mm*[8]
					3.78[.149]	5.0mm*[10]
TYPE	WIDTH	STRIP LENGTH ±0.38 [±.015]	TYPE	WIDTH	HEIGHT	WIRE
INSUL BARREL CRIMP			WIRE BARREL CRIMP			

FINISH		INSULATION RANGE	WIRE RANGE	PART NO
THIS DRAWING IS A CONTROLLED DOCUMENT.				
DIMENSIONS: INCHES	FRANGES UNLESS OTHERWISE SPECIFIED.			
0 PLC ±	1 PLC ±			
2 PLC ±	3 PLC ±			
4 PLC ±	ANGLES ±			
MATERIAL 082 BRASS	FINISH SEE TABLE			
APPROVED: P. FORTNEY 7/25/91		Tyco Electronics Corporation Harrisburg, PA 17105-3608		
CHK: J.R. RUTH 7/25/91		RING		
D. DECKER		SIZE CASE CODE DRAWING NO		
PRODUCT SPEC		A2 00779 C-61868		
APPLICATION SPEC		RESTRICTED TO		
WEIGHT		CUSTOMER DRAWING		
		SCALE 4:1 SHEET 1 of 1 REV M		

1471-9 (1/08)

61868

A