

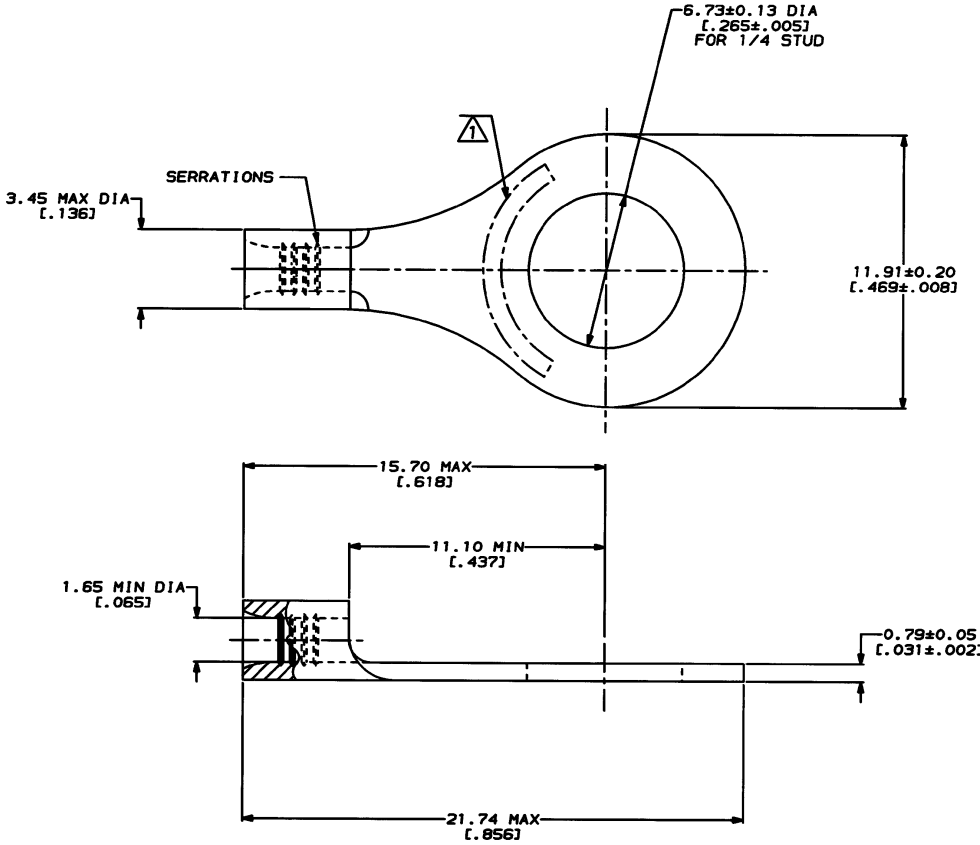
THIS DRAWING IS UNPUBLISHED. RELEASED FOR PUBLICATION, 19...  
 COPYRIGHT 19... BY AMP INCORPORATED. ALL INTERNATIONAL RIGHTS RESERVED.

LAG	DATE	REVISIONS	DATE	APPD
G	14	D	REVISED PER 0720-0230-93	2/25/94 DAP

**METRIC**  
 DIMENSIONS LISTED IN mm [ INCHES ]

<b>AMP</b> WIRE RANGE	E13288 Listed
22-16 AWG STRANDED	22-16 AWG STRANDED
LR7189 Certified	MILITARY P/N AND CLASS
NOT CERTIFIED	NOT APPLICABLE

STAMP AMP 22-18 APPROX AS SHOWN  
 22-16 TERMINALS ARE STAMPED 22-18 IN  
 ACCORDANCE WITH MILITARY SPECIFICATION  
 MIL-T-7928, COMMERCIAL WIRE RANGE IS 22-16



**AMP INCORPORATED  
 CUSTOMER SERVICE SYSTEMS**

FOR ADDITIONAL PRODUCT INFORMATION OR COPIES OF DRAWINGS AND TECHNICAL DOCUMENTS	PRODUCT INFORMATION CENTER 1-800-522-6752
FOR APPLICATION TOOLING INFORMATION	TOOLING ASSISTANCE CENTER 1-800-722-1111
FOR ORDER ENTRY	1-800-526-5142

MAX RECOMMENDED OPERATING  
TEMPERATURE:  
170°C MAX

VOLTAGE RATING:  
NOT APPLICABLE

WIRE CROSS SECTIONAL AREA RANGE:  
0.26-1.65mm<sup>2</sup> (S09-3,260) CIR MILS  
STRANDED

THIS DRAWING IS A FORWARDED DRAWING AND  
 THE ORIGINAL AND THE ORIGINAL ORGANIZATION  
 SHOULD BE CONTACTED FOR THE LATEST REVISION.

DO NOT SCALE PRINT.  
 UNLESS SPECIFIED  
 DIMENSIONS IN mm - DIMENSIONS -  
 TOLERANCES ON :  
 2 PLC DEC ± -  
 3 PLC DEC ± -  
 ANGLES ± -

MATERIAL:  
COPPER PER  
ASTM B-152  
ANNEALED

FINISH:  
TIN PLATE  
0.00254(.000100) MIN  
THK PER MIL-T-10727

31172  
PART NO

**AMP** AMP Incorporated  
 Harrisburg, PA 17105-3608

NAME:  
**TERMINAL, RING TONGUE,  
 BUDGET**

DR 2-3-93 TA BRINMAN	CHK 2-3-93 DA PATTERSON	NAME
APPD 2-3-93 DE MILLER	APPD 2-3-93 J. HECKLEY	PRODUCT SPEC
APPLICATION SPEC	SIZE C	CASE CODE 00779
WEIGHT	SCALE 8:1	DRAWING NO C-31172
		SHEET 1 OF 1